

Il Barbiere di Siviglia

Sinfonia

Flauto in Sol

Gioacchino Rossini

Andante maestoso

Musical score for Flute in Sol, Andante maestoso section. The score consists of ten staves of music. The key signature is three sharps (F#, C#, G#) and the time signature is common time (C). The dynamics range from *ff* (fortissimo) to *pp* (pianissimo). The music features a mix of eighth and sixteenth notes, with some rests and slurs. The first staff starts with *ff*, followed by *pp*, *p*, *ff*, and *pp*. The second staff has *p*. The third staff has *p*. The fourth staff has *ff* and *p*. The fifth staff has *f*. The sixth staff has *f* and *pp*. The seventh staff has *f* and *pp*.

Allegro vivo

Musical score for Flute in Sol, Allegro vivo section. The score consists of six staves of music. The key signature is three sharps (F#, C#, G#) and the time signature is common time (C). The dynamics range from *ff* (fortissimo) to *p* (piano). The music features a mix of eighth and sixteenth notes, with some rests and slurs. The eighth staff starts with *ff*, followed by *p*. The ninth staff has *f*. The tenth staff has *p*. The eleventh staff has *f*. The twelfth staff has *p*.

Il Barbiere di Siviglia

2

48 *ff*

53

58

63 *f*

68

73 *f p*

77 *f p sf sf*

82 *sf pp p*

92

99 *p*

105

110 *p*

116

121 *pp*

126 *mf*

131 *f* cresc sempre...

136 *ff* 3

141 3

146 *pp*

153

158

163 *f* *p*

168

173 *p*

178

184

190 *p*

196 *p*

Il Barbiere di Siviglia

4

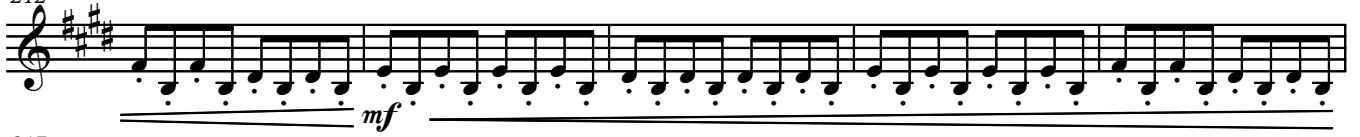
202



207



212



217



222



228



233



238



244



249



255



261

