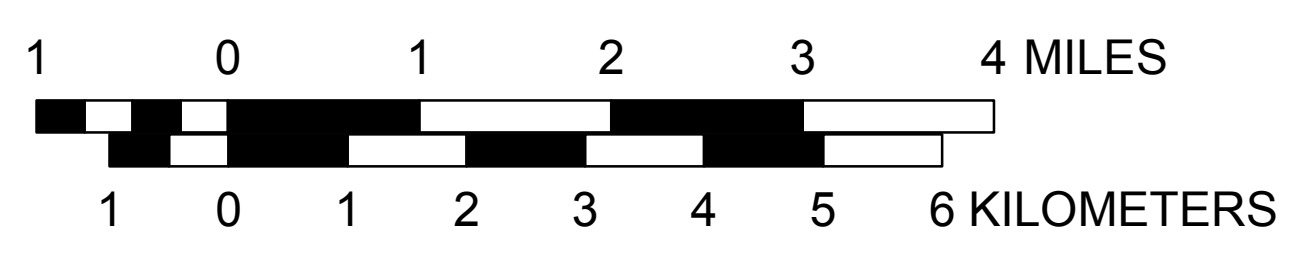
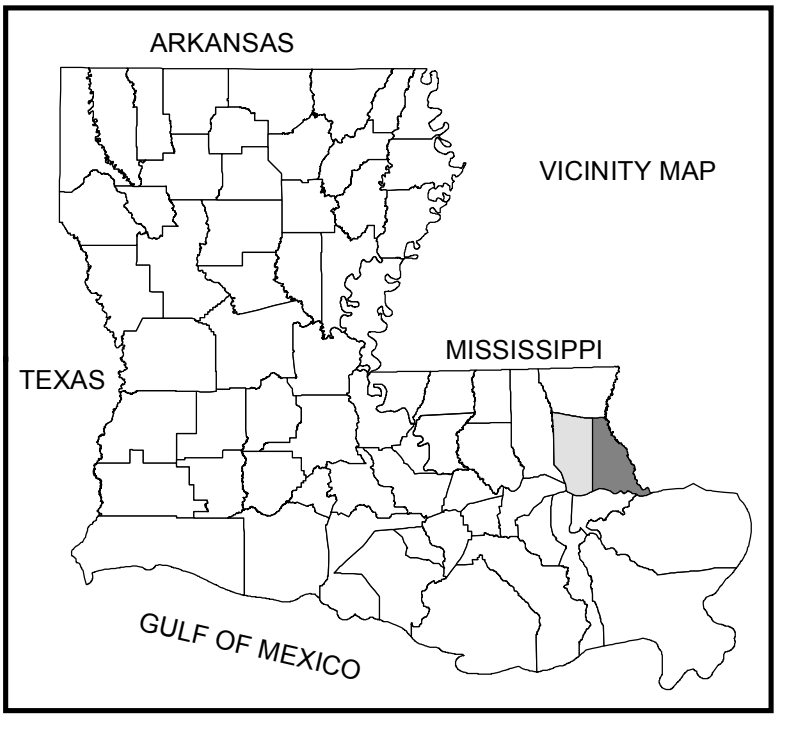
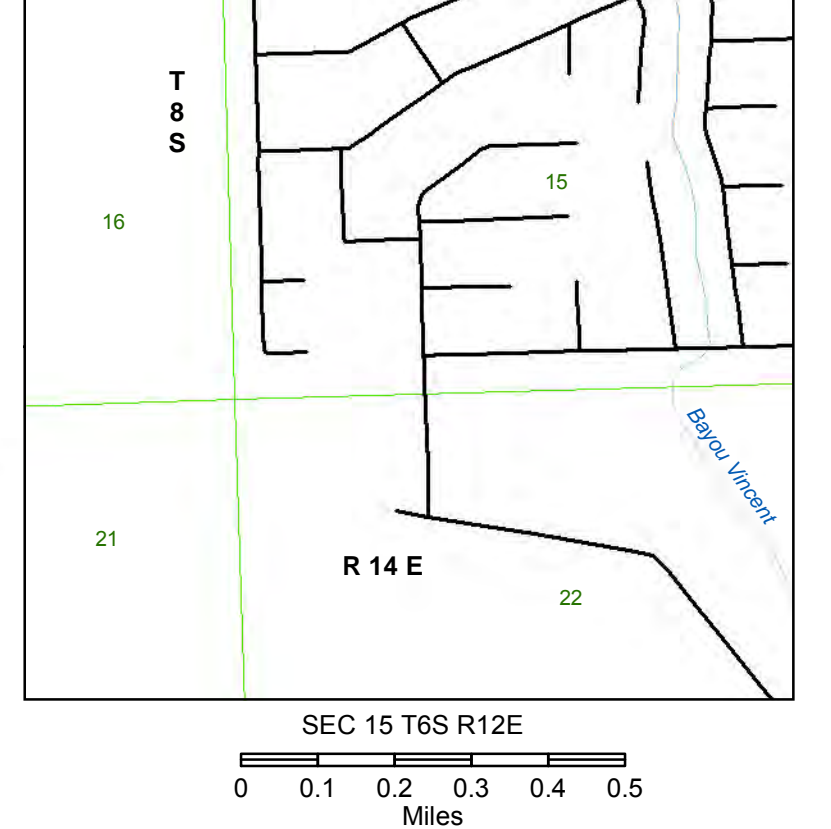
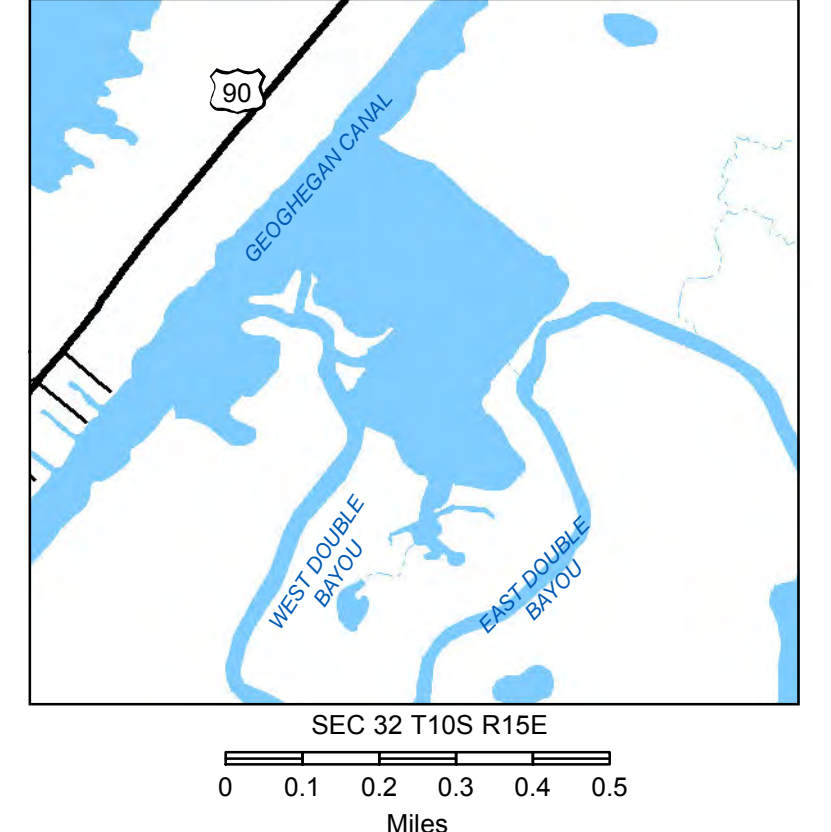
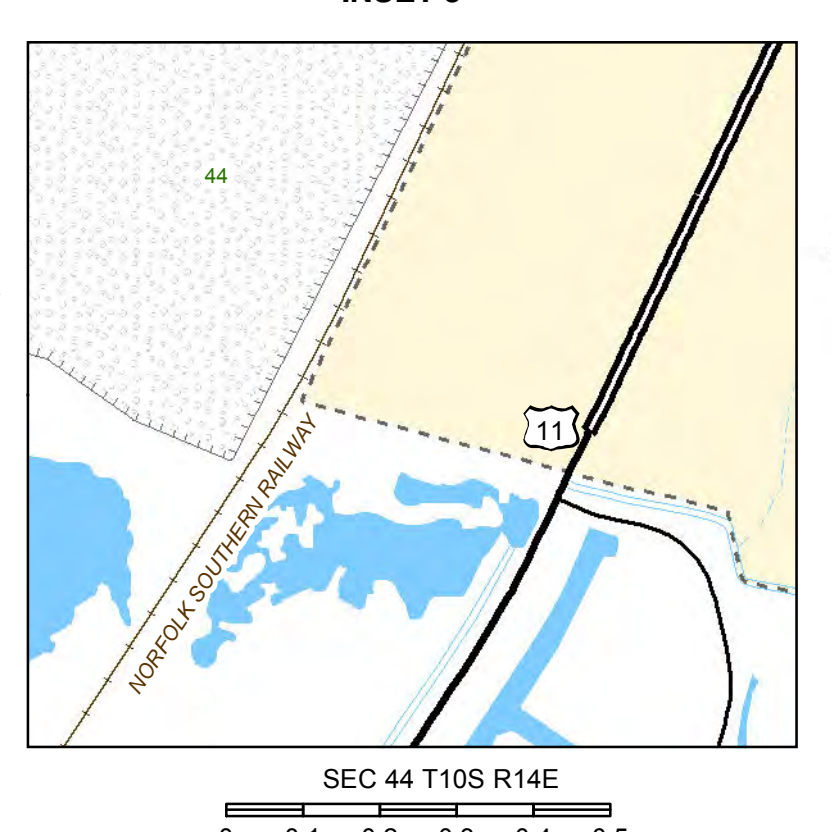
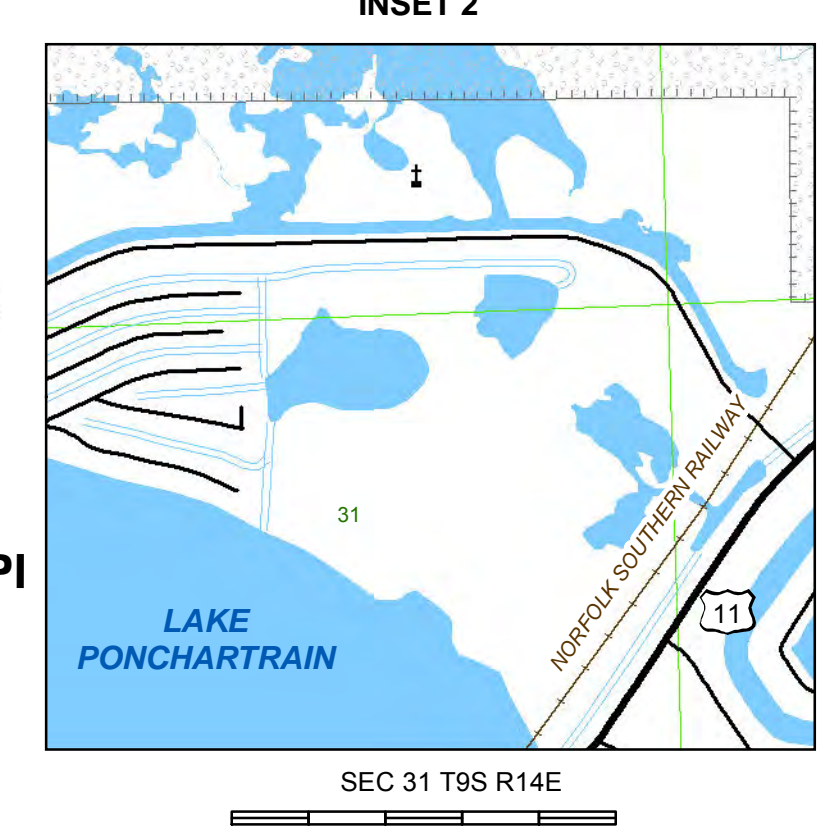
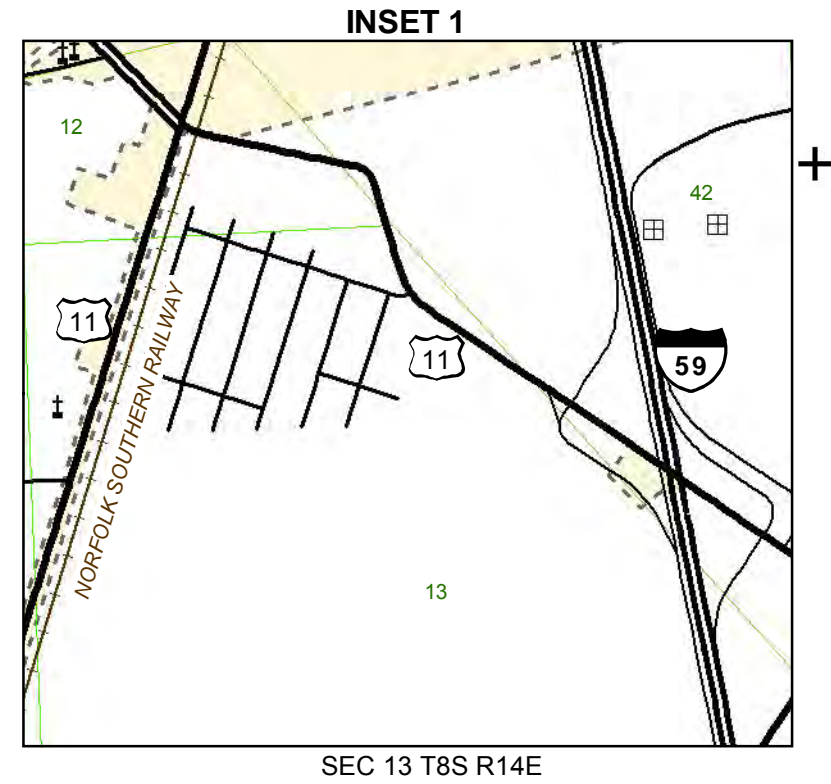
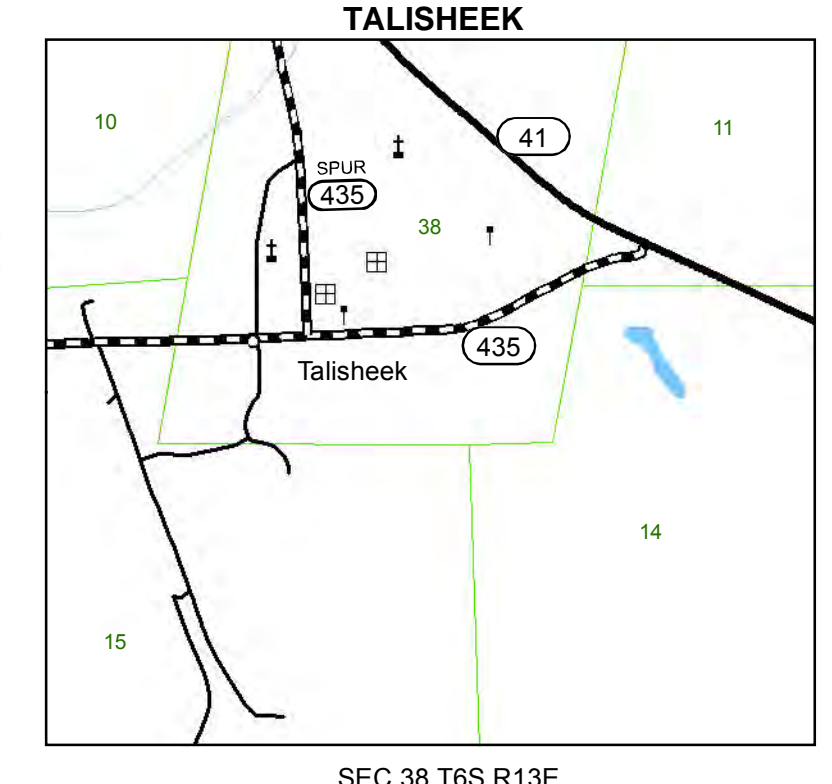


- INTERSTATE HIGHWAY SYSTEM
- U.S. HIGHWAY SYSTEM
- STATE HIGHWAY SYSTEM
- DIVIDED HIGHWAY WITH CONTROL OF ACCESS
- DIVIDED HIGHWAY WITH FRONTAGE ROADS
- MULTI-LANE UNDIVIDED HIGHWAY
- MULTI-LANE DIVIDED HIGHWAY
- PAVED ROAD
- BITUMINOUS ROAD
- GRAVEL ROAD
- PUBLIC ROAD
- PROPOSED HIGHWAY
- HIGHWAY BRIDGE (MORE THAN 20' SPAN)
- HIGHWAY BRIDGES CLOSELY SPACED
- HIGHWAY DRAWBRIDGE
- HIGHWAY TUNNEL
- OVERHEAD STRUCTURE
- PUBLIC FERRY (FF - FREE, TP - TOLL)
- STATE BOUNDARY
- PARISH BOUNDARY
- INCORPORATED AREA BOUNDARY
- UNINCORPORATED AREA BOUNDARY
- TOWNSHIP-RANGE LINE
- SECTION LINE
- MATCH LINE
- RAILROAD
- RAILROAD STATION (HISTORICAL)
- RIVER, LAKE, RESERVOIR, OR POND
- INTERMITTENT STREAM
- STREAM
- CANAL
- HEAD OF NAVIGATION
- NAVIGABLE WATERWAY
- OPERATED SHIP AND BARGE LINES
- DAM ON WATERWAY
- LOCK ON WATERWAY
- LOCK AND DAM ON WATERWAY
- CONTROL STRUCTURE ON WATERWAY
- DOCK, PIER, OR LANDING ON WATERWAY
- LEVEE OR DIKE
- LEVEE OR DIKE WITH ROAD
- NATIONAL FOREST
- WILDLIFE AREAS
- CITY LIMITS
- PARISH SEAT
- CITY, TOWN, VILLAGE, OR COMMUNITY
- AIRPORT - LIMITED FACILITY
- AIRPORT - MAJOR FACILITY
- AIRWAY LIGHT BEACON
- AMTRAK TERMINAL
- AMUSEMENT FACILITY
- ANIMAL SHELTER
- ANTEBELLUM HOME
- ARMORY OR NATIONAL GUARD UNIT
- ASTRONOMICAL OBSERVATORY
- AUTO SALVAGE YARD
- BALLFIELD
- BUS TERMINAL
- CAMP SPONSORED BY AN ORGANIZATION
- CEMETERY
- CHURCH
- CHURCH AND SCHOOL
- CHURCH W/ CEMETERY ADJACENT
- COAST GUARD STATION
- COMMUNICATIONS TOWER
- COMMUNITY HALL
- CORRECTIONAL FACILITY
- COURTHOUSE
- DOTTED FACILITY - CONSTRUCTION UNIT
- DOTTED FACILITY - DISTRICT HEADQUARTERS
- DOTTED FACILITY - MAIN HEADQUARTERS
- DOTTED FACILITY - MAINTENANCE UNIT
- DOTTED FACILITY - PROJECT ENGINEER OFFICE
- DOTTED FACILITY - STORAGE SITE
- DOTTED FACILITY - SUB-DISTRICT HEADQUARTERS
- FAIRGROUND OR RACE TRACK
- FERRY BOAT TERMINAL BUILDING
- FIRE STATION
- FISH HATCHERY
- GARBAGE DUMP
- GOLF COURSE
- GRAIN ELEVATOR
- GRAVEL, SAND, CLAY OR DIRT PIT
- GREAT RIVER ROAD DESIGNATION
- HELIPORT
- HOSPITAL
- INDUSTRIAL FACILITY
- LANDING STRIP
- LIGHTHOUSE
- LOCAL HISTORIC SITE
- MILITARY AIRFIELD
- MILITARY FACILITY
- MUNICIPAL BUILDING
- MUSEUM - NON-STATE OWNED
- MUSEUM - STATE OWNED
- NASA FACILITY
- NATIONAL PARK
- NATIONAL HISTORIC PARK AND PRESERVE
- NURSING HOME
- OBSERVATION TOWER
- PARISH HEALTH UNIT
- PARK
- POLICE STATION
- PORT - DEEP DRAFT
- PORT - EMERGING
- PORT - SHALLOW DRAFT
- POST OFFICE
- POWER PLANT
- PUBLIC BEACH
- PUBLIC BOAT LAUNCH
- PUBLIC FERRY DOCK
- PUBLIC LIBRARY
- PUBLIC RECREATION AREA
- RAILROAD FREIGHT FACILITY
- RANGER STATION
- RESEARCH STATION
- INTERSTATE REST AREA
- RODEO FACILITY
- SCHOOL SITE
- SCIENCE OR UNIVERSITY
- SCRAP YARD
- SEAPLANE FACILITY
- SEWAGE TREATMENT FACILITY
- STATE HISTORIC SITE
- STATE PARK
- STATE PRESERVATION AREA
- STATE WELCOME CENTER
- TOURIST INFORMATION CENTER
- WATER SUPPLY SYSTEM
- WILDLIFE STATION
- WEIGH STATION



**ST. TAMMANY PARISH**  
 EAST SECTION  
 LOUISIANA  
 MAP UPDATED FEBRUARY 2012  
 CENSUS 2010 POPULATION 233,740

PREPARED BY THE  
 DEPARTMENT OF TRANSPORTATION AND DEVELOPMENT  
 OFFICE OF MULTIMODAL PLANNING

IN COOPERATION WITH THE  
 U.S. DEPARTMENT OF TRANSPORTATION  
 FEDERAL HIGHWAY ADMINISTRATION

ST. TAMMANY PARISH 52  
 SHEET 2 OF 2

SHEET 2 OF 2

THIS MAP HAS BEEN PREPARED BY THE  
 LOUISIANA DEPARTMENT OF TRANSPORTATION AND  
 DEVELOPMENT  
 OFFICE OF MULTIMODAL PLANNING  
 AND DEVELOPMENT  
 IN COOPERATION WITH THE  
 U.S. DEPARTMENT OF TRANSPORTATION  
 FEDERAL HIGHWAY ADMINISTRATION

PRINTED COPIES OF THIS MAP ARE AVAILABLE FOR  
 PUBLIC USE AT A NOMINAL COST

PLEASE SEE THE FOLLOWING CONTACT INFORMATION  
 DEPARTMENT OF TRANSPORTATION AND DEVELOPMENT  
 GENERAL FILES - MAP SALES  
 P.O. BOX 9450  
 BATON ROUGE, LA 70804-0945  
 (504) 386-1107

DATA ON THIS MAP IS INTENDED FOR INTERNAL PLANNING  
 USE ONLY. ALTHOUGH THE DATA HAS BEEN SUBJECT TO  
 MANY RIGOROUS TESTS - ALL WITH EXCELLENT RESULTS - NO  
 WARRANTY IS EXPRESSED OR IMPLIED. REGARDLESS AS TO  
 THE ACCURACY OF THE DATA, NOR SHALL THE FACT OF  
 DISTRIBUTION CONSTITUTE ANY SUCH WARRANTY. SUCH  
 ACCURACY AS IS IMPLIED IS SUBJECT TO THE RIGHTS,  
 AND ASSUMES NO RESPONSIBILITY TO DISTRIBUTE FUTURE  
 MODIFICATIONS OR CORRECTIONS THAT MAY BE MADE.

PROJECTION: NAD 83 UTM Zone 18N  
 Spheroid: Majorana  
 False Easting: 500000.000000  
 False Northing: 0.000000  
 Central Meridian: -90.000000  
 Scale Factor: 0.999900  
 Latitude of Origin: 0.000000  
 Units: Meter  
 HORIZONTAL DATUM: NORTH AMERICAN DATUM OF 1983

\\ns8501ms0185Common855Share\Map\StTammany\St\_Tammany\_East.mxd