

Mohawk Had Best Year In Riders And Air Miles

UTICA — Last year was the most successful in the 18-year history of Mohawk Airlines Inc., Robert E. Peach, president, announced.

During 1962, the airline carried more than one million passengers, an increase of more than 31 per cent over 1961 and flew more than 10 million miles, an increase of over 22 per cent.

Mohawk flew more than 206 million revenue passenger miles, which also was an increase of more than 31 per cent.

Termed Milestone

"We are especially pleased to have shown such progress in 1962, for the year proved to be a milestone in Mohawk history," Peach said. "It was the year that Mohawk sold the last of its DC-3's the workhorse of earlier days, and ordered its planes of the future, four BAC One-Eleven, twin-engine jets.

"We anticipate that our growth will continue," Peach added, "and that we will carry more than 1.5 million passengers in 1963, our first full year of jet operation. This will be an increase of 50 per cent over last year."

Carried 1,006,331

In 1962 Mohawk carried 1,006,331 passengers 10,581,637 miles in scheduled service between the 53 cities it serves in ten states. An additional 20,145 were carried on charter flights.

The year before, when Mohawk became the largest of the nation's 13 regional airlines, it carried 767,084 passengers a distance of 8,650,417 miles.

The airline also flew 21,103,048 ton miles in 1962, carrying mail, freight and express on passenger and all-cargo flights. This was an increase of more than 31 per cent over 1961's 16,061,082 ton miles.

Mohawk's maintenance of non-Mohawk planes became a million-dollar business last year, grossing \$1,083,590, an increase of more than 75 per cent over 1961's \$615,760.

SCIENCE WEEK

Whale 'Talk' Record Will Play 25 Sounds

By THE ASSOCIATED PRESS

W.E. Schevill of the Woods Hole Oceanographic Institute in Massachusetts is pursuing an unusual scientific quest—recording the sounds made by whales. He now has a phonograph record of about 25 different sounds.

The underwater sounds made by various types of marine life drew attention during World War II when scientists were devising equipment to detect enemy ships. Schevill later decided to learn who was "talking" down there, and launched his whale study, he writes in the institution's publication "Oceanus."

On its long trip, the "Mars 1" station, as the Soviets have named it, will approach the so-called belt of asteroids or tiny planets, believed to be the remnants of a planet destroyed in collision with another planet or other object.

Some meteorites falling upon earth are believed to come from this belt, directed earthward by collisions between asteroids. The Mars probe is equipped to measure meteorite particles ostensibly formed in the asteroid belt the Soviets report. If successful, the probe could supply the first sampling of this belt, as well as giving close-up observation of Mars.

Asteroid and Mars Spy

Russia's space probe heading toward Mars is almost halfway along its stupendous journey, and is reporting on cosmic rays originating somewhere in the Milky Way, says the Soviet news agency, Tass. No details were given.

NEW LOW MID-WEEK RATE
Fr. \$10.00 Per Day

SETON INN SPA
On Lakewood Golf Course

- Free Massage, Gym
- Hikes
- Free Golf (Mon - Thurs)
- Superb Cuisine

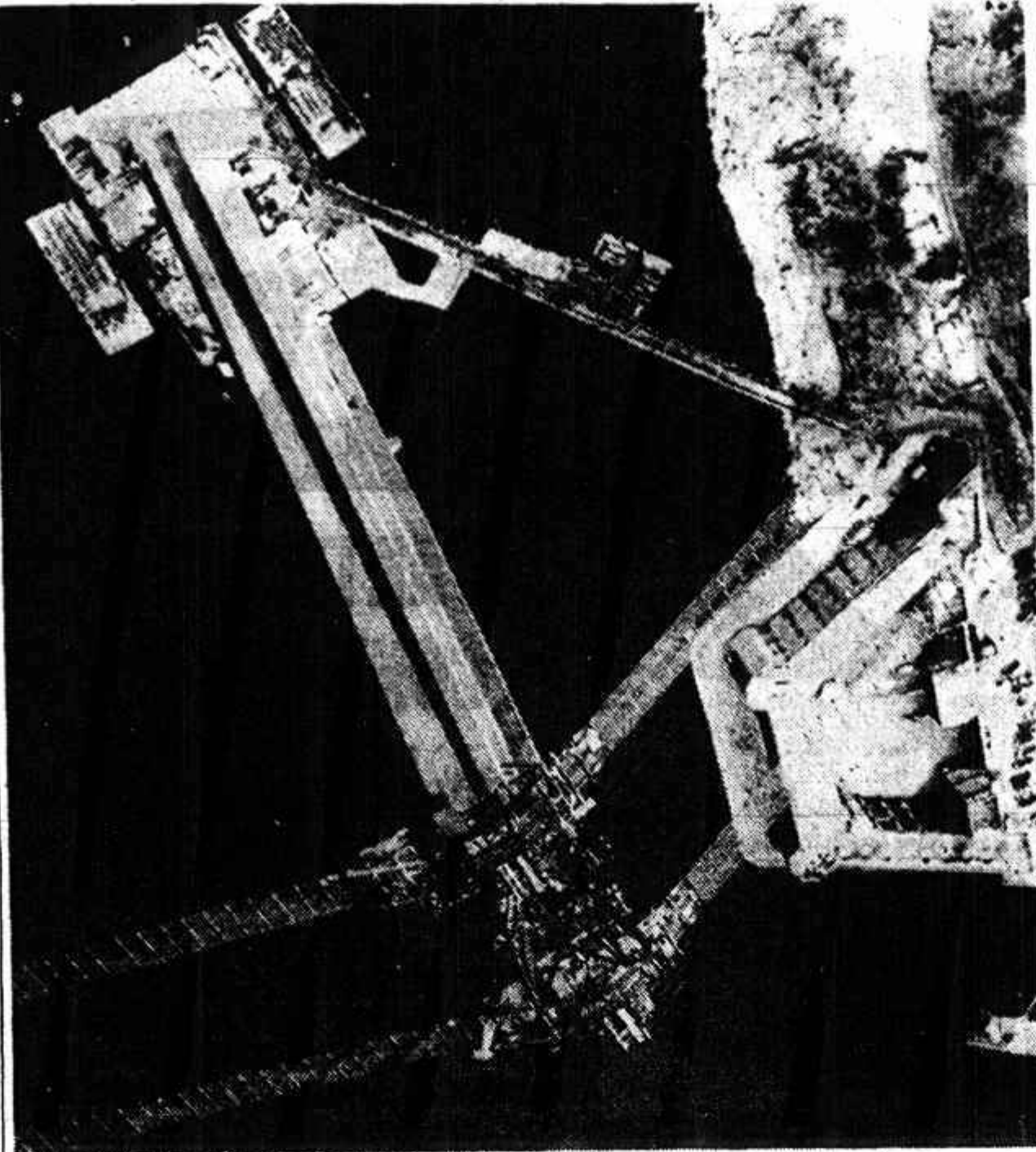
NELLIE, famed Bill Brown dietician
SELMA MANDELL, Dir.
Lakewood, N.J. Foxcroft 3-7723
New York Office: MU 7-3223

NEW YORK MILITARY ACADEMY
Est. 1889
The School of Distinction

Develop today's Youth for tomorrow's world by building mind, body, character, leadership, regional and national consciousness.

R.O.T.C. Dept. of Army. Graduates successful leading colleges, individual attention through small classes. Variety, intramural sports, swimming, physical training, golf, tennis, rifle, band, scholarships. Grades 6-12, and P.O.

Write for Catalog:
75-A Academy Avenue,
Cornwall-on-Hudson, N.Y.



HELICOPTER view of 690-foot tower on Staten Island side of Verrazano — Narrows

Work Rushed On Bridge To Staten Island

NEW YORK (AP) — A new engineering wonder is being rushed to completion between two proud, old forts that once stood guard over New York harbor.

The structure is the \$325-million Verrazano-Narrows Bridge, destined to become the world's largest single span suspension bridge.

It is to be completed in 1965 and will arch majestically from Ft. Hamilton in Brooklyn to Ft. Wadsworth in Staten Island. On a clear day it will be visible 40 miles away.

For travelers approaching New York by sea, it will be an imposing landmark of the huge metropolis.

Comparative Figures

Its 4,260-foot center span will be 60 feet longer than San Francisco's Golden Gate Bridge, now the longest between piers, and its two supporting towers will be almost 70 stories high.

If you want to compare it with other big things, the center span will be:

- Almost three times the height of the Empire State building (1,472 feet), the world's tallest building; more than four times the length of the liner France (1,035), world's longest passenger ship; longer than the Grand Coulee Dam (4,173), nation's largest concrete dam, and one-seventh the height of Mt. Everest (29,028), highest mountain the world.

The reason a force of 1,000 men is doing a rush job is purely a matter of finance. The quicker the bridge, started in 1959, is completed, the sooner the city can start collecting tolls, and getting something back on its investment.

Both of the 690-foot towers are complete and much of the work is done on concrete anchorages to which steel supporting cables will be attached. The cables, most expensive item of the bridge, will cost \$50 million.

Work on the four cables, each a yard in diameter, will begin in the spring and last for six months. Then the year-long job of erecting the suspended span will commence.

When completed, the bridge and its approaches will be nearly three miles long and have two traffic levels of six lanes each. Until traffic demands it, only one level will be used.

bridge being built connecting New York's boroughs of Brooklyn and Staten Island. The 4,260-foot center span will be 60 feet longer than San

Francisco's Golden Gate bridge, now the longest between piers. Its two supporting towers will be almost 70 stories high. —AP Wirephoto.

Icelandic Smokers' Tax Aids Cancer Research

By ALTON BLAKESLEE
Associated Press Science Writer

NEW YORK (AP) — In Iceland, cigarette smokers are raising a treasury for cancer education and research.

A special tax of half a cent per pack has been levied, the money to go to the Icelandic Cancer Society. The society expects to reap about \$50,000 a year, all above its current annual income of \$10,000 to \$20,000, says Dr. Niels Dungal, society president.

Part of the money raised when smokers smoke will go into a

campaign to urge people, especially teenagers, not to smoke. If this succeeds, the revenue from the cigarette tax will go down.

Iceland apparently is the first country to earmark a tax on cigarettes for such purposes, Dungal said in an interview during a visit to the United States. The tax took effect Jan. 1.

Regular Smear Tests

The society hopes to give regular smear tests for early detection of cancer of the cervix to all women aged 25 to 60 and to seek causes of stomach cancer.

Dungal, professor of pathology at the University of Iceland, is among those who blame cigarette smoking as a cause of lung cancer, a position challenged by some others, including the tobacco industry.

"Thirty years ago Icelanders smoked less than any nation in Europe and had practically no lung cancer," he said. "Then cigarette imports were limited to one pound of tobacco (about 450

cigarettes) per person per year and have risen to 3½ pounds (1,575 cigarettes) per person. Some do not smoke at all while others smoke one to two packages a day, and a few even more."

Lung cancer has increased to about 10 to 15 cases per year, compared with one case a year 30 years ago, Dr. Dungal said.

TRAVEL TALK

By Karl H. Hollman

Do you have trouble finding a place to park?

One of the reasons we're located here in Hastings is the fact that it's so convenient to serve our Yonkers clientele — just come up Warburton Avenue, turn right on Main Street, and there you are!

A large lot is directly across the street, and we're delighted to pay our client's parking fees.

Though we're open only since November, remember that our 17 years' experience in the travel business is at your disposal — whatever your travel project, be it a short weekend bus trip, a trip around the Pacific or the World, you'll get the same interested, knowledgeable, unbiased information and service — personal attention to every detail of your trip.

Convince yourself, call Greenleaf 8-0061 NOW for detailed facts on any trip in this travel section, or visit us at 10 Main Street, Hastings, daily between 9 and 6, Saturdays until 1 P.M. Any evening by appointment. Man spricht Deutsch.



Community Engineers Will Undergo Testing

VALHALLA—Thirty-two Westchester men will undergo tests for professional engineering licenses for three days starting today. The men have been attending classes three evenings a week at Westchester Community College.

A new class, to begin Feb. 18, is being organized for the June 24-25 examination. Applications are being accepted by Dr. Harold B. Desnoyers, chairman, Technical Sciences Division, Westchester Community College.

Grossinger's
Has Everything
GROSSINGER, N.Y.

N.Y. Office 221 West 57th St.
Direct Line-LONGacre 5-3071
Fri. - Sun., March 8-10.

FUN AHEAD AT GROSSINGER'S

It'll be all for fun and fun for all at the 49th annual Grossinger Winter Carnival,

SKI CATAMOUNT... STAY AT
WHITE STALLION SKI LODGE

Easy to reach via p'kways. Next to Coliseum. Ice-skating, Horse-drawn sleigh rides, Cocktail Lounge, Dancing, Amer. or Mod. Amer. Plans. Group rates. Learn-to-Ski-Week Pkgs. Brochure: P.O. Box 308W, Hillsdale, N.Y. Reservations: FA 5-6742.

IT'S 73° IN MIAMI-WHY WAIT?

"Northeast treats you like a guest, not just a passenger!"

Now is the time to be in Miami! The weather is perfect, and plenty of excellent hotel rooms are still available. You can have your choice if you come down now.

Fly Northeast SuperJets—and get all the extras that make flying a pleasure. Big extras, like flying the only airline that never crowds you in six-across. And little extras, like the extra fun of a Fiestaval Flight. Choose your Northeast flight from 8 SuperJets daily. Call now.

NOW!
SAVE 15%
on special
WINTER
EXCURSION
FARES

NORTHEAST AIRLINES

Call TN 7-1000 or a travel agent

ESCAPE TO BERMUDA • NASSAU OR JAMAICA AS LITTLE AS \$143.50

- 1 BERMUDA—\$143.50*—8 DAYS.** Hotel room with private bath, breakfast, transfers to and from the airport, and round-trip air-fare on the jet-prop Britannia included in the price. And you also will enjoy an exciting sightseeing tour which includes cruising to a secluded tropical island for barbecue lunch, then delighting in true Calypso entertainment, at a rum swizzle party!
 - 2 NASSAU—\$248*—7 DAYS.** This exceptional tour has two very special features: a leisurely half-day trip around the island to gaze at its charms from off-shore (aboard a grand yacht); plus a tour ashore to see the island's truly great scenic splendor and ancient historic monuments. Of course, the price also includes room with bath, all breakfasts and dinners, transfers to and from airport, and round-trip airfare aboard Rolls-Royce 707 jet.
 - 3 JAMAICA—\$389*—8 DAYS IN MONTEGO BAY.** To show you more of the wonders of this exotic isle, a picturesque drive along the beautiful shore roads is included in this tour. You'll enjoy all the points of interest along the way, and visit a grand historic colonial plantation. Price also includes room with bath, all breakfasts and dinners, as well as round-trip jet airfare, and transfers.
- See your Travel Agent soon, but send in the Coupon Now.

ALL OVER THE WORLD **B.O.A.C.** TAKES GOOD CARE OF YOU

BRITISH OVERSEAS AIRWAYS CORPORATION
DEPT. BNJ-187, 530 FIFTH AVE., NEW YORK CITY • MU 7-1400

I want to make a get-away from dull vacations! Please send me brochures on BOAC's Escape Club to: BERMUDA NASSAU JAMAICA

NAME _____
STREET _____
CITY _____ PHONE _____

All prices are for each of two persons traveling together and are based on double occupancy in hotels. Round trip airfare from New York is included in each case.

* Effective through March 16. Applicable on flights operating on Tuesdays, Wednesdays, Thursdays, Fridays.

† Rates effective through April 14. 248 REV. 3

outdoor and indoor ICE SKATING

indoor POOL & health club

TOP ENTERTAINMENT 2 ORCHESTRAS

Fallsview
BLEENVILLE, NEW YORK
Hotel allenella 1600
N.Y.C. DIRECT: WI 7-4428