



SANY Group Co., Ltd., China

QUALITY CHANGES THE WORLD



IOHQ



MySANY App



Follow us

SANY Group Co., Ltd., China



QUALITY CHANGES THE WORLD

Leadership

Liang Wengen

Principal Consultant & The Chairman
of the Supervisory Board

Board of Directors

QUALITY CHANGES THE WORLD **SANY**



Liang Wengen



Tang Xiuguo



Xiang Wenbo



Liang Zaizhong



Yi Xiaogang



Zhou Fugui



Yuan Jinhua



Yu Hongfu



Liang Linhe



Dai Qinghua



Huang Jianlong



Qi Jian

Human Beings Are Great for Their Dreams

I enjoy watching both sunsets and sunrises. I'm always moved by the splendor, beauty and sense of accomplishment of each day's colorful sunset also by the feeling of renewal and promise brought on by each morning's sunrise. In the same way, I have great dreams for my company, SANY. As a powerful inner driver, these dreams push me to succeed, to excel. I believe that my hard work can contribute to the success of SANY in the world's arena.

Because of risks and challenges, starting a business takes courages. But in less than two decades, SANY has grown from its humble beginnings to a leader in construction machinery manufacturing. The SANY brand and its products are now recognized as high quality. Encouraged by this success, I have become even more determined to fulfill the monumental

mission of expanding our product lines and improving our quality even more. We will be truly successful only when SANY's products are superior to those of our strongest competitors.

SANY's goal is to reshape China's construction machinery industry with advanced SANY technology, to build products recognized for their quality worldwide while continuously improving them through innovation, to exceed our customers' expectations with unparalleled quality and services, then finally to make sure that Made in China means top quality to the rest of the world.

Human beings are great for their dreams. SANY is living its dreams step by step.

About

SANY Group

Founded in 1989, SANY Group is a multinational company that is pursuing the vision of "building first-class enterprises, fostering first-class talents, and making first-class contributions to society". With the strategy of "Globalization, Digitalization, Decarbonization", SANY has been striving to build a global brand and become a leading equipment manufacturer in the industry.

With three listed companies, including SANY Heavy Industry, SANY International, and SANY Renewable Energy, SANY's core businesses are equipment manufacturing for engineering machinery, covering a full product portfolio, including concrete machinery, earthmoving machinery, hoisting machinery, road machinery, piling machinery, port machinery, mining machinery, petroleum drilling machinery, etc. Among these, SANY's concrete machinery has been occupying the largest market shares globally, and the acquisition of Putzmeister in 2012 further strengthened the market position. In 2020, SANY's excavators won the global sales champion for the first time. In addition, the large tonnage crane, crawler crane, piling machinery, mobile port machinery, coal mining machinery, and so on are all leading in sales in China.

Besides, SANY is also striving to enter the new energy industry, including wind power, hydrogen energy, photovoltaic power, and energy storage. SANY also vigorously promotes the electrification of existing products, contributing to the emission reduction goals of the United Nations.

In 2023, SANY's overseas sales set a record high, exceeding 7.3 billion US dollars with a sales network covering over 180 countries and regions. At the same time, SANY Heavy Industry was recognized as one of the "50 Smartest Companies" by MIT Technology Review. SANY Group was named one of the "Most Admired Chinese Companies" by Fortune for 13 years consecutively. In 2023 the "Forbes China Best Employers" honored SANY as "China's Best Employer in Innovative Practices for 2023".

Sticking to our mission "Quality Changes the World", SANY invests about 5% of its annual revenue in R&D. In terms of technology development, SANY has applied for a total of 13,694 patents, of which 10,613 has been awarded.

SANY remains at the forefront of transformative change, harnessing the power of technology to drive progress and shape a brighter future for generations to come. As we forge ahead, SANY is committed to delivering superior products and solutions that empower our customers and communities worldwide. Together, we will continue to build, innovate, and lead the way towards a better tomorrow.



Why We Are Called "SANY"?

SANY, the literal meaning of which is "three ones" in Chinese, derives its name from the English pronunciation of the company's Chinese name (三一 Sānyī). The name represents our company's vision to achieve three primary objectives: **to build first-class enterprises, to foster first-class talents, and to make first-class contributions to society.**

The company's logo visually embodies this vision, featuring three interlinked numeral ones, reflecting the stability of the manufacturing industry. The centripetal symbol represents the united efforts of all SANY members in pursuing their shared dream.

SANY

Entrepreneurial Journey

In late 1985, Liang Wengen, Tang Xiuguo, Yuan Jinhua and Mao Zhongwu left their positions at state-owned enterprises to pursue an entrepreneurial venture in Maotang, Lianyuan. In the beginning, they were faced with a myriad of challenges including the industrial and economic climate of the nation. Through perseverance, they overcame these obstacles and successfully established the Hunan Lianyuan Welding Material Factory.

Over the years, the factory experienced significant growth, and by 1991, it had become the largest private enterprise in Loudi, boasting a production value exceeding 15 million USD. After conducting extensive research for over two years, Liang Wengen and Xiang Wenbo devised a dual-entry strategy to expand their business into the central city of Changsha and

the construction machinery industry. Consequently, SANY Heavy Industry was officially founded in Changsha in 1994.

From independently developing their first trailer pump to making a breakthrough in the excavator market and ultimately becoming a titan in the construction machinery sector and a front runner in the new energy industry, SANY's journey from humble beginnings to continual breakthrough innovations has fundamentally altered the global perception of "Made in China".

Today, SANY's aspirations extend beyond being the global leader in sales. We are dedicated to establishing ourselves as a renowned enterprise, a world-class brand, and a trailblazer in the fusion of industrial and digital technologies.



1989

Starting from scratch

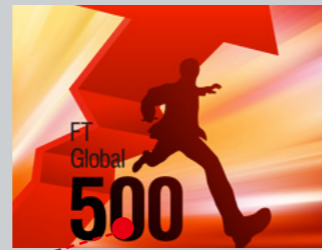
Liang Wengen, Tang Xiuguo, Mao Zhongwu and Yuan Jinhua founded Hunan Lianyuan Welding Material Factory in Lianyuan, Hunan province.



2003

A listed company

SANY Heavy Industry was successfully listed on the Shanghai Stock Exchange. SANY Heavy Machinery Co., Ltd. was founded, focusing on excavators and petroleum drilling machinery.



2012

Putzmeister made a member of SANY Group

SANY acquired the leading German concrete machinery manufacturer Putzmeister.



2021

Ranking 468th in Forbes Global 2000

SANY Heavy Industry ranked first among heavy equipment manufacturers in China and second in the world.



1994

Advancing into heavy machinery industry

Hunan Lianyuan Welding Material Factory was officially renamed to Hunan SANY Group Co., Ltd. and its headquarters officially moved to Changsha.

2011

Recognized in a leading publication

SANY Heavy Industry entered the FT Global 500 ranking of the world's largest companies.

2020

Sales revenue exceeding 15 billion USD

SANY Heavy Industry became the first heavy equipment manufacturer with sales revenue exceeding 15 billion USD in China. SANY sold 98,705 excavators in 2020, accounting for 15% of the total volume for excavator sales in the global market.

2023

China's Best Employer in Innovative Practices

In the "2023 Forbes China Best Employers" election, SANY was honored as "China's Best Employer in Innovative Practices for 2023," standing out as the only equipment manufacturing enterprise to have secured this title.

INDUSTRIAL LAYOUT



US
A
N
K

QUALITY CHANGES THE WORLD

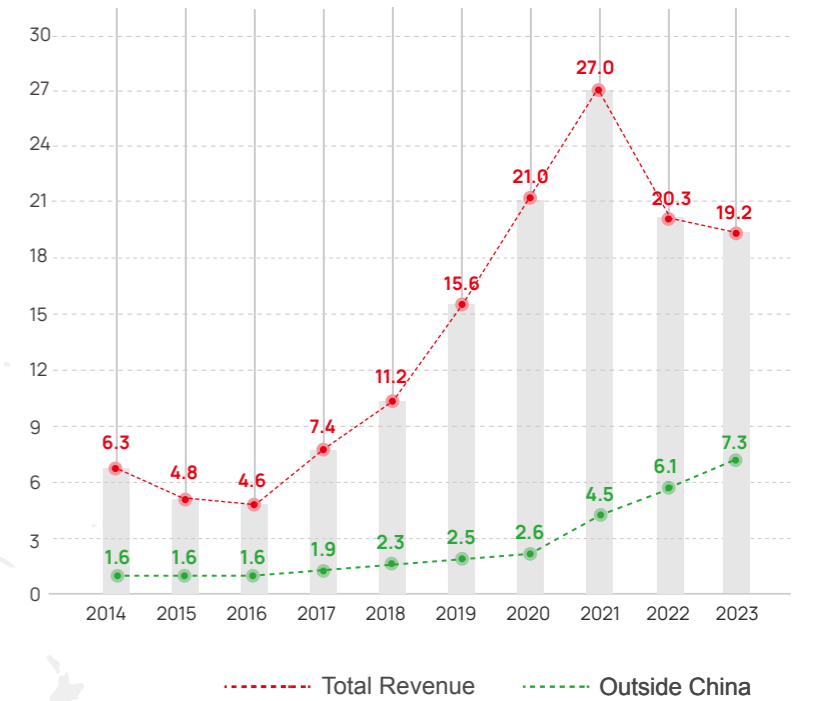
INDUSTRIAL LAYOUT

As a leading manufacturer of construction and mining machinery, renewable energy system, and cloud service provider, SANY expands international footprints with 15 industrial bases outside China and 7 industrial clusters in China, supporting our customers to realize their self-worth.



- Industrial Clusters in China
- Industrial Bases Outside China
- R&D Centers

Sales Revenue of SANY Group from 2014 to 2023
(in billion US dollars)



15
Industrial Bases
Outside China

7
Industrial Clusters
in China

46
Lighthouse Factories
Worldwide

886
Parts Warehouses
Outside China

4
R&D Centers

650+
Service Sites

300+
Dealers

180+
Sales Regions & Countries

KARAWANG, INDONESIA

Export China's Intelligent Manufacturing

Located in the KIM Industrial Park in Karawang, SANY's Indonesia factory spans approximately 100,000 square meters and has an annual capacity of 3,000 units. As SANY's first lighthouse factory outside China, the factory is also the first overseas manufacturing base of China's construction machinery built in full accordance with Industry 4.0 standards and the first systematic overseas export case of China's intelligent manufacturing of construction machinery. On September 12, 2023, Phase II of the Indonesia Industrial Park held a groundbreaking ceremony.



PEACHTREE, USA

Made for America, More than Machines

Established in 2007, SANY America, located in Peachtree, Georgia, and covering an area of 37,000 square meters, mainly engages in pump trucks, hydraulic excavators, crawler cranes, and rough-terrain cranes. SANY America not only provides high-quality machinery to the market but also practices its social responsibility.



BEDBURG, GERMANY

Men & Machines

Versed in design and engineering, SANY Europe was inaugurated in Bedburg, Germany, in 2011. SANY Europe offers a wide range of CE compliant products, including hydraulic excavators, mobile port machinery (reach stacker, empty container handler, heavy duty forklift), rotary drilling rig and crawler crane for the European market.



PUNE, INDIA

Incredible Industrial Implementation

The growing market in India is always attractive to global investors. SANY India, initiated in 2002, was the Group's first global market. With just the combination of advanced technologies and local best practices, SANY brings top-selling excavators, cranes, and concrete pumps to the market.



PUTZMEISTER

One Team, Dual Brands

Famous for its nickname "Elephant", Putzmeister joined SANY Group in 2012 and has continued its legendary story together with SANY's concrete machinery. In the first picture, Putzmeister is supporting the most challenging project: renovation of a bridge across the Hoover Dam, USA.



THE YANGTZE RIVER DELTA

East Production Center

The Yangtze River Delta, including industrial parks in Lingang, Kunshan, Changshu, Nantong, Rudong, and Huzhou, is home to SANY's heavy machinery BG and its subsidiary SANY Palfinger. SANY's excavators, loaders, crawler cranes, loader cranes, and environmental protection equipment are mainly produced here.



BEIJING

Diverse Footprint in the Capital

Beijing, the capital of China, is where SANY Heavy Industry's headquarters and SANY Renewable Energy are located. The Nankou Industrial Park is home to the Precast Concrete Factory of the SANY Construction Industry, SANY's Piling Machinery Lighthouse Factory, and SANY Renewable Energy Factory, mainly producing piling machinery, precast concrete, and wind power equipment.



CHANGSHA

A Beacon of Success

As a place where SANY achieved great success, Changsha is also where SANY Group's headquarters is located, including Xingsha Industrial Park, Smart Heavy-duty Industrial Park, and industrial parks in surrounding cities like Ningxiang, Yiyang, Changde, Loudi, and Shaoyang. SANY's concrete machinery, road machinery, hoisting machinery, heavy-duty trucks and fire-fighting equipment are mainly produced here. Nowadays, production facilities are highly automated with robotic arms and computerized conveyors.



XI'AN

A Catalyst for Progress

The intelligent manufacturing industrial park in Xi'an, which mainly produces off-highway mining trucks and hydraulic supports, rolled off the first equipment in March 2023. The factory plans to produce 12,000 sets of hydraulic supports and 6,000 wide-body dump trucks annually with an annual output value of 1.43 billion USD, which is of great significance to enhance the production capacity of China's wide-body dump trucks and promote the development of the mining industry.



SHENYANG

Mining Trip in the Old Industrial Base

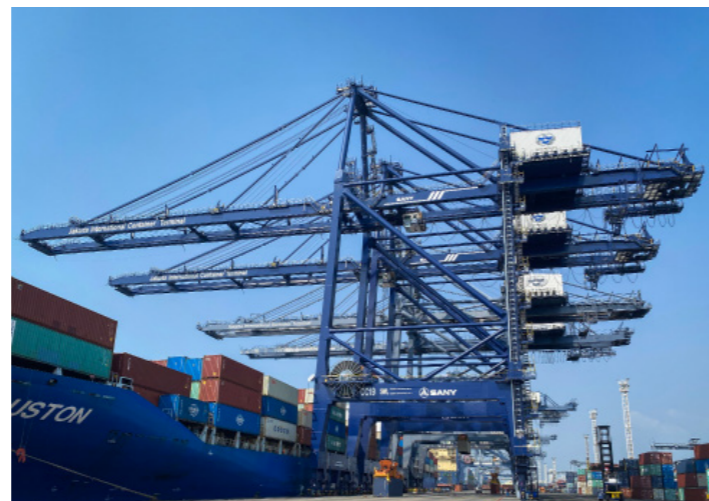
Situated in Northeastern China, Shenyang is home to SANY International Development Ltd., a subsidiary of SANY Group specializing in cutting-edge mining machinery and coal mining equipment. In 2009, SANY International Development Ltd. was listed on the Hong Kong Stock Exchange, becoming the first coal mining machinery manufacturer listed in Hong Kong. From computer-aided design and rapid prototyping to comprehensive test tracks, technologies are being applied to make our equipment solid.



GREATER BAY AREA

Port City, Port Machinery

In 2015, SANY's Zhuhai Industrial Park was officially put into use and mainly produced port machinery. The park now covers an area of 60,000 square meters. This area also includes SANY's IIOT. SANY's ROOTCLOUD has augmented 100+ key accounts to elevate their OEE, reduce cost per unit, save energy, and boost corporate revenue by ways of data lifecycle management, industrial blockchain, cloud platform operation, and big data analysis.



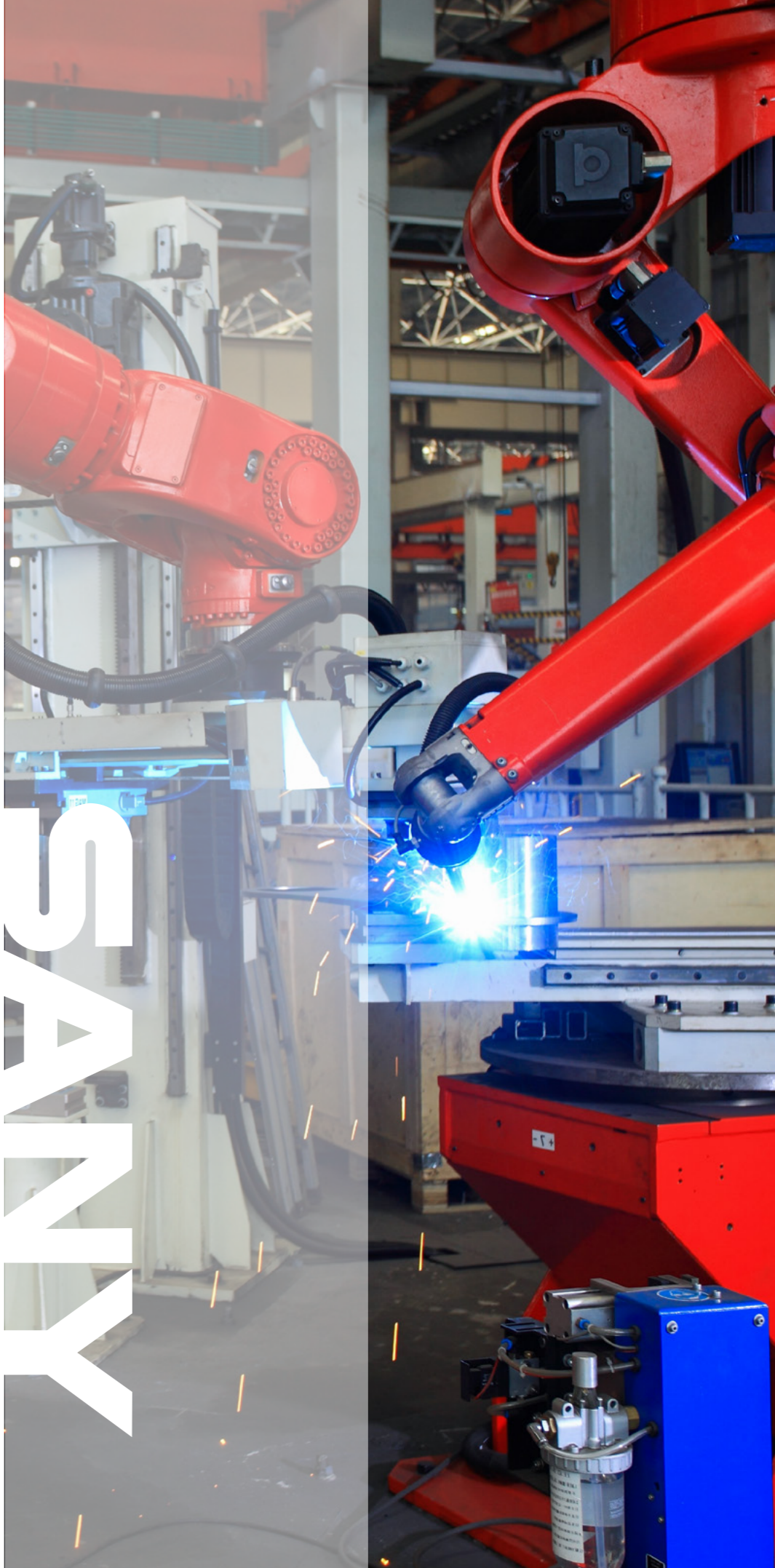
XINJIANG

Wild West, Golden Opportunities

SANY Northwest industrial complex is one of the strategic facilities that strengthens the connection of China and Central Asia. The complex is supplying northwest China, Central Asia, and Russia with a comprehensive product portfolio for construction and mining.

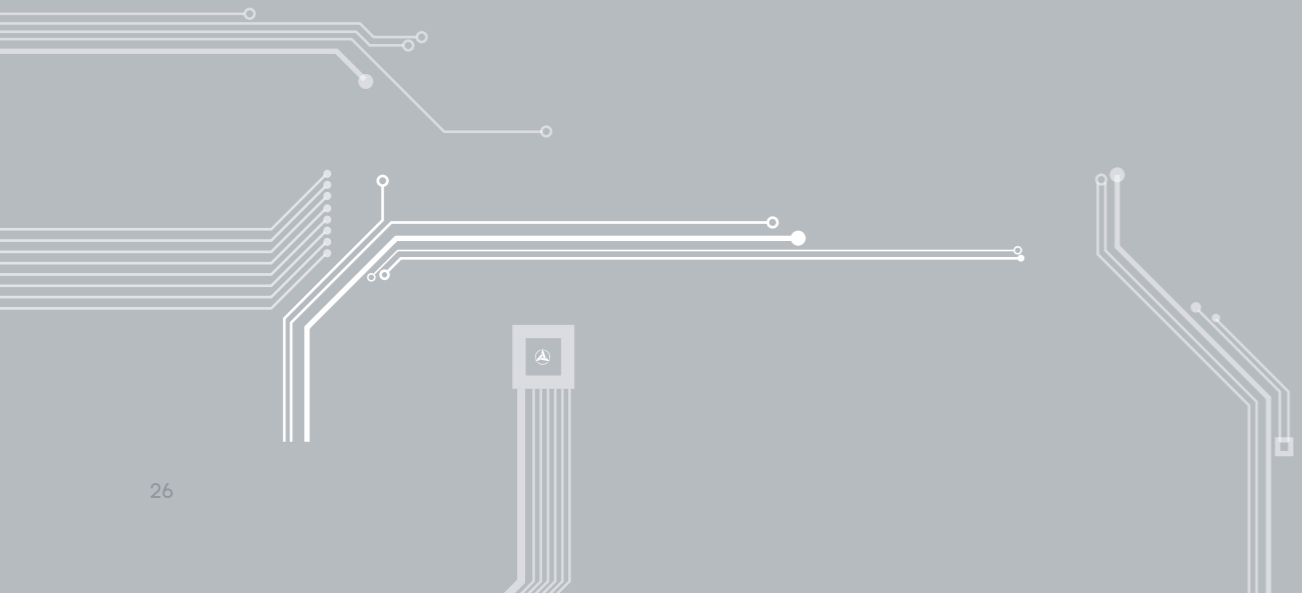


INTELLIGENT MANUFACTURING & DIGITALIZATION



SANY

QUALITY CHANGES THE WORLD





Lighthouse factory

Currently, SANY has 46 "Lighthouse Factories" worldwide, two of which - the SANY Drilling Machinery Factory in Beijing and the No. 18 Factory in Changsha - are certified by the Davos World Economic Forum (WEF) and are the only two in the industry globally.



In 2021, the Davos World Economic Forum (WEF) published the latest batch of "Lighthouse Factories" in the global manufacturing industry and SANY's drilling machinery factory in Beijing made the list, becoming the first certified lighthouse factory among heavy equipment manufacturers.

Facing the ever-changing and increasingly complex demands of the construction machinery market, SANY applied up-to-date technologies such as human-machine collaboration, automation, AI and IoT technologies, boosting productivity by 85% while reducing production lead time by 77% (from 30 to 7 days). The digital transformation of SANY prompted the launch of a new subsidiary company, SANY Robot Technology Co., Ltd., propelling SANY to become the pioneer of intelligent manufacturing.

In 2022, the No. 18 Factory in Changsha was included in the new list of lighthouse factory in the global manufacturing sector as the most advanced and smartest factory in the industry. Relying on the ROOTCLOUD, the factory's 9 major manufacturing processes, and 32 typical production scenarios are fully automated. As a result, the site expands production capacity by 123%, improves labor productivity by 98%, and reduces unit manufacturing cost by 29%.



PRODUCT PORTFOLIO



QUALITY CHANGES THE WORLD

Product Milestones

1994

The rollout of the first SANY trailer pump ended China's dependence on imported units.

2000

SANY produced the world's first fully hydraulic motor grader.

2004

SANY developed the three-gradation trailer pump successfully.

2006

SANY successfully entered the port machinery market with its RSC45-5M Container Reach Stacker.

2008

A fully hydraulic rotary drilling rig of the largest tonnage in Asia and the most powerful whole-rock roadheader in Asia rolled off the line at SANY.

2010

The SANY 1,200-ton all-terrain crane SAC12000, the largest in China, was manufactured.

2013

SANY's A8 Series Concrete Batching Plant integrated top technology of China and Germany, which led the first "Industrial Revolution" in the construction concrete industry.

2015

SANY successfully launched the first 48-meter long-span water tower fire truck, entering the field of firefighting equipment.

2017

SANY successfully launched China's first high-mobility multifunctional fire truck.

2019

SANY released the world's first 5G teleremote-controlled excavator, the world's first autonomous electric truck mixer, autonomous rollers and pavers, and autonomous cranes, leading the industry into the autonomous era.

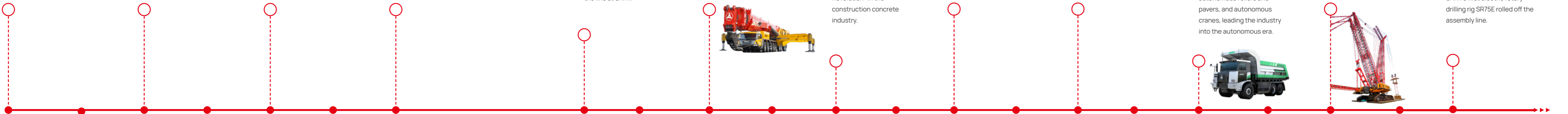
2021

SANY broke the world's largest tonnage crane record for the 3rd time with the delivery of its 4,500 ton crawler crane SCC45000A.

2023

SANY Mota 1165 electric tractor set a Guinness World Record by traveling over 800km on a single charge.

SANY's first electric rotary drilling rig SR75E rolled off the assembly line.



1998

SANY successfully developed the first 37-meter truck-mounted concrete pump.

2003

The launch of a complete product line of SANY road machinery marked a milestone in road construction technology in China.

2005

SANY launched the first 56-meter concrete pump in Asia.

SANY's cold planer represented a breakthrough in road construction technology in China.



2009

SANY produced the first 2 MW wind turbine and achieved grid-connected operation, making SANY a global wind power manufacturer with proprietary intellectual property rights and the capacity to produce the entire industrial chain.

SANY launched the SRT95, China's biggest large-tonnage off-highway truck, ending China's dependence on imported mining trucks.



2011

With the 86-meter boom concrete pump, SANY set a Guinness World Record for the longest boom.

Known as the "World's No. 1 crane", the SCC86000TM crawler crane rolled off the line with a maximum lifting capacity of 3,600 t.

2014

SANY entered the field of prefabricated construction equipment.

2016

SANY successfully launched three products including light-duty assault vehicles, truck-mounted mooring airships and light-duty unmanned combat platforms.



2018

SANY Heavy Truck was born, launching the first heavy truck of which 12,000 units were sold in the first year through online sales alone.



2020

SANY produced the SCC40000A, a 4,000-ton capacity crawler crane with a max lifting moment of 90,000 t.m.

SANY released the 125-t large excavator SY1250H.

SANY developed the autonomous mining truck SKT90E, which can be coordinated with the 5G-controlled excavator.



2022

SANY's first 300-ton electric-drive front shovel, SY2600E and 200-ton electric-drive excavator SY2000H officially rolled off the production line.

CONCRETE MACHINERY



SANY is the world's largest manufacturer of concrete machinery including concrete pumps, trailer pumps, line pumps, truck mixers, batching plants, and more. The sales and manufacturing volume of concrete pumps have been ranked No. 1 in the world. The sales volume of concrete batching plants has been ranked No. 1 globally for 11 consecutive years.

SANY's market share of precast concrete equipment remains the largest in China.

With more than 20 years of technological innovation, SANY concrete machinery continually sets new Guinness World Records. Over 80% of skyscrapers worldwide over 500 meters in height are pumped by SANY.



Truck-mounted Concrete Pump



Truck Mixer



Line Pump



Trailer Pump



Placing Boom



Shotcrete

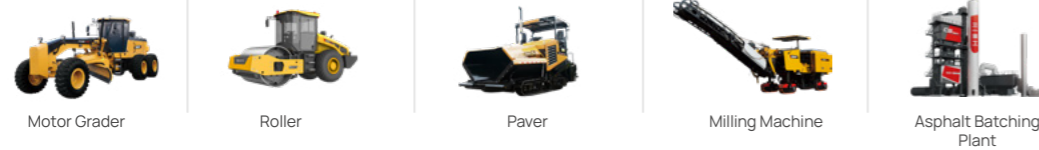


Batching Plant

ROAD MACHINERY



SANY Road Machinery provides complete equipment and a series of solutions for road construction with sales covering over 130 countries and regions. The market share of fully hydraulic rollers, asphalt batching plants, and pavers ranks No. 1 in China. With 3 R&D bases and 4 local factories worldwide, SANY Road Machinery is striving to provide smarter and greener products.



EARTHMOVING MACHINERY



SANY has developed hydraulic excavators with a product range from 1.6t to 400t. Besides the crawler excavators, SANY also manufactures a full series of earthmoving machinery including wheeled excavators, long-reach excavators, forestry excavators, demolition machines, backhoe loaders and wheeled loaders, as well as electric machines covering electric excavators and electric loaders.



PILING MACHINERY



One out of every three rotary drilling rigs in China is manufactured by SANY. SANY has set the record for the deepest offshore drilling with its 149-m rotary drilling rigs, and has successfully met the need for large-scale and ultra-deep pile foundation construction that the Chinese rotary drilling equipment industry lacks. Selling to over 60 countries and regions, SANY's piling machinery accounts for 60% of the export market share with the number of overseas equipment exceeding 2,500 units.

HOISTING MACHINERY

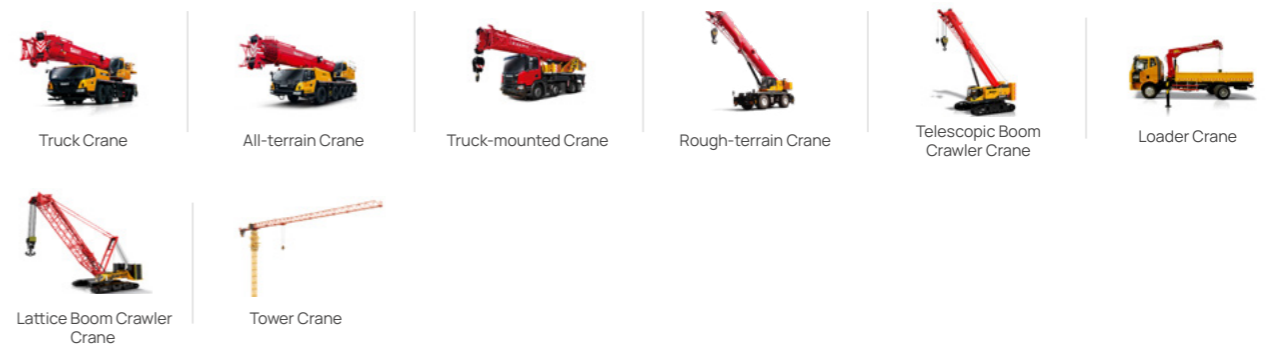


SANY is a record breaker in the manufacturing of large-tonnage crawler cranes around the globe, including the first 1,000-t crawler crane in Asia, the first 1,200-t all-terrain crane in Asia, the 4,000-t crawler crane debuted in 2020 and the 4500-t in 2021. SANY hoisting machinery also sets and keeps the wind

power hoisting height record of 170 meters. The world's first batch of electric telescopic crawler crane SCE800TB-EV was successfully exported to the Netherlands in 2022.



Rotary Drilling Rig Hydraulic Grab Trench Cutter Horizontal Directional Drill



Truck Crane All-terrain Crane Truck-mounted Crane Rough-terrain Crane Telescopic Boom Crawler Crane Loader Crane

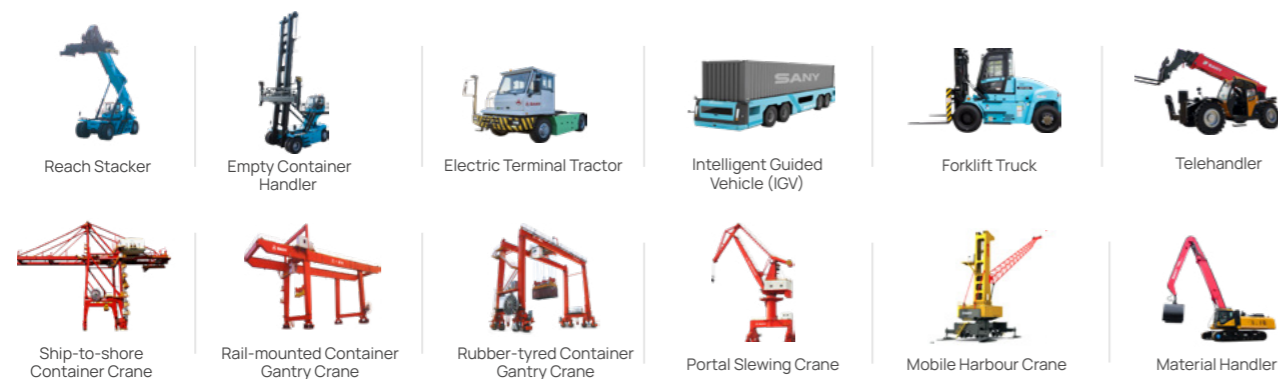
Lattice Boom Crawler Crane Tower Crane

PORT MACHINERY



Since launching the first reach stacker in China in 2005, SANY's port machinery developed rapidly with reach stackers and empty container handlers accounting for 65% of the market share in China, 30% globally. As of 2023, over 600 units of SANY's port crane equipment have been delivered to over 20 countries and regions, including

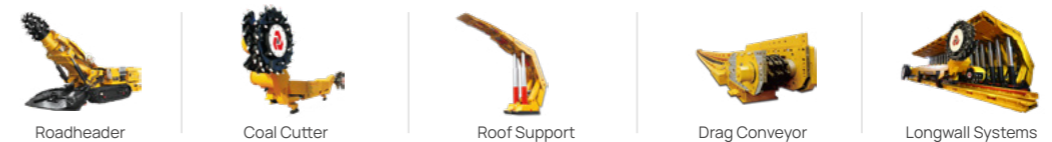
120+ STS cranes, 200+ RTG cranes, and 300+ RMG cranes, and the sales volume of new energy products, including electric reach stackers, electric empty container handlers, and electric terminal tractors, reached 1000 units, accounting for 80% of the market.



MINING MACHINERY



The first SANY roadheader rolled off the line in 2004. Now SANY roadheaders range from 132 kW to 630 kW in total power. SANY's market share in China for mining machinery has exceeded 60% (with hard rock tunnel boring machines over 80%) and has ranked No. 1 for 15 consecutive years. In 2020, SANY's first intelligent roadheader EBZ160i and EBZ260i made its debut.



MINING TRUCK



SANY has four major series of mining trucks with load capacities from 40t to 230t. In 2020, the 60t pure electric off-highway mining truck SKT90E was launched, which was successfully applied to the harsh working conditions at an altitude of 5,000 meters. In 2021, the 100t SKT105S rolled off the assembly line, filling the gap of large-tonnage wide-body vehicles in

China. Currently, SANY has fuel, hybrid, pure electric, and autonomous mining trucks selling worldwide. In 2023, SANY started to partner with Rosebel Gold Mines, a subsidiary of Zijin Mining and has delivered batches of SET150S electric drive trucks to Suriname, marking a significant milestone in the mining history.

DUMP TRUCK



SANY started the international dump truck business in 2018, and the international sales volume reached 2,809 units in 2023, which is the fastest growth rate in the industry. As the pioneer and practitioner of new energy dump trucks, SANY is committed to building the world's leading brand of new energy dump trucks and providing customized and

scenario-based full cycle solutions with three major product platforms - standard load, composite, and heavy-duty and four major technological routes - pure electricity, hybrid, hydrogen, and diesel. In 2023, the sales revenue reached 400 million USD, ranking No. 1 in the Chinese new energy dump truck market.



Diesel Electric Mining Truck



Rigid Mining Truck



Off-highway Mining Truck



Articulated Dump Truck



Dump Truck



Electric Dump Truck

FIRE-FIGHTING EQUIPMENT



SANY is a leading equipment manufacturer and service provider in the emergency rescue industry. The large-span water tower fire truck is the world's first fully-folded long-span water fire truck with a 3.3-m minimum support system.

PRECAST CONCRETE



In 2008, SANY officially marched into the precast concrete industry and became one of the earliest Chinese companies engaged in research on construction industrialization technology and prefabricated building systems. To date, the

national market share of SANY's PC product line exceeds 50%. The structural technology of the SPCS system developed by SANY has become an industry standard.



Elevating Platform Fire Truck



Demolition Fire Truck



Heavy Emergency Rescue Fire Truck



Multifunctional Foam Fire Truck



Large Tank Water Tower



Large-span Water Tower Fire Truck



High-mobility Multifunctional Fire Truck



Precast Concrete Production Line



Complete Set of Reinforcement Equipment



Autoclaved Aerated Concrete Plate Production Line



Special Transport Vehicles for Prefabricated Members



Mobile Crushing and Screening



PC Special Batch Plant



PC Special Heavy Tower Crane

SEMI-TRAILER TRACTOR



SANY Semi-trailer Tractor is an internet-based truck product that integrates comfort, intelligent programming and cost-effectiveness. Launched in 2018, SANY Semi-trailer Tractor creates a new truck ecosystem model designed to develop interconnection, intelligence, and ecosystem collaboration to build a better product for customers. The new sales channel of SANY Semi-trailer Tractor has opened up a new chapter for web-based sales of commercial vehicles.

Relying on industry-leading R&D and manufacturing strength, SANY Heavy Truck has launched products such as diesel trucks, electric trucks, hydrogen trucks, battery swapping stations, hydrogen integration stations, electric light trucks, and hybrid trucks. The sales of these new-energy heavy trucks have topped the market share in China for 2 years. In 2023, SANY Mota 1165 electric tractor set a Guinness World Record by traveling over 800km on a single charge.



Semi-trailer Tractor

Hydrogen Semi-trailer Tractor

Electric Semi-trailer Tractor

ENERGY EQUIPMENT



Established in 2013, SANY Energy is a specialized company engaged in the R&D and manufacturing of complete oil and gas field equipment sets, EPC contracting, and oilfield technical services. It is dedicated to providing customers with safe, efficient, intelligent, and eco-friendly complete sets of petroleum equipment, comprehensive solutions, and integrated services. The company currently possesses the industry's most comprehensive series of complete fracturing

equipment sets (mechanical, hydraulic, electric drive), sand mixing equipment, blending equipment, instrumentation, coiled tubing equipment, cementing equipment, sand transport equipment, frequency conversion and power distribution equipment, drilling and workover automation equipment, high-pressure manifold products, and large-scale integrated fracturing unit network control, with its own core technologies and products.



Mechanical Fracturing Pumping Unit

Hydraulic Fracturing Pumping Unit

Electric Fracturing Skid

Coiled Tubing Unit

Hydration Unit

Blender Unit

Pipe-racking Manipulator

Pumping Unit Inspection Vehicle

Hydraulic Drilling Rigs

Drilling Floor Manipulator

Power Catwalk



WIND TURBINE

SANY has developed comprehensive wind energy solutions including digital top-level design, intelligent production and manufacturing, complete integration system, core components manufacturing, wind farm designing, EPC, and wind farm operation and maintenance. In January 2024, Windpower Monthly, the leading global publication covering the wind industry, revealed the list of "Turbine of the Year 2023", in which

SANY R.E.'s SI-230100 wind turbine was awarded the Gold Medal in the 'Onshore Turbine, 5.6 MW-plus' category. Meanwhile, in the same month, the 131-meter SY1310A onshore wind turbine blade successfully rolled off the assembly line in the zero-carbon intelligent industrial park in Bayannur, Inner Mongolia, setting a new world record for the longest onshore wind turbine blade.



3.X MW-4.X MW
Platform WTGS



5.X MW-6.X MW
Platform WTGS



7.X MW-8.X MW
Platform WTGS



8.X MW-11.X MW
Platform WTGS

PHOTOVOLTAIC POWER STATION



SANY Silicon Energy, a photovoltaic company owned by SANY Group, focuses on the R&D of core equipment, silicon wafers, cells, components as well as photovoltaic power generation. In November 2022, the first monocrystalline silicon rod rolled off the assembly line. December of the same year, the first high-efficiency module rolled off the production line, successfully opened up the whole PV industry chain.

In October 2023, the first N-type TOPCon was successfully produced in the Zhuzhou industrial base with a power conversion efficiency exceeding 26%. In December, SANY inaugurated the Zhuzhou 5GW Photovoltaic Manufacturing Base with an expected annual output value of 3 billion RMB.

HYDROGEN ENERGY

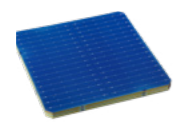


SANY focuses on hydrogen production equipment and hydrogenation equipment, as well as the R&D and manufacturing of its core components, and is committed to becoming the world's leading hydrogen equipment complete solution provider. In 2023, it launched the GW-Grade hydrogen production solution and the world's largest single

hydrogen electrolyzer. The new S-series square electrolyzer can produce hydrogen of 3,000 Nm³/h using renewable energy. In the future, SANY Hydrogen Energy will continue to boost R&D investment and empower the global green energy transition, making greater contributions to the popularization and application of clean energy.



Photovoltaic Module



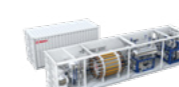
N-TOPCon Photovoltaic Cell Sheet



200Nm³/h PEM AWE Electrolyzer Hydrogen Production Equipment



1000Nm³/h AWE Hydrogen Production Equipment



200Nm³/h Skid-Mounted AWE Electrolyzer Hydrogen Production Equipment



Hydrogen Refueling Equipment



BOP System Equipment

ENERGY STORAGE



SANY is devoted to the R&D and manufacturing of battery swapping equipment, power battery systems, electric energy storage systems, and core components, and is committed to becoming an advanced battery and energy storage integrated service provider. In December 2023, SANY launched three new products - the Linlong battery swapping station, the Tianma 2.0 battery swapping station, and the Mota 176 battery.



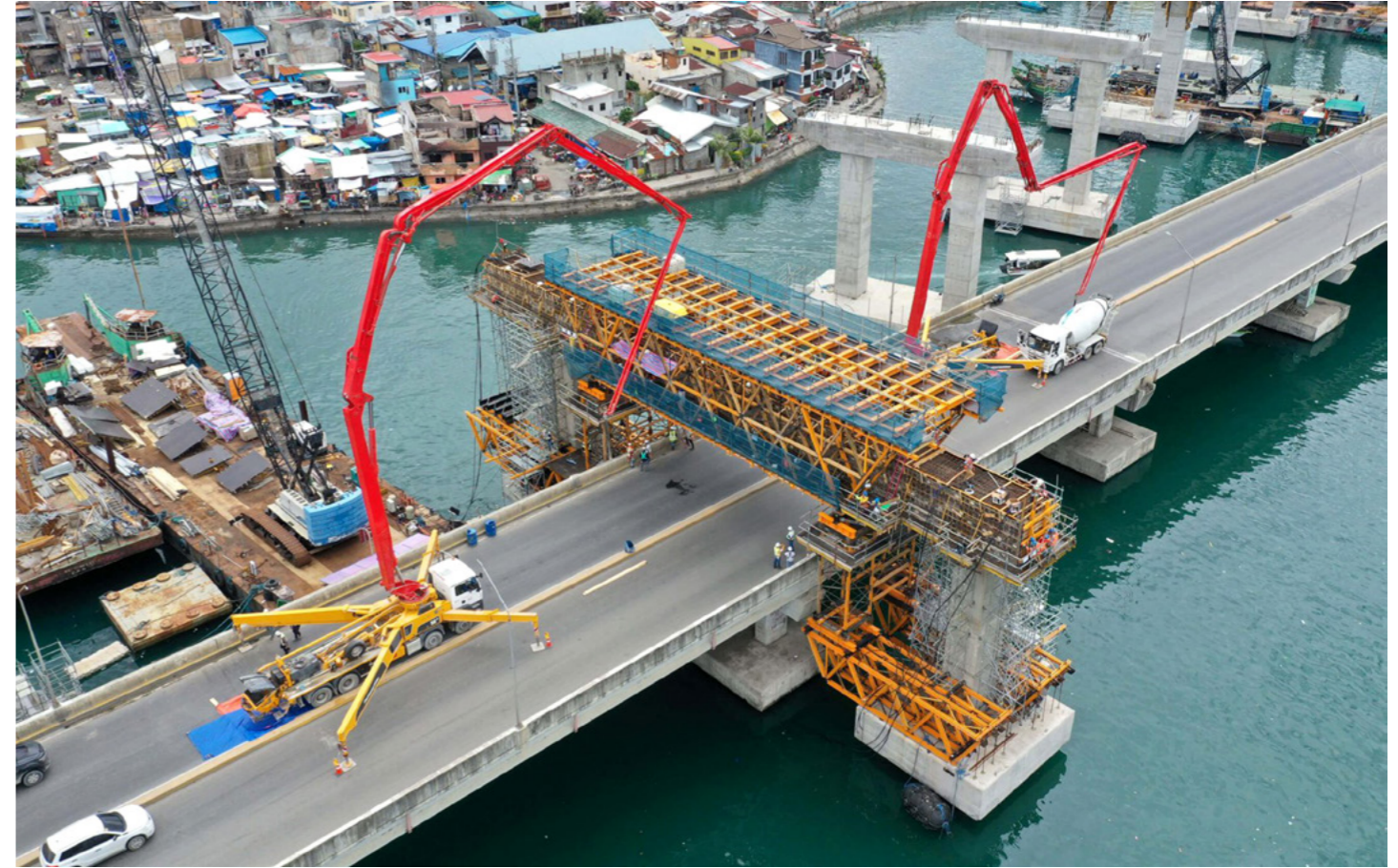
Commercial & Industrial Liquid-Cooling Integrated Energy Storage Cabinet

Liquid-Cooling Energy Storage Container

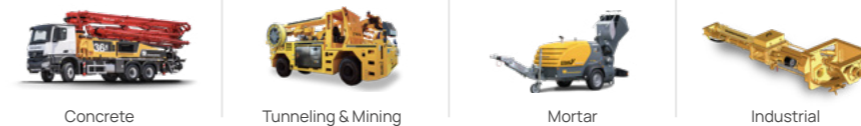
Tianma 1.0 Battery Swapping Station

Linlong Battery Swapping Station

PUTZMEISTER



Established in 1958, Putzmeister is a global leading concrete machinery manufacturer with a business scope covering the fields of concrete equipment, mortar machines, mining and tunneling equipment and industrial solid pumps. In 2012, Putzmeister became part of SANY. 8 years later, Putzmeister began to distribute SANY concrete pumps as well as the new fully electric truck mixer.



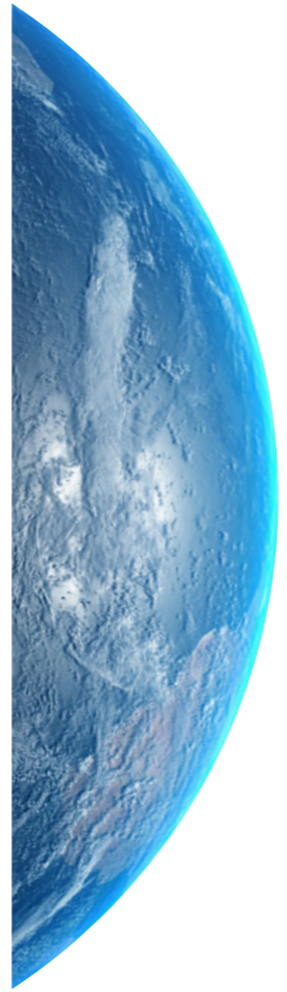
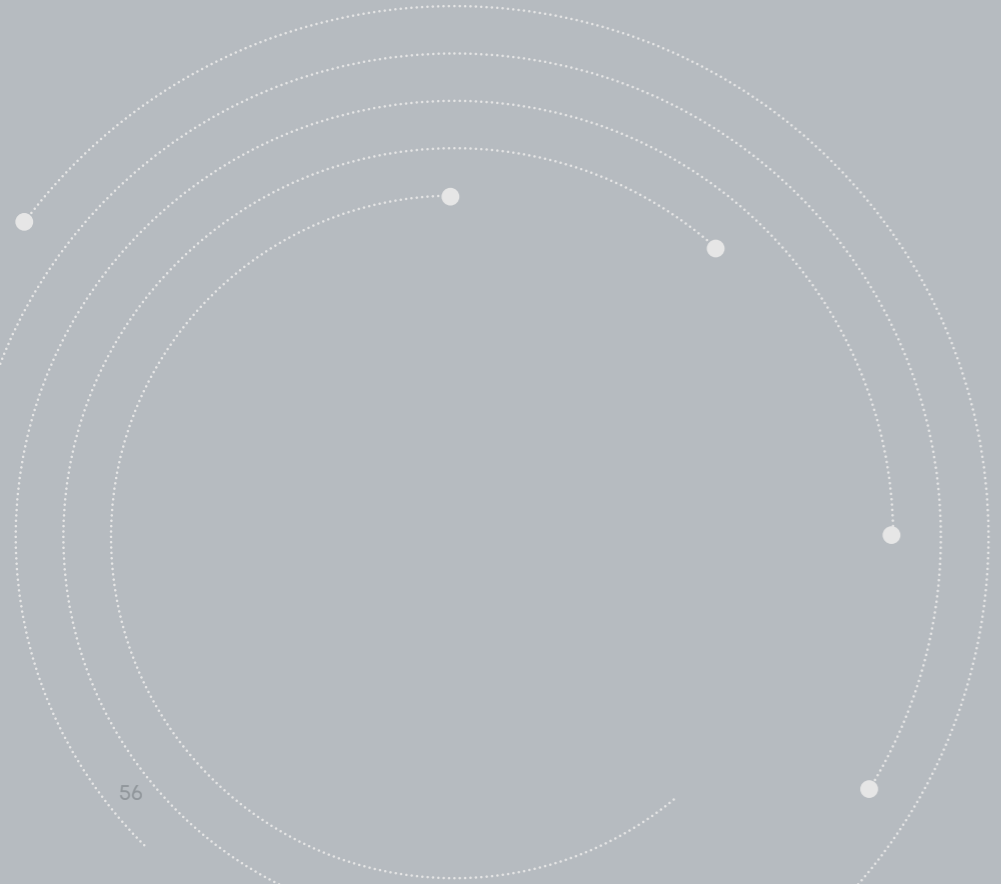
Concrete

Tunneling & Mining

Mortar

Industrial

GLOBAL PARTNERS



SANITY



QUALITY CHANGES THE WORLD

GLOBAL PARTNERS

SANY has established a sales network in more than 180 countries worldwide and has partnered with more than 300 dealers. Together with its global partners, SANY is dedicated to offering better products and services to its global customers under one of the company's strategies- Globalization.



CONSTRUCTION CASES



SANNY

QUALITY CHANGES THE WORLD



ASIA



Three Gorges Dam, China



Landmark 81, Vietnam



Hong Kong-Zhuhai-Macao Bridge



Burj Khalifa Tower, UAE



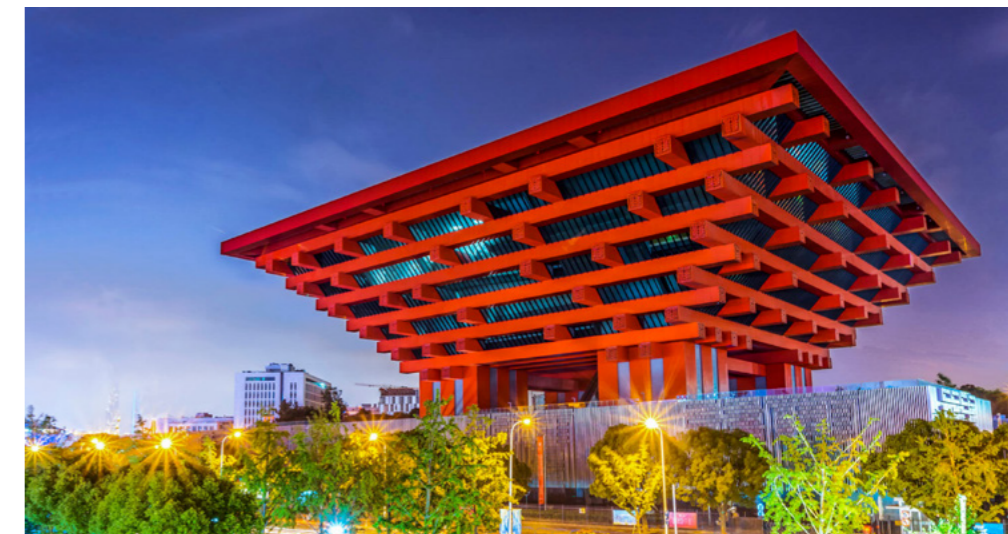
Shanghai Center, China



Beijing Daxing International Airport, China



Beijing National Stadium, China



China Pavilion at Expo 2020, China



AMERICA



Mato Grosso, Brazil



Rio Olympics Sites, Brazil

EUROPE



2009 World University Games Project, Serbia and Montenegro



Pelješac Bridge, Croatia

1915 Çanakkale Bridge, Turkey



Budapest-Belgrade Railway, Hungary and Serbia



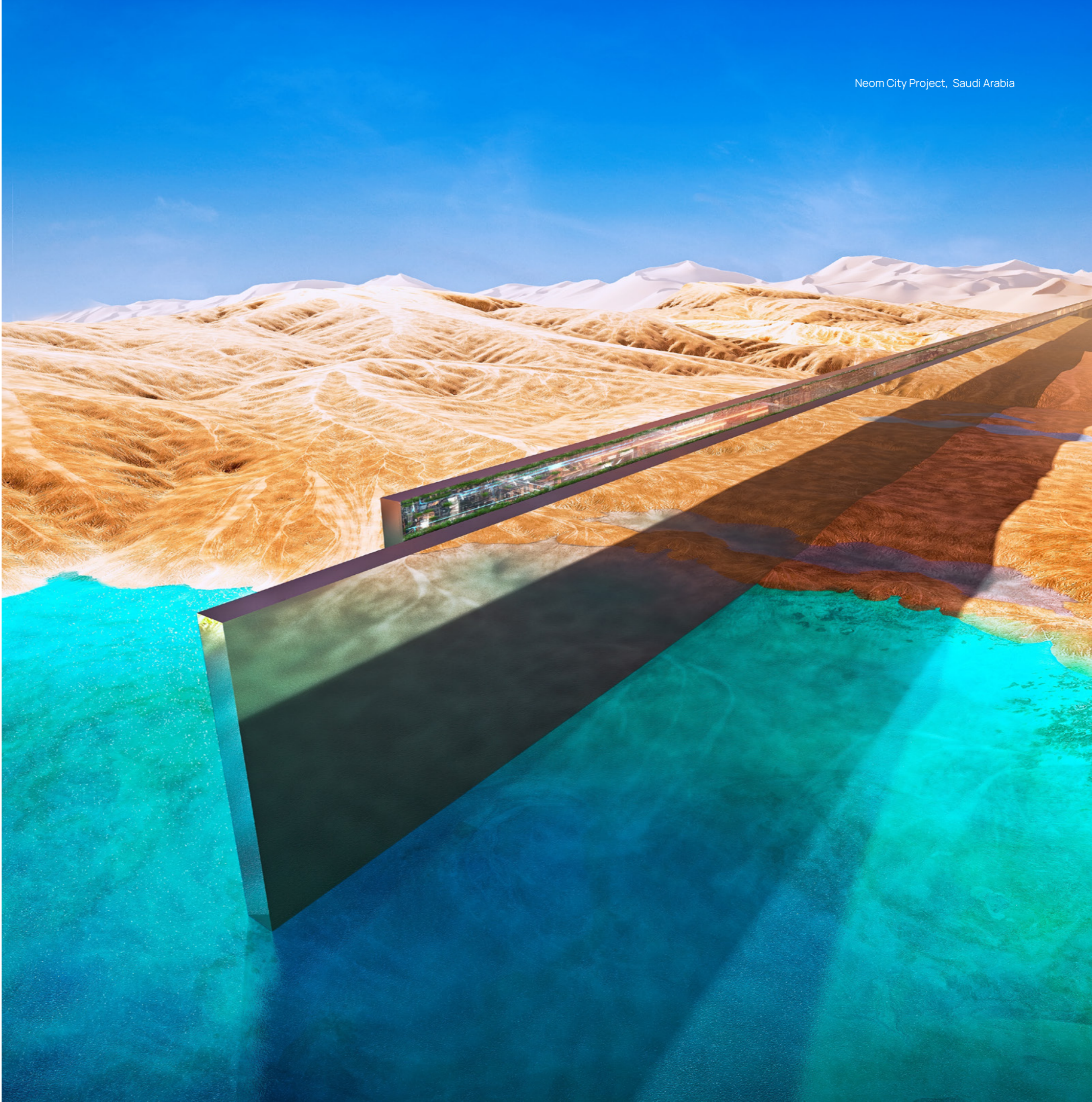
Istanbul Airport, Turkey

MIDDLE EAST

Neom City Project, Saudi Arabia



The Avenues Park, Bahrain



Al Janoub Stadium, Qatar



AFRICA



East-West Highway, Algeria



Green Point Stadium, South Africa



Adama Wind Farm II, Ethiopia



Merowe Dam, Sudan

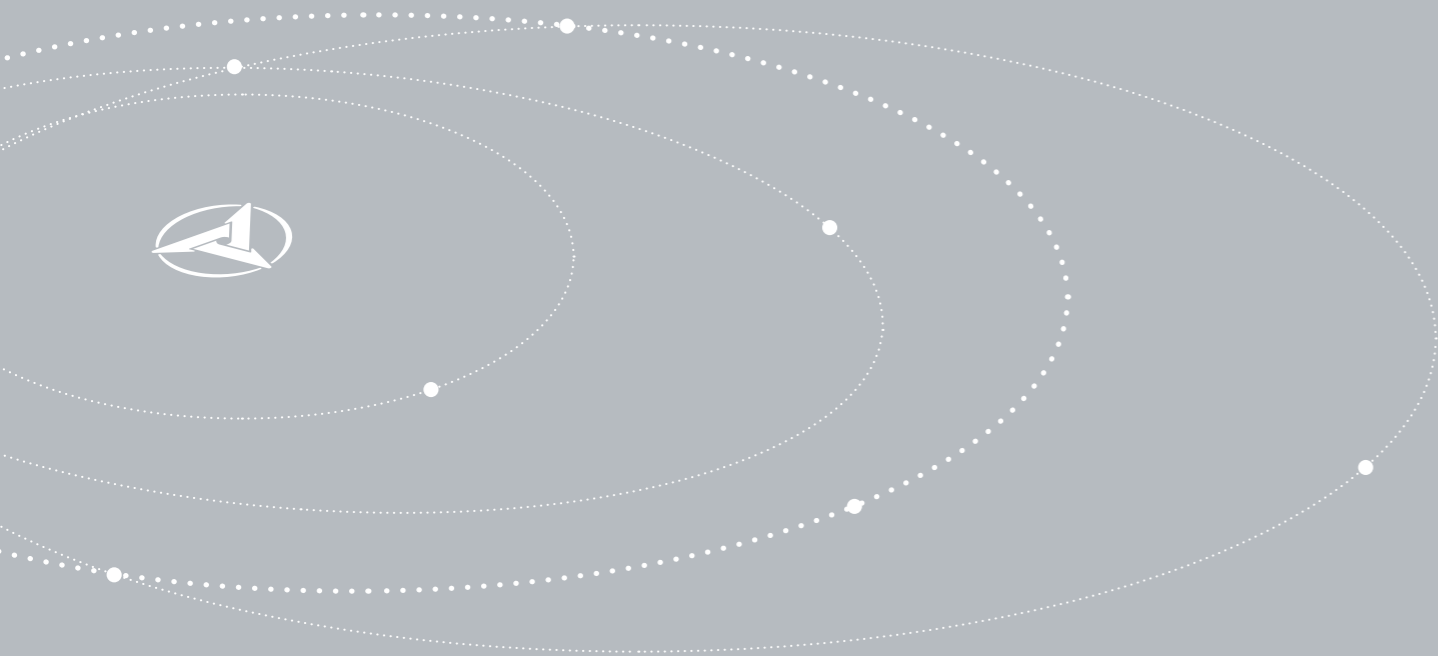


Mombasa-Nairobi Railway, Kenya



Dangote Refinery, Nigeria

SOCIAL RESPONSIBILITY



S
A
N
I
T
Y

Ongoing Aid Efforts in Times of Crisis

In February 2023, when a major earthquake struck Turkey, SANY swiftly dispatched a 12-person team with around 30 units of machines to the worst-hit region to aid in the earthquake response. In September, a 6.9-magnitude earthquake struck Morocco, resulting in 2,946 fatalities and leaving 5,674 injured. SANY, together with the Morocco dealer "Forges de Bazas" donated seven pieces of equipment to clear the path after the country was hit by the earthquake. The path, a lifeline from the Amizmiz to the affected area, is used to transport medicine, food, and other supplies.

To enhance rescue efficiency, SANY established a technical rescue team, exploring a man-machine-connected rescue approach. Simultaneously, SANY collaborated with local governments to provide professional machinery rescue training for grassroots rescue teams.





Nurturing Rural Education

Since 2007, with a donation of \$12 million to local education, SANY has established a SANY School in Lianyuan and provided subsidies to over ten thousand senior high school students to realize their dreams. In the realm of early childhood education, SANY initiated kindergartens in each village to narrow the educational gap. With improvements in basic education, SANY has shifted its focus to educational innovation based on local context. In 2022, SANY launched the "Dig and Dig Tinker Education" project, leveraging its construction machinery expertise to provide intellectual development programs for rural children. The project has expanded to over 300 pilot zones nationwide, benefiting more than 22,000 children and allowing them to experience the joy of learning through play.



Empowering Women in Mining Sector in South Africa

Nkwe Platinum and SANY Southern Africa started a week-long program and provided an entry-level excavator training program for six women from their mining communities. Through the program, the six trainees gained both theoretical knowledge and hands-on operation experience in lectures and practice classes.





Excavator Light Show Raises Money for Families in Need

On Christmas Eve 2020, SANY America held its first drive-by light show. Two SANY excavators decorated in lights were pulled by a lit-up flatbed along the streets, raising over \$5,000 in food for families in need.

The Dream Project of SANY Foundation

In rural areas, SANY Foundation helps talented students get the education they deserve. In 2014, SANY Foundation initiated the Dream Project with an annual investment of 400,000 USD to help students from underprivileged families acquire an equal chance of receiving good education and chasing after a better future.





Donation of Medical Supplies Across the World

During the worldwide outbreak of COVID-19 in 2020, SANY donated over 300 million medical masks to over 30 countries, including Italy, France, Germany, Japan, Austria, and Sweden, and others for fighting against the pandemic.

A German proverb was written on the box of the masks that SANY donated to Germany: "Mountains and valleys don't come together, but humans do." The quote means "Our destiny is closely connected in both good and hard times."

2020 Race Against the Pandemic

In January 2020, with the outbreak of the COVID-19 pandemic in China, SANY rushed to assist in the construction of Fire God Mountain hospital and Thunder God Mountain hospital in Wuhan. SANY promptly delivered 41 cranes, 8 concrete pumps, 22 excavators and over 40 service engineers to the site. They completed the construction project in 4 days, which originally would have taken 2 months, ensuring the delivery of the two hospitals in record time and making contributions to the fight against the pandemic.



SUSTAINABILITY



QUALITY CHANGES THE WORLD

SANNY





Sustainability at SANY

SANY contributes to the society by both providing quality products and fulfilling its corporate social responsibility, which is centered on achieving sustainable development of the industry, society and individuals.

Sustainability Strategy

We are at a critical moment in human history, where every one of us, by making choices today, can decide what the world we live in will be like tomorrow. As a responsible, visionary and aspiring global enterprise, SANY supports the UN 2030 Agenda for Sustainable Development. In decision making, we focus on global trends and challenges, international norms of responsible business behavior, and stakeholders' expectations.

Sustainability Framework

Carbon Neutrality

Under the background of a low-carbon future featuring a carbon emissions peak and carbon neutrality, SANY is now leading the wave of electrification in responding to the call for an electrical era that is widely echoed across the industry. SANY has launched more than 30 new energy products, covering three major energy supplement routes of pure electricity, battery swapping and hydrogen fuel.

Renewable Energy

SANY Renewable Energy explores the low-carbon development of the manufacturing industry through developing intelligent renewable-energy products covering wind power, photovoltaic power, hydrogen energy, and energy storage.

People

The Beijing SANY Foundation (SANY Foundation), initiated by SANY Group, was established on December 31, 2013 in the Beijing Municipal Civil Affairs Bureau. SANY Foundation holds the mission to promote "science and public welfare", by empowering the public good to fully realize its value, thus bringing real change to the world and building a vibrant, caring and trusting society.



QUALITY CHANGES THE WORLD



IOHQ



MySANY App



Follow us

SANY Group Co., Ltd., China