

*Thuidiopsis furfurosa* (Hook.f. & Wilson) M.Fleisch.



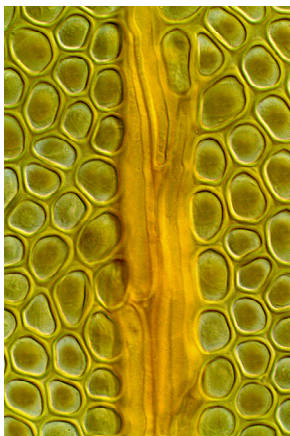
vegetative shoot  
5 mm



stem leaf outline, stem leaf apex, and paraphyllium  
0.25 mm (left), 50  $\mu\text{m}$ , 10  $\mu\text{m}$



margin upper leaf  
10  $\mu\text{m}$



costa midleaf  
10  $\mu\text{m}$



leaf basal angle  
50  $\mu\text{m}$