

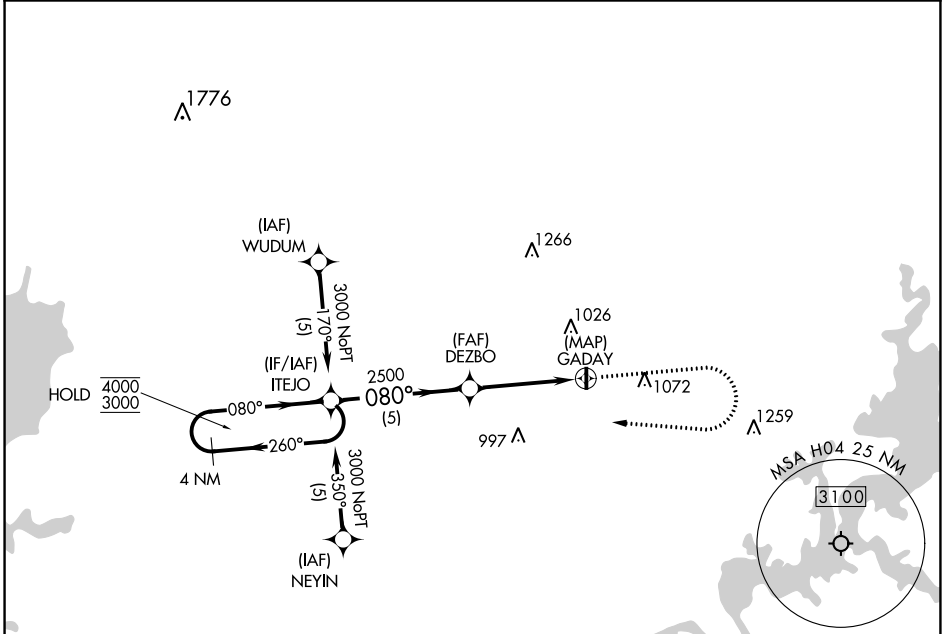
APP CRS <b>080°</b>	Rwy Idg TDZE Apt Elev	<b>N/A</b> <b>N/A</b> <b>695</b>
------------------------	-----------------------------	--

# RNAV (GPS)-A

VINITA MUNI (H04)

RNP APCH - GPS.	MISSED APPROACH: Climb to 1200 then climbing right turn to 3000 direct ITEJO and hold.
▼ ▲ NA Use Claremore altimeter setting.	

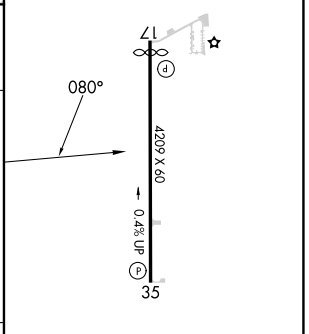
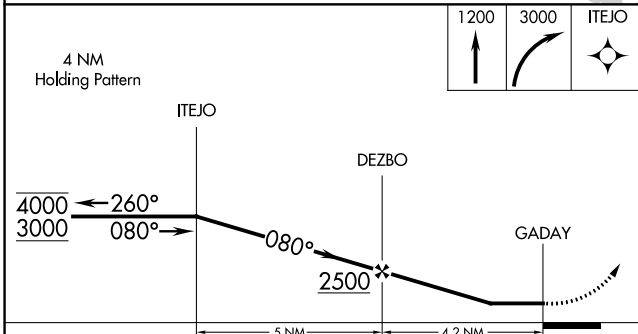
GCM AWOS-3P <b>119.925</b>	KANSAS CITY CENTER <b>128.6 282.325</b>	<b>122.9</b> (CTAF) <b>0</b>
-------------------------------	--	------------------------------



SC-1, 22 FEB 2024 to 21 MAR 2024

SC-1, 22 FEB 2024 to 21 MAR 2024

ELEV	695
------	-----



CATEGORY	A	B	C	D
CIRCLING	1460-1 765 (800-1)		NA	

MIRL Rwy 17-35 **0**