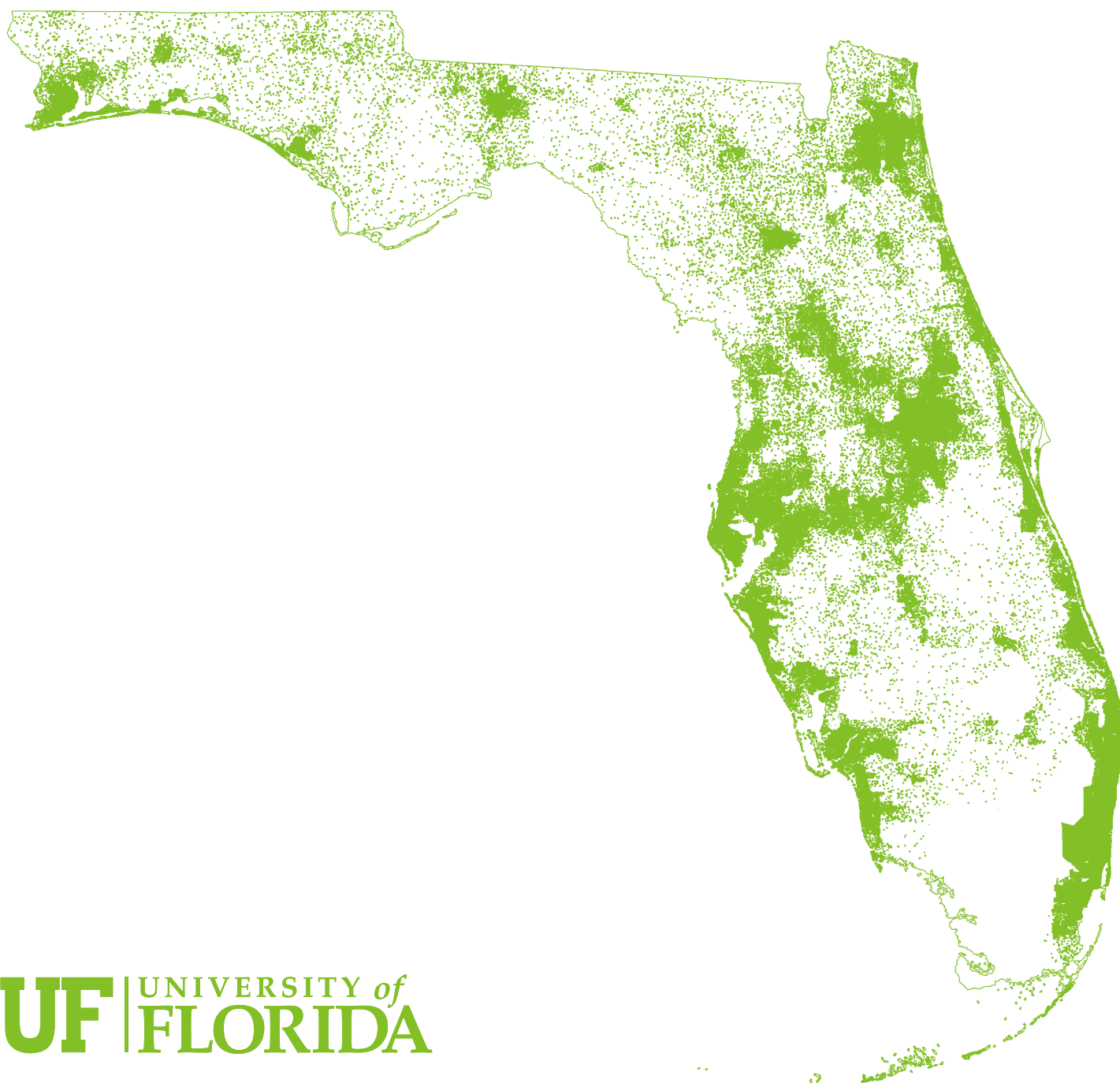


# Florida Population: Census Summary 2020



# **Florida Population: Census Summary 2020**

**Bureau of Economic and Business Research  
College of Liberal Arts and Sciences  
University of Florida  
720 SW 2<sup>nd</sup> Avenue, Suite 150  
P.O. Box 117148  
Gainesville, Florida 32611-7148**

**Phone: (352) 392-0171  
Fax: (888) 534-2404  
[www.bebr.ufl.edu](http://www.bebr.ufl.edu)**

Copyright © 2021 by the University of Florida

**University of Florida**  
W. Kent Fuchs, President

**College of Liberal Arts and Sciences**  
Dave Richardson, Dean

**Bureau of Economic and Business Research**  
Christopher McCarty, Director

**Population Program**  
Stefan Rayer, Population Program Director  
Richard Doty, GIS Coordinator/Research Demographer  
Suzanne Roulston-Doty, GIS Project Manager/Research Demographer  
Jason Teisinger, GIS Project Manager  
Ying Wang, Research Demographer

**BEBR** BUREAU OF  
ECONOMIC AND  
BUSINESS RESEARCH

**UF** | UNIVERSITY *of*  
**FLORIDA**

# Table of Contents

Table 1. Census Population Counts by County and City in Florida, April 1, 2020 and 2010 _____	8
Table 2. Census Population Counts by State and Region of the United States, 2020 and 2010 _____	23
Table 3. Components of Population Change for Counties in Florida, 2010 to 2020 _____	25
Table 4. Census Population Counts and Percent Change in Population by Decade for Counties in Florida, 1990 to 2020 _____	27
Table 5. Census Population Counts and Percent Change in Population Change by Decade for Metropolitan Statistical Areas in Florida, 1990 to 2020 _____	29
Table 6. Census Population Counts and Percent Change in Population by Decade for Regional Planning Councils in Florida, 1990 to 2020 _____	31
Table 7. Rank of Florida Counties by Population Size in 2020 and Population Distribution in 2020, 2010, 2000, and 1990 _____	33
Table 8. Rank of Florida Counties by Population Change, 2010 to 2020 _____	35
Figure 1. Population Change, 2010 to 2020 _____	36
Table 9. Rank of Florida Counties by Percent Change in Population, 2010 to 2020 _____	37
Figure 2. Percent Change in Population, 2010 to 2020 _____	38
Table 10. Rank of the Top 100 Cities in Florida by Population Size in 2020, 2010, and 2000 _____	39
Table 11. Rank of the Top 100 Cities in Florida by Population Change, 2010 to 2020 _____	41
Table 12. Rank of the Top 100 Cities in Florida by Percent Change in Population, 2010 to 2020 _____	42
Table 13. Population by Race and Hispanic Origin by County, 2020 _____	43
Figure 3. Hispanic Population as a Percent of Total Population, 2020 _____	45
Figure 4. Black Population as a Percent of Total Population, 2020 _____	46
Table 14. Population Per Square Mile for Florida Counties in 2020, 2010, and 2000 _____	47
Figure 5. Population Per Square Mile, 2020 _____	49
Appendix: Location of Florida Cities _____	50

# Florida Population: Census Summary 2020

Florida continues to be one of the most rapidly growing states in the nation. According to the 2020 Census, Florida's population was 21,538,187 on April 1, 2020, an increase of 2,736,855 since April 1, 2010. The 2010–2020 period was the fifth consecutive decade in which the Florida population grew by more than 2.7 million residents. Florida's numeric population increase during the past decade was the second largest of any state, trailing only Texas. Florida's percent increase (14.6%) was the ninth largest in the nation. Because of this rapid growth, Florida's share of the national population almost doubled over the past 50 years, from 3.3% in 1970 to 6.5% in 2020.

## State and Regional Trends

The 2020 Census confirmed the continuing population shift from the Midwest and Northeast to the South and West regions of the United States. The population of the United States was 331,449,281 on April 1, 2020, an increase of 22.7 million (7.4%) since 2010. Most of this increase occurred in the South and West. The South grew by 11.7 million (10.2%) and the West by 6.6 million (9.2%), while the Northeast grew by 2.3 million (4.1%) and the Midwest by only 2.1 million (3.1%). The South remains the most populous region of the country with 126,266,107 residents in 2020, followed by the West with 78,588,572, the Midwest with 68,985,454, and the Northeast with 57,609,148.

Texas had the largest numeric population increase of any state between 2010 and 2020, growing by 4.0 million residents. Florida and California also had large increases of 2.7 million and 2.3 million, respectively. Four states grew by more than 15% during the decade: Utah (18.4%), Idaho (17.3%), Texas (15.9%), and North Dakota (15.8%). Of the fourteen states with the growth rates above 10%, seven were in the West, six in the South, and one in the Midwest. All four of the states that increased by more than one million residents were located in the South and West. At the other end of the spectrum,

three states lost population during the decade (West Virginia, Illinois, and Mississippi), though their combined losses were less than 100,000.

## County Trends

Fifty counties in Florida experienced an increase in population between 2010 and 2020, and seventeen counties lost population over the decade. Thirteen of the state's 67 counties grew by more than 20% and 37 grew by more than the national growth rate of 7.4%. Four counties grew by more than 30% (Osceola, St. Johns, Sumter, and Walton), while another nine grew by 20%–30% (Lake, Orange, Santa Rosa, Manatee, Nassau, Lee, Pasco, Flagler, and Polk). These rapidly growing counties are found throughout the state, on both coasts and in the interior. The seventeen counties with declining populations were primarily located in the Florida Panhandle, in North-Central Florida, and in the South-Central interior of the state: Gulf, Hardee, Lafayette, Calhoun, Madison, Glades, Gadsden, Hamilton, Jackson, Liberty, Taylor, DeSoto, Jefferson, Putnam, Holmes, Okeechobee, and Bradford. This is an unusually high number of Florida counties experiencing population losses over a decade. For comparison, there were only two counties that lost population in the 2000s and 1980s, and from 1990 to 2000 all 67 Florida counties grew in population. Some of the population losses can be attributed to hurricane-related impacts or changes in the group quarters population, while others reflect low migration and/or deaths exceeding births. That said, the population declines from 2010 to 2020 were quite small overall, amounting to a population loss of under 20,000 persons for the seventeen counties combined.

In terms of numeric population growth, the largest increases occurred in counties located in Central and South Florida. Orange, Hillsborough, Miami-Dade, Broward, and Palm Beach each grew by more than 150,000 residents during the decade. Four other counties (Lee, Duval, Polk, and Osceola) grew by more than 100,000. More than half of the state's

population growth occurred in these nine counties. In contrast, fourteen counties gained fewer than 10,000 residents during the decade; like the seventeen counties that lost population, most of these are located in the Florida Panhandle, in North-Central Florida, and in the South-Central interior of the state.

### City Trends

Florida is a highly urbanized state. Almost 97% of Florida's population lived in metropolitan areas in 2020, and many others lived in small and medium sized towns in non-metropolitan counties. Only a small fraction of Florida's population may be truly classified as rural.

Florida's population growth from 2010 to 2020 was almost identical between incorporated places and unincorporated areas. The populations of incorporated cities, towns, and villages grew by 1,378,573 (14.6%), while the populations of unincorporated areas grew by 1,358,282 (14.5%). Just over half of Florida's residents currently live in incorporated cities, towns, and villages (50.3%), the same proportion as in 2010.

Cities, towns, and villages show much more variation in population growth rates than counties do. Of Florida's 409 incorporated places in existence in 2010 and 2020, 6 more than doubled in size over the decade; 6 grew by 50%–100%; 39 grew by 25%–50%; 123 grew by 10%–25%; 122 grew by less than 10%; and 113 lost population. Two new cities (Estero and Westlake) and one new village (Indiantown) were established during the decade; two cities (Hastings and Islandia) lost their official status as incorporated places.

Cities, towns, and villages also vary a great deal in terms of population size, ranging from 15 residents in Marineland to 949,611 in Jacksonville. Twenty-two incorporated places had more than 100,000 residents in 2020; 36 had 50,000–100,000; 110 had 10,000–49,999; 104 had 2,500–9,999; 56 had 1,000–2,499; and 84 had less than 1,000. Although large cities account for the majority of the population living in incorporated places in Florida, small towns account for the majority of such places.

### Components of Growth

There are only four components of population growth: births, deaths, in-migration, and out-migration. Births and in-migration raise the size of a population, whereas deaths and out-migration lower it. The overall growth (or decline) of the population of a given area is thus determined by the numbers of births, deaths, in-migrants, and out-migrants.

Florida had almost 2.2 million births and just over 1.9 million deaths between 2010 and 2020. The difference between births and deaths is called "natural increase." During the past decade, natural increase was 288,471 and accounted for 10.5% of Florida's total population growth. The remainder of the state's growth was caused by net migration (i.e., the excess of in-migrants over out-migrants). Net migration into Florida was about 2.45 million between 2010 and 2020, accounting for 89.5% of the state's growth. This stands in sharp contrast to the experience in many states, where net migration is small or even negative.

Components of growth vary a great deal from county to county. Net migration was positive in 52 counties and negative in 15 counties during the past decade. Net migration was greater than 100,000 in seven counties: Orange (197,871), Palm Beach (167,984), Hillsborough (162,511), Lee (143,551), Broward (126,109), Polk (112,283), and Pasco (106,840). Net migration was between 10,000 and 99,999 in 28 counties and positive but less than 10,000 in 17 counties.

Natural increase also varied substantially from county to county, ranging from 120,456 in Miami-Dade to -32,988 in Pinellas. Thirty-one counties had positive natural increase (i.e., more births than deaths) while 36 had negative natural increase (i.e., more deaths than births). Counties with negative natural increase tend to have relatively large proportions of older residents; consequently, they have relatively high death rates and low birth rates.

Population growth (or decline) can also be caused by changes in geographic boundaries. Although boundaries for Florida and its counties have not changed significantly since 1930, boundaries for many cities, towns, villages, and unincorporated areas have changed because of annexations, de-annexations, new incorporations, and the dissolution of previously incorporated places. For this reason, some of the changes in population size observed for cities, towns, villages, and unincorporated areas between 2010 and 2020 were caused by shifts in geographic boundaries rather than by natural increase and net migration.

## Summary of Contents

Table 1 of this report shows the populations of each county and incorporated city, town, and village in Florida in 2020 and 2010, along with numeric and percent changes over the decade. Table 2 shows the population of the nation, each state (including the District of Columbia), and the four Census Bureau-designated regions. Table 3 shows the components of growth (births, deaths, and net migration) for each county and the state between 2010 and 2020. Tables 4–6 show populations in 2020, 2010, 2000, and 1990, and decade growth rates for counties, Metropolitan Statistical Areas, and Regional Planning Councils, respectively. Figures 1 and 2 are maps showing numeric and percent changes in total population for each county between 2010 and 2020.

Table 7 shows county populations ranked by population size in 2020 and each county's share of the state population in 2020, 2010, 2000, and 1990. Tables 8 and 9 show counties ranked according to numeric and percent changes in total population between 2010 and 2020.

The next three tables show the top 100 cities in Florida ranked by population size in 2020 (Table 10), numeric increase between 2010 and 2020 (Table 11), and percent increase between 2010 and 2020 (Table 12).

Table 13 shows the population by race and Hispanic origin in 2020 for the state and each county. Figures 3 and 4 are maps showing the Hispanic and African American populations, respectively, as a percent of total

population for each county. Table 14 shows counties ranked by population density (persons per square mile) in 2020, 2010, and 2000. Figure 5 is a map showing the population density of each county in 2020.

The appendix provides an alphabetical list of each incorporated city, town, and village in Florida and the county in which each is located.

## A Note About the Data

Most of the data shown in this report were derived from population counts conducted every 10 years by the U.S. Census Bureau. The decennial census is the most comprehensive and accurate source of population data in the United States and is used by public and private sector decision makers for a wide variety of purposes (e.g., budgeting, planning, site location, marketing, and revenue sharing). However, the census is not error-free. Errors can be caused by missed households, refusal to respond, recording errors, sampling errors, geographic assignment errors, duplication errors, coding and data-processing errors, and the incorrect imputation of missing data. Census errors often balance each other out, especially at higher levels of geography.

The accuracy of census counts has improved over the years. The net national undercount was estimated as 5.4% in 1940, the first year formal undercount estimates were calculated. The net undercount declined to 4.1% in 1950, 3.1% in 1960, 2.7% in 1970, and 1.2% in 1980; it rose to 1.7% in 1990, before declining again to 0.1% in 2000. The 2010 Census showed a minute overcount of 0.01%. In Florida, the net undercount was estimated as 2.0% in 1990, 1.2% in 2000, and 0.45% in 2010. Estimates of the net undercount in 2020 are not yet available.

Errors in total population counts are small in most cities and counties but can quite large sometimes. For example, the 2000 Census initially counted 11,057 residents in Franklin County and 13,332 in Gulf County. However, it was subsequently discovered that a prison located in Gulf County was mistakenly counted in Franklin County. When this error was corrected, it reduced Franklin County's population to



9,829 and raised Gulf County's population to 14,560. Although errors of this magnitude are infrequent, smaller errors occur frequently. The numbers for 1990, 2000, and 2010 shown in this report incorporate all postcensal corrections issued by the Census Bureau; consequently, some numbers differ from those published previously.

The 2020 Census also applied a new formally private disclosure avoidance system termed "Differential Privacy," which introduced noise into the census counts. Earlier censuses also included privacy protections in the form of data swapping, table suppression, and imputation. As a consequence, the published census counts are not necessarily the same as enumerated, except for a small number of variables that are "invariant," i.e. published as enumerated with no noise infusion. In the 2020 Census, the following variables were invariant at these levels of geography and higher: total population at the state level; total housing units at the census block level; and the number of group quarters facilities by type at the census block level.

The 2020 Census data shown in this report were based on the redistricting data released by the U.S. Census Bureau during the summer of 2021 (P.L. 94-171). They have not been adjusted to account for undercount (or overcount). In addition, they have not yet incorporated the results of the postcensal count resolution program. Some of these numbers will be corrected during the coming months and years, but most of these corrections will be fairly small.

The population data shown in this report refer solely to permanent residents. According to Census Bureau guidelines, a person is counted as an inhabitant of his or her usual place of residence, or the place where that person lives and sleeps most of the time. Temporary residents such as tourists and snowbirds are thus excluded from the Florida data, being counted as residents of other states or countries. If they reside in Florida on a permanent basis, however, persons from foreign countries (except those representing foreign governments) are counted as Florida residents regardless of their legal status. College students, military personnel, and inmates in penal institutions are counted as residents of the cities and counties where they live while in college, the military, or prison, not as residents of their "hometowns."

Data on births and deaths in Florida and its counties were provided by the Florida Department of Health, Bureau of Vital Statistics; we adjusted the calendar year data to conform to the period April 1, 2010 to April 1, 2020. Estimates of net migration were developed by subtracting natural increase from total population change during the decade. All the other data shown in this report were provided by the U.S. Census Bureau.

### **Acknowledgement**

Funding for this report was provided by the Florida Legislature.



**Table 1. Census Population Counts by County and City in Florida, April 1, 2020 and 2010**

County, City, and State	April 1, 2020	April 1, 2010	Total Change	Percent Change
<b>Alachua</b>	278,468	247,336	31,132	12.6
Alachua	10,574	9,059	1,515	16.7
Archer	1,140	1,118	22	2.0
Gainesville*	141,085	124,476	16,609	13.3
Hawthorne	1,478	1,417	61	4.3
High Springs	6,215	5,350	865	16.2
La Crosse	316	360	-44	-12.2
Micanopy	648	600	48	8.0
Newberry	7,342	4,950	2,392	48.3
Waldo	846	1,015	-169	-16.7
UNINCORPORATED*	108,824	98,991	9,833	9.9
<b>Baker</b>	28,259	27,115	1,144	4.2
Glen St. Mary	463	437	26	5.9
Macclenny	7,304	6,374	930	14.6
UNINCORPORATED	20,492	20,304	188	0.9
<b>Bay</b>	175,216	168,852	6,364	3.8
Callaway	13,045	14,405	-1,360	-9.4
Lynn Haven	18,695	18,493	202	1.1
Mexico Beach	916	1,072	-156	-14.6
Panama City*	32,939	35,505	-2,566	-7.2
Panama City Beach	18,094	12,018	6,076	50.6
Parker	4,010	4,317	-307	-7.1
Springfield	8,075	8,903	-828	-9.3
UNINCORPORATED*	79,442	74,139	5,303	7.2
<b>Bradford</b>	28,303	28,520	-217	-0.8
Brooker	322	338	-16	-4.7
Hampton	432	500	-68	-13.6
Lawtey	636	730	-94	-12.9
Starke	5,796	5,449	347	6.4
UNINCORPORATED	21,117	21,503	-386	-1.8
<b>Brevard</b>	606,612	543,376	63,236	11.6
Cape Canaveral	9,972	9,912	60	0.6
Cocoa	19,041	17,140	1,901	11.1
Cocoa Beach	11,354	11,231	123	1.1
Grant-Valkaria	4,509	3,850	659	17.1
Indialantic	3,010	2,720	290	10.7
Indian Harbour Beach	9,019	8,225	794	9.7
Malabar	2,949	2,757	192	7.0
Melbourne*	84,678	76,205	8,473	11.1
Melbourne Beach	3,231	3,101	130	4.2
Melbourne Village	681	662	19	2.9

**Table 1. Census Population Counts by County and City in Florida, April 1, 2020 and 2010**

(Continued)

County, City, and State	April 1, 2020	April 1, 2010	Total Change	Percent Change
<b>Brevard (Continued)</b>				
Palm Bay	119,760	103,190	16,570	16.1
Palm Shores	1,200	900	300	33.3
Rockledge	27,678	24,926	2,752	11.0
Satellite Beach	11,226	10,109	1,117	11.0
Titusville	48,789	43,761	5,028	11.5
West Melbourne	25,924	18,355	7,569	41.2
UNINCORPORATED*	223,591	206,332	17,259	8.4
<b>Broward</b>	1,944,375	1,748,066	196,309	11.2
Coconut Creek	57,833	52,909	4,924	9.3
Cooper City	34,401	28,547	5,854	20.5
Coral Springs	134,394	121,096	13,298	11.0
Dania Beach	31,723	29,639	2,084	7.0
Davie	105,691	91,992	13,699	14.9
Deerfield Beach	86,859	75,018	11,841	15.8
Fort Lauderdale	182,760	165,521	17,239	10.4
Hallandale Beach	41,217	37,113	4,104	11.1
Hillsboro Beach	1,987	1,875	112	6.0
Hollywood	153,067	140,768	12,299	8.7
Lauderdale-By-The-Sea	6,198	6,056	142	2.3
Lauderdale Lakes	35,954	32,593	3,361	10.3
Lauderhill	74,482	66,887	7,595	11.4
Lazy Lake	33	24	9	37.5
Lighthouse Point	10,486	10,344	142	1.4
Margate	58,712	53,284	5,428	10.2
Miramar	134,721	122,041	12,680	10.4
North Lauderdale	44,794	41,023	3,771	9.2
Oakland Park	44,229	41,363	2,866	6.9
Parkland	34,670	23,962	10,708	44.7
Pembroke Park	6,260	6,102	158	2.6
Pembroke Pines*	171,178	154,019	17,159	11.1
Plantation	91,750	84,955	6,795	8.0
Pompano Beach	112,046	99,845	12,201	12.2
Sea Ranch Lakes	540	670	-130	-19.4
Southwest Ranches	7,607	7,345	262	3.6
Sunrise	97,335	84,439	12,896	15.3
Tamarac	71,897	60,427	11,470	19.0
Weston	68,107	65,333	2,774	4.2
West Park	15,130	14,156	974	6.9
Wilton Manors	11,426	11,632	-206	-1.8
UNINCORPORATED*	16,888	17,088	-200	-1.2
<b>Calhoun</b>	13,648	14,625	-977	-6.7
Altha	496	536	-40	-7.5

**Table 1. Census Population Counts by County and City in Florida, April 1, 2020 and 2010**

(Continued)

County, City, and State	April 1, 2020	April 1, 2010	Total Change	Percent Change
<b>Calhoun (Continued)</b>				
Blountstown	2,266	2,514	-248	-9.9
UNINCORPORATED	10,886	11,575	-689	-6.0
<b>Charlotte</b>				
Punta Gorda	186,847	159,978	26,869	16.8
UNINCORPORATED	19,471	16,641	2,830	17.0
	167,376	143,337	24,039	16.8
<b>Citrus</b>				
Crystal River	153,843	141,236	12,607	8.9
Inverness	3,396	3,108	288	9.3
UNINCORPORATED	7,543	7,210	333	4.6
	142,904	130,918	11,986	9.2
<b>Clay</b>				
Green Cove Springs	218,245	190,865	27,380	14.3
Keystone Heights	9,786	6,908	2,878	41.7
Orange Park	1,446	1,350	96	7.1
Penney Farms	9,089	8,412	677	8.0
UNINCORPORATED	821	749	72	9.6
	197,103	173,446	23,657	13.6
<b>Collier</b>				
Everglades	375,752	321,520	54,232	16.9
Marco Island	352	400	-48	-12.0
Naples	15,760	16,413	-653	-4.0
UNINCORPORATED	19,115	19,537	-422	-2.2
	340,525	285,170	55,355	19.4
<b>Columbia</b>				
Fort White	69,698	67,531	2,167	3.2
Lake City	618	567	51	9.0
UNINCORPORATED	12,329	12,046	283	2.3
	56,751	54,918	1,833	3.3
<b>DeSoto</b>				
Arcadia	33,976	34,862	-886	-2.5
UNINCORPORATED	7,420	7,637	-217	-2.8
	26,556	27,225	-669	-2.5
<b>Dixie</b>				
Cross City	16,759	16,422	337	2.1
Horseshoe Beach	1,689	1,728	-39	-2.3
UNINCORPORATED	165	169	-4	-2.4
	14,905	14,525	380	2.6
<b>Duval</b>				
Atlantic Beach	995,567	864,263	131,304	15.2
Baldwin	13,513	12,655	858	6.8
Jacksonville	1,396	1,425	-29	-2.0
Jacksonville Beach	949,611	821,784	127,827	15.6
	23,830	21,362	2,468	11.6

**Table 1. Census Population Counts by County and City in Florida, April 1, 2020 and 2010**

(Continued)

County, City, and State	April 1, 2020	April 1, 2010	Total Change	Percent Change
<b>Duval</b> (Continued)				
Neptune Beach	7,217	7,037	180	2.6
<b>Escambia</b>	321,905	297,619	24,286	8.2
Century	1,713	1,698	15	0.9
Pensacola	54,312	51,923	2,389	4.6
UNINCORPORATED	265,880	243,998	21,882	9.0
<b>Flagler</b>	115,378	95,696	19,682	20.6
Beverly Beach	474	338	136	40.2
Bunnell	3,276	2,676	600	22.4
Flagler Beach (part)	5,088	4,424	664	15.0
Marineland (part)	12	16	-4	-25.0
Palm Coast	89,258	75,180	14,078	18.7
UNINCORPORATED	17,270	13,062	4,208	32.2
<b>Franklin</b>	12,451	11,549	902	7.8
Apalachicola	2,341	2,231	110	4.9
Carrabelle	2,606	2,778	-172	-6.2
UNINCORPORATED	7,504	6,540	964	14.7
<b>Gadsden</b>	43,826	46,389	-2,563	-5.5
Chattahoochee	2,955	3,652	-697	-19.1
Greensboro	461	602	-141	-23.4
Gretna	1,357	1,460	-103	-7.1
Havana	1,753	1,754	-1	-0.1
Midway	3,537	3,004	533	17.7
Quincy	7,970	7,972	-2	0.0
UNINCORPORATED	25,793	27,945	-2,152	-7.7
<b>Gilchrist</b>	17,864	16,939	925	5.5
Bell	518	456	62	13.6
Fanning Springs (part)	478	278	200	71.9
Trenton	2,015	1,999	16	0.8
UNINCORPORATED	14,853	14,206	647	4.6
<b>Glades</b>	12,126	12,884	-758	-5.9
Moore Haven	1,566	1,680	-114	-6.8
UNINCORPORATED	10,560	11,204	-644	-5.7
<b>Gulf</b>	14,192	15,863	-1,671	-10.5
Port St. Joe	3,357	3,445	-88	-2.6
Wewahitchka	2,074	1,981	93	4.7
UNINCORPORATED	8,761	10,437	-1,676	-16.1

**Table 1. Census Population Counts by County and City in Florida, April 1, 2020 and 2010**

(Continued)

County, City, and State	April 1, 2020	April 1, 2010	Total Change	Percent Change
<b>Hamilton</b>	14,004	14,799	-795	-5.4
Jasper	3,621	4,546	-925	-20.3
Jennings	749	878	-129	-14.7
White Springs	740	777	-37	-4.8
UNINCORPORATED	8,894	8,598	296	3.4
<b>Hardee</b>	25,327	27,731	-2,404	-8.7
Bowling Green	2,405	2,930	-525	-17.9
Wauchula	4,900	5,001	-101	-2.0
Zolfo Springs	1,737	1,827	-90	-4.9
UNINCORPORATED	16,285	17,973	-1,688	-9.4
<b>Hendry</b>	39,619	39,140	479	1.2
Clewiston	7,327	7,155	172	2.4
LaBelle	4,966	4,640	326	7.0
UNINCORPORATED	27,326	27,345	-19	-0.1
<b>Hernando</b>	194,515	172,778	21,737	12.6
Brooksville	8,890	7,719	1,171	15.2
Weeki Wachee	16	12	4	33.3
UNINCORPORATED	185,609	165,047	20,562	12.5
<b>Highlands</b>	101,235	98,786	2,449	2.5
Avon Park	9,658	8,836	822	9.3
Lake Placid	2,360	2,223	137	6.2
Sebring	10,729	10,491	238	2.3
UNINCORPORATED	78,488	77,236	1,252	1.6
<b>Hillsborough</b>	1,459,762	1,229,226	230,536	18.8
Plant City	39,764	34,721	5,043	14.5
Tampa	384,959	335,709	49,250	14.7
Temple Terrace	26,690	24,541	2,149	8.8
UNINCORPORATED	1,008,349	834,255	174,094	20.9
<b>Holmes</b>	19,653	19,927	-274	-1.4
Bonifay	2,759	2,793	-34	-1.2
Esto	341	364	-23	-6.3
Noma	208	211	-3	-1.4
Ponce de Leon	504	598	-94	-15.7
Westville	261	289	-28	-9.7
UNINCORPORATED	15,580	15,672	-92	-0.6
<b>Indian River</b>	159,788	138,028	21,760	15.8
Fellsmere	4,834	5,197	-363	-7.0
Indian River Shores	4,241	3,901	340	8.7

**Table 1. Census Population Counts by County and City in Florida, April 1, 2020 and 2010**

(Continued)

County, City, and State	April 1, 2020	April 1, 2010	Total Change	Percent Change
<b>Indian River (Continued)</b>				
Orchid	516	415	101	24.3
Sebastian	25,054	21,929	3,125	14.3
Vero Beach*	16,354	15,223	1,131	7.4
UNINCORPORATED*	108,789	91,363	17,426	19.1
<b>Jackson</b>				
Alford	47,319	49,746	-2,427	-4.9
Bascom	484	489	-5	-1.0
Campbellton	87	121	-34	-28.1
Cottondale	191	230	-39	-17.0
Graceville	848	933	-85	-9.1
Grand Ridge	2,153	2,278	-125	-5.5
Greenwood	882	892	-10	-1.1
Jacob City	539	686	-147	-21.4
Malone	217	250	-33	-13.2
Marianna	1,959	2,088	-129	-6.2
Sneads	6,245	6,102	143	2.3
UNINCORPORATED	1,699	1,849	-150	-8.1
UNINCORPORATED	32,015	33,828	-1,813	-5.4
<b>Jefferson</b>				
Monticello	14,510	14,761	-251	-1.7
UNINCORPORATED	2,589	2,506	83	3.3
UNINCORPORATED	11,921	12,255	-334	-2.7
<b>Lafayette</b>				
Mayo	8,226	8,870	-644	-7.3
UNINCORPORATED	1,055	1,237	-182	-14.7
UNINCORPORATED	7,171	7,633	-462	-6.1
<b>Lake*</b>				
Astatula	383,956	297,047	86,909	29.3
Clermont	1,889	1,810	79	4.4
Eustis	43,021	28,742	14,279	49.7
Fruitland Park	23,189	18,558	4,631	25.0
Groveland	8,325	4,078	4,247	104.1
Howey-in-the-Hills	18,505	8,729	9,776	112.0
Lady Lake	1,643	1,098	545	49.6
Leesburg	15,970	13,926	2,044	14.7
Mascotte	27,000	20,117	6,883	34.2
Minneola	6,609	5,101	1,508	29.6
Montverde	13,843	9,403	4,440	47.2
Mount Dora	1,655	1,463	192	13.1
Tavares	16,341	12,370	3,971	32.1
Umatilla	19,003	13,951	5,052	36.2
UNINCORPORATED*	3,685	3,456	229	6.6
UNINCORPORATED*	183,278	154,245	29,033	18.8

**Table 1. Census Population Counts by County and City in Florida, April 1, 2020 and 2010**

(Continued)

County, City, and State	April 1, 2020	April 1, 2010	Total Change	Percent Change
<b>Lee</b>	760,822	618,754	142,068	23.0
Bonita Springs*	53,644	43,857	9,787	22.3
Cape Coral	194,016	154,305	39,711	25.7
Estero**	36,939	0	36,939	(X)
Fort Myers	86,395	62,298	24,097	38.7
Fort Myers Beach	5,582	6,277	-695	-11.1
Sanibel	6,382	6,469	-87	-1.3
UNINCORPORATED*	377,864	345,548	32,316	9.4
<b>Leon</b>	292,198	275,487	16,711	6.1
Tallahassee	196,169	181,376	14,793	8.2
UNINCORPORATED	96,029	94,111	1,918	2.0
<b>Levy</b>	42,915	40,801	2,114	5.2
Bronson	1,140	1,113	27	2.4
Cedar Key	687	702	-15	-2.1
Chiefland	2,316	2,245	71	3.2
Fanning Springs (part)	704	486	218	44.9
Inglis	1,476	1,325	151	11.4
Otter Creek	108	134	-26	-19.4
Williston	2,976	2,768	208	7.5
Yankeetown	588	502	86	17.1
UNINCORPORATED	32,920	31,526	1,394	4.4
<b>Liberty</b>	7,974	8,365	-391	-4.7
Bristol	918	996	-78	-7.8
UNINCORPORATED	7,056	7,369	-313	-4.2
<b>Madison</b>	17,968	19,224	-1,256	-6.5
Greenville	746	843	-97	-11.5
Lee	375	352	23	6.5
Madison*	2,912	3,049	-137	-4.5
UNINCORPORATED*	13,935	14,980	-1,045	-7.0
<b>Manatee</b>	399,710	322,833	76,877	23.8
Anna Maria	968	1,503	-535	-35.6
Bradenton	55,698	49,546	6,152	12.4
Bradenton Beach	908	1,171	-263	-22.5
Holmes Beach	3,010	3,836	-826	-21.5
Longboat Key (part)	2,746	2,398	348	14.5
Palmetto	13,323	12,606	717	5.7
UNINCORPORATED	323,057	251,773	71,284	28.3
<b>Marion*</b>	375,908	331,303	44,605	13.5
Belleview	5,413	4,492	921	20.5



**Table 1. Census Population Counts by County and City in Florida, April 1, 2020 and 2010**

(Continued)

County, City, and State	April 1, 2020	April 1, 2010	Total Change	Percent Change
<b>Marion* (Continued)</b>				
Dunnellon	1,928	1,733	195	11.3
McIntosh	463	452	11	2.4
Ocala	63,591	56,315	7,276	12.9
Reddick	449	506	-57	-11.3
UNINCORPORATED*	304,064	267,805	36,259	13.5
<b>Martin</b>				
Indiantown***	158,431	146,318	12,113	8.3
Jupiter Island	6,560	0	6,560	(X)
Ocean Breeze	804	817	-13	-1.6
Sewall's Point	301	355	-54	-15.2
Stuart	1,991	1,996	-5	-0.3
UNINCORPORATED	17,425	15,593	1,832	11.7
	131,350	127,557	3,793	3.0
<b>Miami-Dade*</b>				
Aventura	2,701,767	2,496,457	205,310	8.2
Bal Harbour	40,242	35,762	4,480	12.5
Bay Harbor Islands	3,093	2,513	580	23.1
Biscayne Park	5,922	5,628	294	5.2
Coral Gables*	3,117	3,055	62	2.0
Cutler Bay	49,248	46,776	2,472	5.3
Doral*	45,425	40,286	5,139	12.8
El Portal	75,874	45,709	30,165	66.0
Florida City	1,986	2,325	-339	-14.6
Golden Beach	13,085	11,245	1,840	16.4
Hialeah*	961	919	42	4.6
Hialeah Gardens	223,109	224,667	-1,558	-0.7
Homestead*	23,068	21,744	1,324	6.1
Indian Creek	80,737	60,509	20,228	33.4
Islandia****	84	86	-2	-2.3
Key Biscayne	0	18	-18	(X)
Medley	14,809	12,344	2,465	20.0
Miami*	1,056	838	218	26.0
Miami Beach*	442,241	399,508	42,733	10.7
Miami Gardens*	82,890	87,778	-4,888	-5.6
Miami Lakes	111,640	107,166	4,474	4.2
Miami Shores	30,467	29,361	1,106	3.8
Miami Springs	11,567	10,493	1,074	10.2
North Bay Village	13,859	13,809	50	0.4
North Miami*	8,159	7,137	1,022	14.3
North Miami Beach	60,191	58,912	1,279	2.2
Opa-locka	43,676	41,523	2,153	5.2
Palmetto Bay*	16,463	15,219	1,244	8.2
Pinecrest	24,439	23,408	1,031	4.4
	18,388	18,223	165	0.9

**Table 1. Census Population Counts by County and City in Florida, April 1, 2020 and 2010**

(Continued)

County, City, and State	April 1, 2020	April 1, 2010	Total Change	Percent Change
<b>Miami-Dade*</b> (Continued)				
South Miami	12,026	11,657	369	3.2
Sunny Isles Beach	22,342	20,832	1,510	7.2
Surfside	5,689	5,744	-55	-1.0
Sweetwater	19,363	13,499	5,864	43.4
Virginia Gardens	2,364	2,375	-11	-0.5
West Miami	7,233	5,965	1,268	21.3
UNINCORPORATED*	1,186,954	1,109,424	77,530	7.0
<b>Monroe</b>				
Islamorada, Village of Islands	82,874	73,090	9,784	13.4
Key Colony Beach	7,107	6,119	988	16.1
Key West	790	797	-7	-0.9
Layton	26,444	24,649	1,795	7.3
Marathon	210	184	26	14.1
UNINCORPORATED	9,689	8,297	1,392	16.8
	38,634	33,044	5,590	16.9
<b>Nassau</b>				
Callahan	90,352	73,314	17,038	23.2
Fernandina Beach	1,526	1,123	403	35.9
Hilliard	13,052	11,487	1,565	13.6
UNINCORPORATED	2,967	3,086	-119	-3.9
	72,807	57,618	15,189	26.4
<b>Okaloosa</b>				
Cinco Bayou	211,668	180,822	30,846	17.1
Crestview	457	383	74	19.3
Destin	27,134	20,978	6,156	29.3
Fort Walton Beach	13,931	12,305	1,626	13.2
Laurel Hill	20,922	19,507	1,415	7.3
Mary Esther	584	537	47	8.8
Niceville	3,982	3,851	131	3.4
Shalimar	15,772	12,749	3,023	23.7
Valparaiso	737	717	20	2.8
UNINCORPORATED	4,752	5,036	-284	-5.6
	123,397	104,759	18,638	17.8
<b>Okeechobee</b>				
Okeechobee	39,644	39,996	-352	-0.9
UNINCORPORATED	5,254	5,621	-367	-6.5
	34,390	34,375	15	0.0
<b>Orange</b>				
Apopka	1,429,908	1,145,956	283,952	24.8
Bay Lake	54,873	41,542	13,331	32.1
Belle Isle	29	47	-18	-38.3
Eatonville	7,032	5,988	1,044	17.4
Edgewood	2,349	2,159	190	8.8
	2,685	2,503	182	7.3

**Table 1. Census Population Counts by County and City in Florida, April 1, 2020 and 2010**

(Continued)

County, City, and State	April 1, 2020	April 1, 2010	Total Change	Percent Change
<b>Orange (Continued)</b>				
Lake Buena Vista	24	10	14	140.0
Maitland	19,543	15,751	3,792	24.1
Oakland	3,516	2,538	978	38.5
Ocoee	47,295	35,579	11,716	32.9
Orlando	307,573	238,300	69,273	29.1
Windermere	3,030	2,462	568	23.1
Winter Garden	46,964	34,568	12,396	35.9
Winter Park	29,795	27,852	1,943	7.0
UNINCORPORATED	905,200	736,657	168,543	22.9
<b>Osceola</b>				
Kissimmee	388,656	268,685	119,971	44.7
St. Cloud	79,226	59,682	19,544	32.7
UNINCORPORATED	58,964	35,183	23,781	67.6
<b>Palm Beach</b>				
Atlantis	1,492,191	1,320,134	172,057	13.0
Belle Glade	2,142	2,005	137	6.8
Boca Raton	16,698	17,467	-769	-4.4
Boynton Beach	97,422	84,392	13,030	15.4
Briny Breezes	80,380	68,217	12,163	17.8
Cloud Lake	502	601	-99	-16.5
Delray Beach	134	135	-1	-0.7
Glen Ridge	66,846	60,522	6,324	10.4
Golf	217	219	-2	-0.9
Greenacres	255	252	3	1.2
Gulf Stream	43,990	37,573	6,417	17.1
Haverhill	954	786	168	21.4
Highland Beach	2,187	1,873	314	16.8
Hypoluxo	4,295	3,539	756	21.4
Juno Beach	2,687	2,588	99	3.8
Jupiter	3,858	3,176	682	21.5
Jupiter Inlet Colony	61,047	55,156	5,891	10.7
Lake Clarke Shores	405	400	5	1.3
Lake Park	3,564	3,376	188	5.6
Lake Worth Beach	9,047	8,155	892	10.9
Lantana	42,219	34,910	7,309	20.9
Loxahatchee Groves	11,504	10,423	1,081	10.4
Manalapan	3,355	3,180	175	5.5
Mangonia Park	419	406	13	3.2
North Palm Beach	2,142	1,888	254	13.5
Ocean Ridge	13,162	12,015	1,147	9.5
Pahokee	1,830	1,786	44	2.5
Palm Beach*	5,524	5,649	-125	-2.2
	9,245	8,161	1,084	13.3

**Table 1. Census Population Counts by County and City in Florida, April 1, 2020 and 2010**

(Continued)

County, City, and State	April 1, 2020	April 1, 2010	Total Change	Percent Change
<b>Palm Beach (Continued)</b>				
Palm Beach Gardens*	59,182	48,440	10,742	22.2
Palm Beach Shores	1,330	1,142	188	16.5
Palm Springs	26,890	18,928	7,962	42.1
Riviera Beach	37,604	32,488	5,116	15.7
Royal Palm Beach	38,932	34,140	4,792	14.0
South Bay	4,860	4,876	-16	-0.3
South Palm Beach*	1,471	1,358	113	8.3
Tequesta	6,158	5,629	529	9.4
Wellington	61,637	56,508	5,129	9.1
Westlake*****	906	0	906	(X)
West Palm Beach*	117,415	100,343	17,072	17.0
UNINCORPORATED*	649,776	587,432	62,344	10.6
<b>Pasco</b>				
Dade City	561,891	464,697	97,194	20.9
New Port Richey	7,275	6,437	838	13.0
Port Richey	16,728	14,911	1,817	12.2
St. Leo	3,052	2,671	381	14.3
San Antonio	2,362	1,340	1,022	76.3
Zephyrhills	1,297	1,138	159	14.0
UNINCORPORATED	17,194	13,288	3,906	29.4
	513,983	424,912	89,071	21.0
<b>Pinellas</b>				
Belleair	959,107	916,542	42,565	4.6
Belleair Beach	4,273	3,869	404	10.4
Belleair Bluffs	1,633	1,560	73	4.7
Belleair Shore	2,311	2,031	280	13.8
Clearwater	73	109	-36	-33.0
Dunedin	117,292	107,685	9,607	8.9
Gulfport	36,068	35,321	747	2.1
Indian Rocks Beach	11,783	12,029	-246	-2.0
Indian Shores	3,673	4,113	-440	-10.7
Kenneth City	1,190	1,420	-230	-16.2
Largo	5,047	4,980	67	1.3
Madeira Beach	82,485	77,648	4,837	6.2
North Redington Beach	3,895	4,263	-368	-8.6
Oldsmar	1,495	1,417	78	5.5
Pinellas Park	14,898	13,591	1,307	9.6
Redington Beach	53,093	49,079	4,014	8.2
Redington Shores	1,376	1,427	-51	-3.6
Safety Harbor	2,176	2,121	55	2.6
St. Pete Beach	17,072	16,884	188	1.1
St. Petersburg	8,879	9,346	-467	-5.0
Seminole	258,308	244,769	13,539	5.5
	19,364	17,233	2,131	12.4

**Table 1. Census Population Counts by County and City in Florida, April 1, 2020 and 2010**

(Continued)

County, City, and State	April 1, 2020	April 1, 2010	Total Change	Percent Change
<b>Pinellas (Continued)</b>				
South Pasadena	5,353	4,964	389	7.8
Tarpon Springs	25,117	23,484	1,633	7.0
Treasure Island	6,584	6,705	-121	-1.8
UNINCORPORATED	275,669	270,494	5,175	1.9
<b>Polk</b>				
	725,046	602,095	122,951	20.4
Auburndale	15,616	13,507	2,109	15.6
Bartow	19,309	17,298	2,011	11.6
Davenport	9,043	2,888	6,155	213.1
Dundee	5,235	3,717	1,518	40.8
Eagle Lake	3,008	2,255	753	33.4
Fort Meade	5,100	5,626	-526	-9.3
Frostproof	2,877	2,992	-115	-3.8
Haines City*	26,669	20,560	6,109	29.7
Highland Park	251	230	21	9.1
Hillcrest Heights	243	254	-11	-4.3
Lake Alfred	6,374	5,015	1,359	27.1
Lake Hamilton	1,537	1,231	306	24.9
Lakeland	112,641	97,422	15,219	15.6
Lake Wales	16,361	14,225	2,136	15.0
Mulberry	3,952	3,817	135	3.5
Polk City	2,713	1,562	1,151	73.7
Winter Haven	49,219	33,874	15,345	45.3
UNINCORPORATED*	444,898	375,622	69,276	18.4
<b>Putnam</b>				
	73,321	74,364	-1,043	-1.4
Crescent City	1,654	1,577	77	4.9
Interlachen	1,441	1,403	38	2.7
Palatka	10,446	10,558	-112	-1.1
Pomona Park	784	912	-128	-14.0
Welaka	714	701	13	1.9
UNINCORPORATED	58,282	59,213	-931	-1.6
<b>St. Johns</b>				
	273,425	190,039	83,386	43.9
Hastings*****	0	580	-580	(X)
Marineland (part)	3	0	3	(X)
St. Augustine	14,329	12,975	1,354	10.4
St. Augustine Beach	6,803	6,176	627	10.2
UNINCORPORATED	252,290	170,308	81,982	48.1
<b>St. Lucie</b>				
	329,226	277,789	51,437	18.5
Ft. Pierce	47,297	41,590	5,707	13.7
Port St. Lucie	204,851	164,603	40,248	24.5
St. Lucie Village	613	590	23	3.9

**Table 1. Census Population Counts by County and City in Florida, April 1, 2020 and 2010**

(Continued)

County, City, and State	April 1, 2020	April 1, 2010	Total Change	Percent Change
<b>St. Lucie (Continued)</b>				
UNINCORPORATED	76,465	71,006	5,459	7.7
<b>Santa Rosa</b>				
Gulf Breeze	188,000	151,372	36,628	24.2
Jay	6,302	5,763	539	9.4
Milton	524	533	-9	-1.7
UNINCORPORATED	10,197	8,826	1,371	15.5
	170,977	136,250	34,727	25.5
<b>Sarasota</b>				
Longboat Key (part)	434,006	379,448	54,558	14.4
North Port	4,759	4,490	269	6.0
Sarasota	74,793	57,357	17,436	30.4
Venice	54,842	51,917	2,925	5.6
UNINCORPORATED	25,463	20,748	4,715	22.7
	274,149	244,936	29,213	11.9
<b>Seminole</b>				
Altamonte Springs	470,856	422,718	48,138	11.4
Casselberry	46,231	41,496	4,735	11.4
Lake Mary	28,794	26,241	2,553	9.7
Longwood	16,798	13,822	2,976	21.5
Oviedo	15,087	13,657	1,430	10.5
Sanford	40,059	33,342	6,717	20.1
Winter Springs	61,051	53,570	7,481	14.0
UNINCORPORATED	38,342	33,282	5,060	15.2
	224,494	207,308	17,186	8.3
<b>Sumter</b>				
Bushnell	129,752	93,420	36,332	38.9
Center Hill	3,047	2,418	629	26.0
Coleman	846	988	-142	-14.4
Webster	642	703	-61	-8.7
Wildwood	778	785	-7	-0.9
UNINCORPORATED	15,730	6,709	9,021	134.5
	108,709	81,817	26,892	32.9
<b>Suwannee</b>				
Branford	43,474	41,551	1,923	4.6
Live Oak	711	712	-1	-0.1
UNINCORPORATED	6,735	6,850	-115	-1.7
	36,028	33,989	2,039	6.0
<b>Taylor</b>				
Perry	21,796	22,570	-774	-3.4
UNINCORPORATED	6,898	7,017	-119	-1.7
	14,898	15,553	-655	-4.2
<b>Union</b>				
Lake Butler	16,147	15,535	612	3.9
	1,986	1,897	89	4.7

**Table 1. Census Population Counts by County and City in Florida, April 1, 2020 and 2010**

(Continued)

County, City, and State	April 1, 2020	April 1, 2010	Total Change	Percent Change
<b>Union (Continued)</b>				
Raiford	224	255	-31	-12.2
Worthington Springs*	378	407	-29	-7.1
UNINCORPORATED*	13,559	12,976	583	4.5
<b>Volusia</b>				
Daytona Beach	71,488	61,005	10,483	17.2
Daytona Beach Shores	5,179	4,247	932	21.9
DeBary	22,260	19,320	2,940	15.2
DeLand	37,351	27,031	10,320	38.2
Deltona	93,692	85,182	8,510	10.0
Edgewater	23,097	20,750	2,347	11.3
Flagler Beach (part)	72	60	12	20.0
Holly Hill	12,958	11,659	1,299	11.1
Lake Helen	2,842	2,624	218	8.3
New Smyrna Beach	30,142	22,464	7,678	34.2
Oak Hill	1,986	1,792	194	10.8
Orange City	12,632	10,599	2,033	19.2
Ormond Beach	43,080	38,137	4,943	13.0
Pierson	1,542	1,736	-194	-11.2
Ponce Inlet	3,364	3,032	332	10.9
Port Orange	62,596	56,048	6,548	11.7
South Daytona	12,865	12,252	613	5.0
UNINCORPORATED	116,397	116,655	-258	-0.2
<b>Wakulla</b>				
St. Marks	274	293	-19	-6.5
Sopchoppy	426	457	-31	-6.8
UNINCORPORATED	33,064	30,026	3,038	10.1
<b>Walton</b>				
DeFuniak Springs	5,919	5,177	742	14.3
Freeport	5,861	1,787	4,074	228.0
Paxton	556	644	-88	-13.7
UNINCORPORATED	62,969	47,435	15,534	32.7
<b>Washington</b>				
Caryville	301	411	-110	-26.8
Chipley	3,660	3,605	55	1.5
Ebro	237	270	-33	-12.2
Vernon	732	687	45	6.6
Wausau	371	383	-12	-3.1



**Table 1. Census Population Counts by County and City in Florida, April 1, 2020 and 2010**

(Continued)

County, City, and State	April 1, 2020	April 1, 2010	Total Change	Percent Change
<b>Washington (Continued)</b>				
UNINCORPORATED	20,017	19,540	477	2.4
<b>Florida*</b>				
Incorporated*	21,538,187	18,801,332	2,736,855	14.6
Unincorporated*	10,831,754	9,453,181	1,378,573	14.6
	10,706,433	9,348,151	1,358,282	14.5

(X): Not applicable.

Notes:

\* Includes all Census 2010 corrections as of February 11, 2014.

\*\* The City of Estero was incorporated on December 31, 2014.

\*\*\* The Village of Indiantown was incorporated on December 31, 2017.

\*\*\*\* The City of Islandia was disincorporated on March 6, 2012.

\*\*\*\*\* The City of Westlake was incorporated on June 20, 2016.

\*\*\*\*\* The City of Hastings was disincorporated on February 28, 2018.

**Table 2. Census Population Counts by State and Region of the United States,  
2020 and 2010**

State and Region	Population		Change	Percent Change	2020
	2020	2010			Percent of Nation
UNITED STATES	331,449,281	308,746,065	22,703,216	7.4	100.0
NORTHEAST	57,609,148	55,317,255	2,291,893	4.1	17.4
Connecticut	3,605,944	3,574,097	31,847	0.9	1.1
Maine	1,362,359	1,328,361	33,998	2.6	0.4
Massachusetts	7,029,917	6,547,629	482,288	7.4	2.1
New Hampshire	1,377,529	1,316,470	61,059	4.6	0.4
New Jersey*	9,288,994	8,791,909	497,085	5.7	2.8
New York	20,201,249	19,378,102	823,147	4.2	6.1
Pennsylvania	13,002,700	12,702,379	300,321	2.4	3.9
Rhode Island	1,097,379	1,052,567	44,812	4.3	0.3
Vermont	643,077	625,741	17,336	2.8	0.2
MIDWEST	68,985,454	66,927,078	2,058,376	3.1	20.8
Illinois	12,812,508	12,830,632	-18,124	-0.1	3.9
Indiana	6,785,528	6,483,802	301,726	4.7	2.0
Iowa	3,190,369	3,046,355	144,014	4.7	1.0
Kansas	2,937,880	2,853,118	84,762	3.0	0.9
Michigan*	10,077,331	9,883,706	193,625	2.0	3.0
Minnesota	5,706,494	5,303,925	402,569	7.6	1.7
Missouri	6,154,913	5,988,927	165,986	2.8	1.9
Nebraska	1,961,504	1,826,341	135,163	7.4	0.6
North Dakota	779,094	672,591	106,503	15.8	0.2
Ohio	11,799,448	11,536,504	262,944	2.3	3.6
South Dakota*	886,667	814,191	72,476	8.9	0.3
Wisconsin	5,893,718	5,686,986	206,732	3.6	1.8
SOUTH	126,266,107	114,556,103	11,710,004	10.2	38.1
Alabama*	5,024,279	4,779,753	244,526	5.1	1.5
Arkansas*	3,011,524	2,915,919	95,605	3.3	0.9
Delaware	989,948	897,934	92,014	10.2	0.3
District of Columbia*	689,545	601,767	87,778	14.6	0.2
Florida*	21,538,187	18,801,332	2,736,855	14.6	6.5
Georgia*	10,711,908	9,687,850	1,024,058	10.6	3.2
Kentucky	4,505,836	4,339,367	166,469	3.8	1.4

**Table 2. Census Population Counts by State and Region of the United States,  
2020 and 2010 (Continued)**

State and Region	Population		Change	Percent Change	2020
	2020	2010			Percent of Nation
SOUTH (Continued)					
Louisiana	4,657,757	4,533,372	124,385	2.7	1.4
Maryland*	6,177,224	5,773,626	403,598	7.0	1.9
Mississippi	2,961,279	2,967,297	-6,018	-0.2	0.9
North Carolina	10,439,388	9,535,483	903,905	9.5	3.1
Oklahoma	3,959,353	3,751,351	208,002	5.5	1.2
South Carolina	5,118,425	4,625,364	493,061	10.7	1.5
Tennessee	6,910,840	6,346,105	564,735	8.9	2.1
Texas*	29,145,505	25,145,565	3,999,940	15.9	8.8
Virginia	8,631,393	8,001,024	630,369	7.9	2.6
West Virginia	1,793,716	1,852,994	-59,278	-3.2	0.5
WEST	78,588,572	71,945,629	6,642,943	9.2	23.7
Alaska*	733,391	710,235	23,156	3.3	0.2
Arizona	7,151,502	6,392,017	759,485	11.9	2.2
California	39,538,223	37,253,956	2,284,267	6.1	11.9
Colorado	5,773,714	5,029,196	744,518	14.8	1.7
Hawaii	1,455,271	1,360,301	94,970	7.0	0.4
Idaho*	1,839,106	1,567,652	271,454	17.3	0.6
Montana	1,084,225	989,415	94,810	9.6	0.3
Nevada	3,104,614	2,700,551	404,063	15.0	0.9
New Mexico*	2,117,522	2,059,181	58,341	2.8	0.6
Oregon	4,237,256	3,831,074	406,182	10.6	1.3
Utah	3,271,616	2,763,885	507,731	18.4	1.0
Washington	7,705,281	6,724,540	980,741	14.6	2.3
Wyoming	576,851	563,626	13,225	2.3	0.2

Note:

\* Includes all Census 2010 corrections as of February 11, 2014.

**Table 3. Components of Population Change for Counties in Florida, 2010 to 2020**

State and County	Total Change 2010–2020	Births	Deaths	Components of Change		Percent of Change Due to	
				Natural Increase	Net Migration	Natural Increase	Net Migration
FLORIDA	2,736,855	2,190,579	1,902,108	288,471	2,448,384	10.5	89.5
Alachua	31,132	28,388	18,688	9,700	21,432	31.2	68.8
Baker	1,144	3,444	2,440	1,004	140	87.8	12.2
Bay	6,364	22,393	18,346	4,047	2,317	63.6	36.4
Bradford	-217	3,026	3,013	13	-230	0.0	100.0
Brevard	63,236	51,697	69,117	-17,420	80,656	0.0	100.0
Broward	196,309	217,987	147,787	70,200	126,109	35.8	64.2
Calhoun	-977	1,391	1,682	-291	-686	29.8	70.2
Charlotte	26,869	10,198	25,038	-14,840	41,709	0.0	100.0
Citrus	12,607	10,459	25,045	-14,586	27,193	0.0	100.0
Clay	27,380	21,532	16,747	4,785	22,595	17.5	82.5
Collier	54,232	32,184	31,910	274	53,958	0.5	99.5
Columbia	2,167	8,025	7,838	187	1,980	8.6	91.4
DeSoto	-886	3,843	3,284	559	-1,445	0.0	100.0
Dixie	337	1,557	2,171	-614	951	0.0	100.0
Duval	131,304	128,129	79,127	49,002	82,302	37.3	62.7
Escambia	24,286	38,777	32,835	5,942	18,344	24.5	75.5
Flagler	19,682	8,115	12,530	-4,415	24,097	0.0	100.0
Franklin	902	1,024	1,315	-291	1,193	0.0	100.0
Gadsden	-2,563	5,530	4,683	847	-3,410	0.0	100.0
Gilchrist	925	1,910	1,920	-10	935	0.0	100.0
Glades	-758	668	1,153	-485	-273	64.0	36.0
Gulf	-1,671	1,222	1,805	-583	-1,088	34.9	65.1
Hamilton	-795	1,597	1,460	137	-932	0.0	100.0
Hardee	-2,404	3,805	2,126	1,679	-4,083	0.0	100.0
Hendry	479	5,906	2,922	2,984	-2,505	100.0	0.0
Hernando	21,737	15,337	26,266	-10,929	32,666	0.0	100.0
Highlands	2,449	8,934	15,185	-6,251	8,700	0.0	100.0
Hillsborough	230,536	169,523	101,498	68,025	162,511	29.5	70.5
Holmes	-274	1,976	2,630	-654	380	100.0	0.0
Indian River	21,760	12,633	19,512	-6,879	28,639	0.0	100.0
Jackson	-2,427	4,984	6,004	-1,020	-1,407	42.0	58.0
Jefferson	-251	1,270	1,632	-362	111	100.0	0.0
Lafayette	-644	715	766	-51	-593	7.9	92.1
Lake	86,909	31,944	39,133	-7,189	94,098	0.0	100.0
Lee	142,068	65,836	67,319	-1,483	143,551	0.0	100.0

**Table 3. Components of Population Change for Counties in Florida, 2010 to 2020**  
(Continued)

State and County	Total Change 2010–2020	Births	Deaths	Components of Change		Percent of Change Due to	
				Natural Increase	Net Migration	Natural Increase	Net Migration
Leon	16,711	30,280	18,305	11,975	4,736	71.7	28.3
Levy	2,114	4,047	5,361	-1,314	3,428	0.0	100.0
Liberty	-391	785	689	96	-487	0.0	100.0
Madison	-1,256	2,038	2,280	-242	-1,014	19.3	80.7
Manatee	76,877	34,423	38,111	-3,688	80,565	0.0	100.0
Marion	44,605	34,387	48,496	-14,109	58,714	0.0	100.0
Martin	12,113	12,249	18,660	-6,411	18,524	0.0	100.0
Miami-Dade	205,310	313,788	193,332	120,456	84,854	58.7	41.3
Monroe	9,784	7,202	6,938	264	9,520	2.7	97.3
Nassau	17,038	7,939	8,032	-93	17,131	0.0	100.0
Okaloosa	30,846	27,108	17,208	9,900	20,946	32.1	67.9
Okeechobee	-352	5,277	4,407	870	-1,222	0.0	100.0
Orange	283,952	162,403	76,322	86,081	197,871	30.3	69.7
Osceola	119,971	41,416	20,967	20,449	99,522	17.0	83.0
Palm Beach	172,057	145,051	140,978	4,073	167,984	2.4	97.6
Pasco	97,194	49,456	59,102	-9,646	106,840	0.0	100.0
Pinellas	42,565	83,575	116,563	-32,988	75,553	0.0	100.0
Polk	122,951	76,113	65,445	10,668	112,283	8.7	91.3
Putnam	-1,043	8,364	9,803	-1,439	396	100.0	0.0
St. Johns	83,386	20,624	18,166	2,458	80,928	2.9	97.1
St. Lucie	51,437	30,336	30,740	-404	51,841	0.0	100.0
Santa Rosa	36,628	18,770	14,037	4,733	31,895	12.9	87.1
Sarasota	54,558	28,822	54,248	-25,426	79,984	0.0	100.0
Seminole	48,138	45,598	32,549	13,049	35,089	27.1	72.9
Sumter	36,332	4,661	16,443	-11,782	48,114	0.0	100.0
Suwannee	1,923	4,617	5,548	-931	2,854	0.0	100.0
Taylor	-774	2,363	2,502	-139	-635	18.0	82.0
Union	612	1,618	2,251	-633	1,245	0.0	100.0
Volusia	58,950	48,155	67,942	-19,787	78,737	0.0	100.0
Wakulla	2,988	3,256	2,668	588	2,400	19.7	80.3
Walton	20,262	7,434	6,062	1,372	18,890	6.8	93.2
Washington	422	2,465	3,026	-561	983	0.0	100.0

**Table 4. Census Population Counts and Percent Change in Population  
by Decade for Counties in Florida, 1990 to 2020**

State and County	Population				Percent Change		
	2020	2010	2000	1990	2010 to 2020	2000 to 2010	1990 to 2000
FLORIDA	21,538,187	18,801,332	15,982,824	12,938,071	14.6	17.6	23.5
Alachua	278,468	247,336	217,955	181,596	12.6	13.5	20.0
Baker	28,259	27,115	22,259	18,486	4.2	21.8	20.4
Bay	175,216	168,852	148,217	126,994	3.8	13.9	16.7
Bradford	28,303	28,520	26,088	22,515	-0.8	9.3	15.9
Brevard	606,612	543,376	476,230	398,978	11.6	14.1	19.4
Broward	1,944,375	1,748,066	1,623,018	1,255,531	11.2	7.7	29.3
Calhoun	13,648	14,625	13,017	11,011	-6.7	12.4	18.2
Charlotte	186,847	159,978	141,627	110,975	16.8	13.0	27.6
Citrus	153,843	141,236	118,085	93,513	8.9	19.6	26.3
Clay	218,245	190,865	140,814	105,986	14.3	35.5	32.9
Collier	375,752	321,520	251,377	152,099	16.9	27.9	65.3
Columbia	69,698	67,531	56,513	42,613	3.2	19.5	32.6
DeSoto	33,976	34,862	32,209	23,865	-2.5	8.2	35.0
Dixie	16,759	16,422	13,827	10,585	2.1	18.8	30.6
Duval	995,567	864,263	778,879	672,971	15.2	11.0	15.7
Escambia	321,905	297,619	294,410	262,798	8.2	1.1	12.0
Flagler	115,378	95,696	49,832	28,701	20.6	92.0	73.6
Franklin	12,451	11,549	9,829	8,967	7.8	17.5	9.6
Gadsden	43,826	46,389	45,087	41,116	-5.5	2.9	9.7
Gilchrist	17,864	16,939	14,437	9,667	5.5	17.3	49.3
Glades	12,126	12,884	10,576	7,591	-5.9	21.8	39.3
Gulf	14,192	15,863	14,560	11,504	-10.5	8.9	26.6
Hamilton	14,004	14,799	13,327	10,930	-5.4	11.0	21.9
Hardee	25,327	27,731	26,938	19,499	-8.7	2.9	38.2
Hendry	39,619	39,140	36,210	25,773	1.2	8.1	40.5
Hernando	194,515	172,778	130,802	101,115	12.6	32.1	29.4
Highlands	101,235	98,786	87,366	68,432	2.5	13.1	27.7
Hillsborough	1,459,762	1,229,226	998,948	834,054	18.8	23.1	19.8
Holmes	19,653	19,927	18,564	15,778	-1.4	7.3	17.7
Indian River	159,788	138,028	112,947	90,208	15.8	22.2	25.2
Jackson	47,319	49,746	46,755	41,375	-4.9	6.4	13.0
Jefferson	14,510	14,761	12,902	11,296	-1.7	14.4	14.2
Lafayette	8,226	8,870	7,022	5,578	-7.3	26.3	25.9
Lake	383,956	297,047	210,527	152,104	29.3	41.1	38.4
Lee	760,822	618,754	440,888	335,113	23.0	40.3	31.6

**Table 4. Census Population Counts and Percent Change in Population  
by Decade for Counties in Florida, 1990 to 2020 (Continued)**

State and County	Population				Percent Change		
	2020	2010	2000	1990	2010 to 2020	2000 to 2010	1990 to 2000
Leon	292,198	275,487	239,452	192,493	6.1	15.0	24.4
Levy	42,915	40,801	34,450	25,912	5.2	18.4	32.9
Liberty	7,974	8,365	7,021	5,569	-4.7	19.1	26.1
Madison	17,968	19,224	18,733	16,569	-6.5	2.6	13.1
Manatee	399,710	322,833	264,002	211,707	23.8	22.3	24.7
Marion	375,908	331,303	258,916	194,835	13.5	28.0	32.9
Martin	158,431	146,318	126,731	100,900	8.3	15.5	25.6
Miami-Dade	2,701,767	2,496,457	2,253,779	1,937,194	8.2	10.8	16.3
Monroe	82,874	73,090	79,589	78,024	13.4	-8.2	2.0
Nassau	90,352	73,314	57,663	43,941	23.2	27.1	31.2
Okaloosa	211,668	180,822	170,498	143,777	17.1	6.1	18.6
Okeechobee	39,644	39,996	35,910	29,627	-0.9	11.4	21.2
Orange	1,429,908	1,145,956	896,344	677,491	24.8	27.8	32.3
Osceola	388,656	268,685	172,493	107,728	44.7	55.8	60.1
Palm Beach	1,492,191	1,320,134	1,131,191	863,503	13.0	16.7	31.0
Pasco	561,891	464,697	344,768	281,131	20.9	34.8	22.6
Pinellas	959,107	916,542	921,495	851,659	4.6	-0.5	8.2
Polk	725,046	602,095	483,924	405,382	20.4	24.4	19.4
Putnam	73,321	74,364	70,423	65,070	-1.4	5.6	8.2
St. Johns	273,425	190,039	123,135	83,829	43.9	54.3	46.9
St. Lucie	329,226	277,789	192,695	150,171	18.5	44.2	28.3
Santa Rosa	188,000	151,372	117,743	81,608	24.2	28.6	44.3
Sarasota	434,006	379,448	325,961	277,776	14.4	16.4	17.3
Seminole	470,856	422,718	365,199	287,521	11.4	15.8	27.0
Sumter	129,752	93,420	53,345	31,577	38.9	75.1	68.9
Suwannee	43,474	41,551	34,844	26,780	4.6	19.2	30.1
Taylor	21,796	22,570	19,256	17,111	-3.4	17.2	12.5
Union	16,147	15,535	13,442	10,252	3.9	15.6	31.1
Volusia	553,543	494,593	443,343	370,737	11.9	11.6	19.6
Wakulla	33,764	30,776	22,863	14,202	9.7	34.6	61.0
Walton	75,305	55,043	40,601	27,759	36.8	35.6	46.3
Washington	25,318	24,896	20,973	16,919	1.7	18.7	24.0

Note: Data for 1990, 2000, and 2010 include census corrections.



**Table 5. Census Population Counts and Percent Change in Population by Decade for Metropolitan Statistical Areas in Florida, 1990 to 2020**

Metropolitan Statistical Area and County	Population				Percent Change		
	2020	2010	2000	1990	2010 to 2020	2000 to 2010	1990 to 2000
ALL MSAs	20,854,370	18,119,272	15,357,198	12,414,566	15.1	18.0	23.7
CAPE CORAL-FORT MYERS	760,822	618,754	440,888	335,113	23.0	40.3	31.6
Lee	760,822	618,754	440,888	335,113	23.0	40.3	31.6
CRESTVIEW-FORT WALTON							
BEACH-DESTIN	286,973	235,865	211,099	171,536	21.7	11.7	23.1
Okaloosa	211,668	180,822	170,498	143,777	17.1	6.1	18.6
Walton	75,305	55,043	40,601	27,759	36.8	35.6	46.3
DELTONA-DAYTONA BEACH-							
ORMOND BEACH	668,921	590,289	493,175	399,438	13.3	19.7	23.5
Flagler	115,378	95,696	49,832	28,701	20.6	92.0	73.6
Volusia	553,543	494,593	443,343	370,737	11.9	11.6	19.6
GAINESVILLE	339,247	305,076	266,842	217,175	11.2	14.3	22.9
Alachua	278,468	247,336	217,955	181,596	12.6	13.5	20.0
Gilchrist	17,864	16,939	14,437	9,667	5.5	17.3	49.3
Levy	42,915	40,801	34,450	25,912	5.2	18.4	32.9
HOMOSASSA SPRINGS	153,843	141,236	118,085	93,513	8.9	19.6	26.3
Citrus	153,843	141,236	118,085	93,513	8.9	19.6	26.3
JACKSONVILLE	1,605,848	1,345,596	1,122,750	925,213	19.3	19.8	21.4
Baker	28,259	27,115	22,259	18,486	4.2	21.8	20.4
Clay	218,245	190,865	140,814	105,986	14.3	35.5	32.9
Duval	995,567	864,263	778,879	672,971	15.2	11.0	15.7
Nassau	90,352	73,314	57,663	43,941	23.2	27.1	31.2
St. Johns	273,425	190,039	123,135	83,829	43.9	54.3	46.9
LAKELAND-WINTER HAVEN	725,046	602,095	483,924	405,382	20.4	24.4	19.4
Polk	725,046	602,095	483,924	405,382	20.4	24.4	19.4
MIAMI-FORT LAUDERDALE-							
POMPANO BEACH	6,138,333	5,564,657	5,007,988	4,056,228	10.3	11.1	23.5
Broward	1,944,375	1,748,066	1,623,018	1,255,531	11.2	7.7	29.3
Miami-Dade	2,701,767	2,496,457	2,253,779	1,937,194	8.2	10.8	16.3
Palm Beach	1,492,191	1,320,134	1,131,191	863,503	13.0	16.7	31.0
NAPLES-MARCO ISLAND	375,752	321,520	251,377	152,099	16.9	27.9	65.3
Collier	375,752	321,520	251,377	152,099	16.9	27.9	65.3
NORTH PORT-SARASOTA-							
BRADENTON	833,716	702,281	589,963	489,483	18.7	19.0	20.5
Manatee	399,710	322,833	264,002	211,707	23.8	22.3	24.7
Sarasota	434,006	379,448	325,961	277,776	14.4	16.4	17.3
Ocala	375,908	331,303	258,916	194,835	13.5	28.0	32.9
Marion	375,908	331,303	258,916	194,835	13.5	28.0	32.9

**Table 5. Census Population Counts and Percent Change in Population by Decade for Metropolitan Statistical Areas in Florida, 1990 to 2020 (Continued)**

Metropolitan Statistical Area and County	Population				Percent Change		
	2020	2010	2000	1990	2010 to 2020	2000 to 2010	1990 to 2000
ORLANDO-KISSIMMEE-SANFORD	2,673,376	2,134,406	1,644,563	1,224,844	25.3	29.8	34.3
Lake	383,956	297,047	210,527	152,104	29.3	41.1	38.4
Orange	1,429,908	1,145,956	896,344	677,491	24.8	27.8	32.3
Osceola	388,656	268,685	172,493	107,728	44.7	55.8	60.1
Seminole	470,856	422,718	365,199	287,521	11.4	15.8	27.0
PALM BAY-MELBOURNE-TITUSVILLE	606,612	543,376	476,230	398,978	11.6	14.1	19.4
Brevard	606,612	543,376	476,230	398,978	11.6	14.1	19.4
PANAMA CITY	175,216	168,852	148,217	126,994	3.8	13.9	16.7
Bay	175,216	168,852	148,217	126,994	3.8	13.9	16.7
PENSACOLA-FERRY PASS-BRENT	509,905	448,991	412,153	344,406	13.6	8.9	19.7
Escambia	321,905	297,619	294,410	262,798	8.2	1.1	12.0
Santa Rosa	188,000	151,372	117,743	81,608	24.2	28.6	44.3
PORT ST. LUCIE	487,657	424,107	319,426	251,071	15.0	32.8	27.2
Martin	158,431	146,318	126,731	100,900	8.3	15.5	25.6
St. Lucie	329,226	277,789	192,695	150,171	18.5	44.2	28.3
PUNTA GORDA	186,847	159,978	141,627	110,975	16.8	13.0	27.6
Charlotte	186,847	159,978	141,627	110,975	16.8	13.0	27.6
SEBASTIAN-VERO BEACH	159,788	138,028	112,947	90,208	15.8	22.2	25.2
Indian River	159,788	138,028	112,947	90,208	15.8	22.2	25.2
SEBRING-AVON PARK	101,235	98,786	87,366	68,432	2.5	13.1	27.7
Highlands	101,235	98,786	87,366	68,432	2.5	13.1	27.7
TALLAHASSEE	384,298	367,413	320,304	259,107	4.6	14.7	23.6
Gadsden	43,826	46,389	45,087	41,116	-5.5	2.9	9.7
Jefferson	14,510	14,761	12,902	11,296	-1.7	14.4	14.2
Leon	292,198	275,487	239,452	192,493	6.1	15.0	24.4
Wakulla	33,764	30,776	22,863	14,202	9.7	34.6	61.0
TAMPA-ST. PETERSBURG-CLEARWATER	3,175,275	2,783,243	2,396,013	2,067,959	14.1	16.2	15.9
Hernando	194,515	172,778	130,802	101,115	12.6	32.1	29.4
Hillsborough	1,459,762	1,229,226	998,948	834,054	18.8	23.1	19.8
Pasco	561,891	464,697	344,768	281,131	20.9	34.8	22.6
Pinellas	959,107	916,542	921,495	851,659	4.6	-0.5	8.2
THE VILLAGES	129,752	93,420	53,345	31,577	38.9	75.1	68.9
Sumter	129,752	93,420	53,345	31,577	38.9	75.1	68.9

Notes: MSAs are based on the March 6, 2020 U.S. Office of Management and Budget MSA definitions (OMB Bulletin No. 20-01). Data for 1990, 2000, and 2010 include census corrections.

**Table 6. Census Population Counts and Percent Change in Population by Decade  
for Regional Planning Councils in Florida, 1990 to 2020**

State, Regional Planning Council, and County	Population				Percent Change		
	2020	2010	2000	1990	2010 to 2020	2000 to 2010	1990 to 2000
FLORIDA	21,538,187	18,801,332	15,982,824	12,938,071	14.6	17.6	23.5
APALACHEE	479,882	467,561	411,486	337,533	2.6	13.6	21.9
Calhoun	13,648	14,625	13,017	11,011	-6.7	12.4	18.2
Franklin	12,451	11,549	9,829	8,967	7.8	17.5	9.6
Gadsden	43,826	46,389	45,087	41,116	-5.5	2.9	9.7
Gulf	14,192	15,863	14,560	11,504	-10.5	8.9	26.6
Jackson	47,319	49,746	46,755	41,375	-4.9	6.4	13.0
Jefferson	14,510	14,761	12,902	11,296	-1.7	14.4	14.2
Leon	292,198	275,487	239,452	192,493	6.1	15.0	24.4
Liberty	7,974	8,365	7,021	5,569	-4.7	19.1	26.1
Wakulla	33,764	30,776	22,863	14,202	9.7	34.6	61.0
CENTRAL FLORIDA	925,228	803,470	666,347	546,805	15.2	20.6	21.9
DeSoto	33,976	34,862	32,209	23,865	-2.5	8.2	35.0
Hardee	25,327	27,731	26,938	19,499	-8.7	2.9	38.2
Highlands	101,235	98,786	87,366	68,432	2.5	13.1	27.7
Okeechobee	39,644	39,996	35,910	29,627	-0.9	11.4	21.2
Polk	725,046	602,095	483,924	405,382	20.4	24.4	19.4
EAST CENTRAL FLORIDA	4,339,191	3,597,098	2,876,397	2,220,971	20.6	25.1	29.5
Brevard	606,612	543,376	476,230	398,978	11.6	14.1	19.4
Lake	383,956	297,047	210,527	152,104	29.3	41.1	38.4
Marion	375,908	331,303	258,916	194,835	13.5	28.0	32.9
Orange	1,429,908	1,145,956	896,344	677,491	24.8	27.8	32.3
Osceola	388,656	268,685	172,493	107,728	44.7	55.8	60.1
Seminole	470,856	422,718	365,199	287,521	11.4	15.8	27.0
Sumter	129,752	93,420	53,345	31,577	38.9	75.1	68.9
Volusia	553,543	494,593	443,343	370,737	11.9	11.6	19.6
EMERALD COAST	1,017,065	898,531	811,006	675,633	13.2	10.8	20.0
Bay	175,216	168,852	148,217	126,994	3.8	13.9	16.7
Escambia	321,905	297,619	294,410	262,798	8.2	1.1	12.0
Holmes	19,653	19,927	18,564	15,778	-1.4	7.3	17.7
Okaloosa	211,668	180,822	170,498	143,777	17.1	6.1	18.6
Santa Rosa	188,000	151,372	117,743	81,608	24.2	28.6	44.3
Walton	75,305	55,043	40,601	27,759	36.8	35.6	46.3
Washington	25,318	24,896	20,973	16,919	1.7	18.7	24.0
NORTH CENTRAL FLORIDA	575,622	540,098	469,894	380,108	6.6	14.9	23.6
Alachua	278,468	247,336	217,955	181,596	12.6	13.5	20.0
Bradford	28,303	28,520	26,088	22,515	-0.8	9.3	15.9
Columbia	69,698	67,531	56,513	42,613	3.2	19.5	32.6
Dixie	16,759	16,422	13,827	10,585	2.1	18.8	30.6
Gilchrist	17,864	16,939	14,437	9,667	5.5	17.3	49.3
Hamilton	14,004	14,799	13,327	10,930	-5.4	11.0	21.9

**Table 6. Census Population Counts and Percent Change in Population by Decade  
for Regional Planning Councils in Florida, 1990 to 2020 (Continued)**

State, Regional Planning Council, and County	Population				Percent Change		
	2020	2010	2000	1990	2010 to 2020	2000 to 2010	1990 to 2000
<b>NORTH CENTRAL FLORIDA</b>							
<b>(Continued)</b>							
Lafayette	8,226	8,870	7,022	5,578	-7.3	26.3	25.9
Levy	42,915	40,801	34,450	25,912	5.2	18.4	32.9
Madison	17,968	19,224	18,733	16,569	-6.5	2.6	13.1
Suwannee	43,474	41,551	34,844	26,780	4.6	19.2	30.1
Taylor	21,796	22,570	19,256	17,111	-3.4	17.2	12.5
Union	16,147	15,535	13,442	10,252	3.9	15.6	31.1
<b>NORTHEAST FLORIDA</b>							
Baker	28,259	27,115	22,259	18,486	4.2	21.8	20.4
Clay	218,245	190,865	140,814	105,986	14.3	35.5	32.9
Duval	995,567	864,263	778,879	672,971	15.2	11.0	15.7
Flagler	115,378	95,696	49,832	28,701	20.6	92.0	73.6
Nassau	90,352	73,314	57,663	43,941	23.2	27.1	31.2
Putnam	73,321	74,364	70,423	65,070	-1.4	5.6	8.2
St. Johns	273,425	190,039	123,135	83,829	43.9	54.3	46.9
<b>SOUTH FLORIDA</b>							
Broward	1,944,375	1,748,066	1,623,018	1,255,531	11.2	7.7	29.3
Miami-Dade	2,701,767	2,496,457	2,253,779	1,937,194	8.2	10.8	16.3
Monroe	82,874	73,090	79,589	78,024	13.4	-8.2	2.0
<b>SOUTHWEST FLORIDA</b>							
Charlotte	186,847	159,978	141,627	110,975	16.8	13.0	27.6
Collier	375,752	321,520	251,377	152,099	16.9	27.9	65.3
Glades	12,126	12,884	10,576	7,591	-5.9	21.8	39.3
Hendry	39,619	39,140	36,210	25,773	1.2	8.1	40.5
Lee	760,822	618,754	440,888	335,113	23.0	40.3	31.6
Sarasota	434,006	379,448	325,961	277,776	14.4	16.4	17.3
<b>TAMPA BAY</b>							
Citrus	153,843	141,236	118,085	93,513	8.9	19.6	26.3
Hernando	194,515	172,778	130,802	101,115	12.6	32.1	29.4
Hillsborough	1,459,762	1,229,226	998,948	834,054	18.8	23.1	19.8
Manatee	399,710	322,833	264,002	211,707	23.8	22.3	24.7
Pasco	561,891	464,697	344,768	281,131	20.9	34.8	22.6
Pinellas	959,107	916,542	921,495	851,659	4.6	-0.5	8.2
<b>TREASURE COAST</b>							
Indian River	159,788	138,028	112,947	90,208	15.8	22.2	25.2
Martin	158,431	146,318	126,731	100,900	8.3	15.5	25.6
Palm Beach	1,492,191	1,320,134	1,131,191	863,503	13.0	16.7	31.0
St. Lucie	329,226	277,789	192,695	150,171	18.5	44.2	28.3

Note: Data for 1990, 2000, and 2010 include census corrections.

**Table 7. Rank of Florida Counties by Population Size in 2020 and Population Distribution in 2020, 2010, 2000, and 1990**

Rank	State and County	Population				Percent of State Population			
		2020	2010	2000	1990	2020	2010	2000	1990
	FLORIDA	21,538,187	18,801,332	15,982,824	12,938,071	100.00	100.00	100.00	100.00
1	Miami-Dade	2,701,767	2,496,457	2,253,779	1,937,194	12.54	13.28	14.10	14.97
2	Broward	1,944,375	1,748,066	1,623,018	1,255,531	9.03	9.30	10.15	9.70
3	Palm Beach	1,492,191	1,320,134	1,131,191	863,503	6.93	7.02	7.08	6.67
4	Hillsborough	1,459,762	1,229,226	998,948	834,054	6.78	6.54	6.25	6.45
5	Orange	1,429,908	1,145,956	896,344	677,491	6.64	6.10	5.61	5.24
6	Duval	995,567	864,263	778,879	672,971	4.62	4.60	4.87	5.20
7	Pinellas	959,107	916,542	921,495	851,659	4.45	4.87	5.77	6.58
8	Lee	760,822	618,754	440,888	335,113	3.53	3.29	2.76	2.59
9	Polk	725,046	602,095	483,924	405,382	3.37	3.20	3.03	3.13
10	Brevard	606,612	543,376	476,230	398,978	2.82	2.89	2.98	3.08
11	Pasco	561,891	464,697	344,768	281,131	2.61	2.47	2.16	2.17
12	Volusia	553,543	494,593	443,343	370,737	2.57	2.63	2.77	2.87
13	Seminole	470,856	422,718	365,199	287,521	2.19	2.25	2.28	2.22
14	Sarasota	434,006	379,448	325,961	277,776	2.02	2.02	2.04	2.15
15	Manatee	399,710	322,833	264,002	211,707	1.86	1.72	1.65	1.64
16	Osceola	388,656	268,685	172,493	107,728	1.80	1.43	1.08	0.83
17	Lake	383,956	297,047	210,527	152,104	1.78	1.58	1.32	1.18
18	Marion	375,908	331,303	258,916	194,835	1.75	1.76	1.62	1.51
19	Collier	375,752	321,520	251,377	152,099	1.74	1.71	1.57	1.18
20	St. Lucie	329,226	277,789	192,695	150,171	1.53	1.48	1.21	1.16
21	Escambia	321,905	297,619	294,410	262,798	1.49	1.58	1.84	2.03
22	Leon	292,198	275,487	239,452	192,493	1.36	1.47	1.50	1.49
23	Alachua	278,468	247,336	217,955	181,596	1.29	1.32	1.36	1.40
24	St. Johns	273,425	190,039	123,135	83,829	1.27	1.01	0.77	0.65
25	Clay	218,245	190,865	140,814	105,986	1.01	1.02	0.88	0.82
26	Okaloosa	211,668	180,822	170,498	143,777	0.98	0.96	1.07	1.11
27	Hernando	194,515	172,778	130,802	101,115	0.90	0.92	0.82	0.78
28	Santa Rosa	188,000	151,372	117,743	81,608	0.87	0.81	0.74	0.63
29	Charlotte	186,847	159,978	141,627	110,975	0.87	0.85	0.89	0.86
30	Bay	175,216	168,852	148,217	126,994	0.81	0.90	0.93	0.98
31	Indian River	159,788	138,028	112,947	90,208	0.74	0.73	0.71	0.70
32	Martin	158,431	146,318	126,731	100,900	0.74	0.78	0.79	0.78
33	Citrus	153,843	141,236	118,085	93,513	0.71	0.75	0.74	0.72
34	Sumter	129,752	93,420	53,345	31,577	0.60	0.50	0.33	0.24
35	Flagler	115,378	95,696	49,832	28,701	0.54	0.51	0.31	0.22

**Table 7. Rank of Florida Counties by Population Size in 2020 and Population Distribution in 2020, 2010, 2000, and 1990 (Continued)**

Rank	State and County	Population				Percent of State Population			
		2020	2010	2000	1990	2020	2010	2000	1990
36	Highlands	101,235	98,786	87,366	68,432	0.47	0.53	0.55	0.53
37	Nassau	90,352	73,314	57,663	43,941	0.42	0.39	0.36	0.34
38	Monroe	82,874	73,090	79,589	78,024	0.38	0.39	0.50	0.60
39	Walton	75,305	55,043	40,601	27,759	0.35	0.29	0.25	0.21
40	Putnam	73,321	74,364	70,423	65,070	0.34	0.40	0.44	0.50
41	Columbia	69,698	67,531	56,513	42,613	0.32	0.36	0.35	0.33
42	Jackson	47,319	49,746	46,755	41,375	0.22	0.26	0.29	0.32
43	Gadsden	43,826	46,389	45,087	41,116	0.20	0.25	0.28	0.32
44	Suwannee	43,474	41,551	34,844	26,780	0.20	0.22	0.22	0.21
45	Levy	42,915	40,801	34,450	25,912	0.20	0.22	0.22	0.20
46	Okeechobee	39,644	39,996	35,910	29,627	0.18	0.21	0.22	0.23
47	Hendry	39,619	39,140	36,210	25,773	0.18	0.21	0.23	0.20
48	DeSoto	33,976	34,862	32,209	23,865	0.16	0.19	0.20	0.18
49	Wakulla	33,764	30,776	22,863	14,202	0.16	0.16	0.14	0.11
50	Bradford	28,303	28,520	26,088	22,515	0.13	0.15	0.16	0.17
51	Baker	28,259	27,115	22,259	18,486	0.13	0.14	0.14	0.14
52	Hardee	25,327	27,731	26,938	19,499	0.12	0.15	0.17	0.15
53	Washington	25,318	24,896	20,973	16,919	0.12	0.13	0.13	0.13
54	Taylor	21,796	22,570	19,256	17,111	0.10	0.12	0.12	0.13
55	Holmes	19,653	19,927	18,564	15,778	0.09	0.11	0.12	0.12
56	Madison	17,968	19,224	18,733	16,569	0.08	0.10	0.12	0.13
57	Gilchrist	17,864	16,939	14,437	9,667	0.08	0.09	0.09	0.07
58	Dixie	16,759	16,422	13,827	10,585	0.08	0.09	0.09	0.08
59	Union	16,147	15,535	13,442	10,252	0.07	0.08	0.08	0.08
60	Jefferson	14,510	14,761	12,902	11,296	0.07	0.08	0.08	0.09
61	Gulf	14,192	15,863	14,560	11,504	0.07	0.08	0.09	0.09
62	Hamilton	14,004	14,799	13,327	10,930	0.07	0.08	0.08	0.08
63	Calhoun	13,648	14,625	13,017	11,011	0.06	0.08	0.08	0.09
64	Franklin	12,451	11,549	9,829	8,967	0.06	0.06	0.06	0.07
65	Glades	12,126	12,884	10,576	7,591	0.06	0.07	0.07	0.06
66	Lafayette	8,226	8,870	7,022	5,578	0.04	0.05	0.04	0.04
67	Liberty	7,974	8,365	7,021	5,569	0.04	0.04	0.04	0.04

Note: Data for 1990, 2000, and 2010 include census corrections.

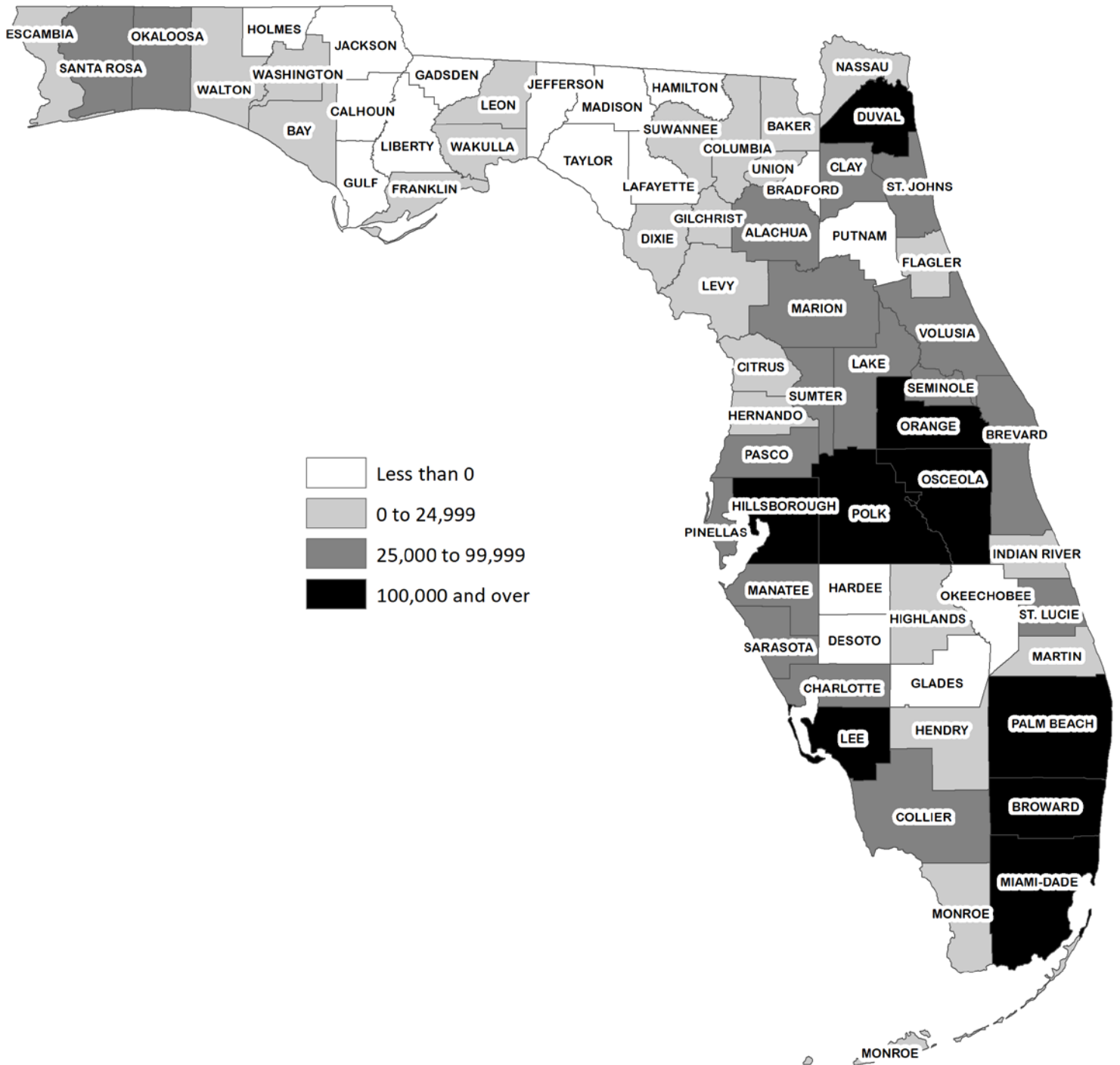
**Table 8. Rank of Florida Counties by Population Change, 2010 to 2020**

Rank	State and County	Change	Population		Rank	State and County	Change	Population	
			2020	2010				2020	2010
	FLORIDA	2,736,855	21,538,187	18,801,332	34	Leon	16,711	292,198	275,487
1	Orange	283,952	1,429,908	1,145,956	35	Citrus	12,607	153,843	141,236
2	Hillsborough	230,536	1,459,762	1,229,226	36	Martin	12,113	158,431	146,318
3	Miami-Dade	205,310	2,701,767	2,496,457	37	Monroe	9,784	82,874	73,090
4	Broward	196,309	1,944,375	1,748,066	38	Bay	6,364	175,216	168,852
5	Palm Beach	172,057	1,492,191	1,320,134	39	Wakulla	2,988	33,764	30,776
6	Lee	142,068	760,822	618,754	40	Highlands	2,449	101,235	98,786
7	Duval	131,304	995,567	864,263	41	Columbia	2,167	69,698	67,531
8	Polk	122,951	725,046	602,095	42	Levy	2,114	42,915	40,801
9	Osceola	119,971	388,656	268,685	43	Suwannee	1,923	43,474	41,551
10	Pasco	97,194	561,891	464,697	44	Baker	1,144	28,259	27,115
11	Lake	86,909	383,956	297,047	45	Gilchrist	925	17,864	16,939
12	St. Johns	83,386	273,425	190,039	46	Franklin	902	12,451	11,549
13	Manatee	76,877	399,710	322,833	47	Union	612	16,147	15,535
14	Brevard	63,236	606,612	543,376	48	Hendry	479	39,619	39,140
15	Volusia	58,950	553,543	494,593	49	Washington	422	25,318	24,896
16	Sarasota	54,558	434,006	379,448	50	Dixie	337	16,759	16,422
17	Collier	54,232	375,752	321,520	51	Bradford	-217	28,303	28,520
18	St. Lucie	51,437	329,226	277,789	52	Jefferson	-251	14,510	14,761
19	Seminole	48,138	470,856	422,718	53	Holmes	-274	19,653	19,927
20	Marion	44,605	375,908	331,303	54	Okeechobee	-352	39,644	39,996
21	Pinellas	42,565	959,107	916,542	55	Liberty	-391	7,974	8,365
22	Santa Rosa	36,628	188,000	151,372	56	Lafayette	-644	8,226	8,870
23	Sumter	36,332	129,752	93,420	57	Glades	-758	12,126	12,884
24	Alachua	31,132	278,468	247,336	58	Taylor	-774	21,796	22,570
25	Okaloosa	30,846	211,668	180,822	59	Hamilton	-795	14,004	14,799
26	Clay	27,380	218,245	190,865	60	DeSoto	-886	33,976	34,862
27	Charlotte	26,869	186,847	159,978	61	Calhoun	-977	13,648	14,625
28	Escambia	24,286	321,905	297,619	62	Putnam	-1,043	73,321	74,364
29	Indian River	21,760	159,788	138,028	63	Madison	-1,256	17,968	19,224
30	Hernando	21,737	194,515	172,778	64	Gulf	-1,671	14,192	15,863
31	Walton	20,262	75,305	55,043	65	Hardee	-2,404	25,327	27,731
32	Flagler	19,682	115,378	95,696	66	Jackson	-2,427	47,319	49,746
33	Nassau	17,038	90,352	73,314	67	Gadsden	-2,563	43,826	46,389

Note: Data for 2010 include census corrections.



Figure 1. Population Change, 2010 to 2020

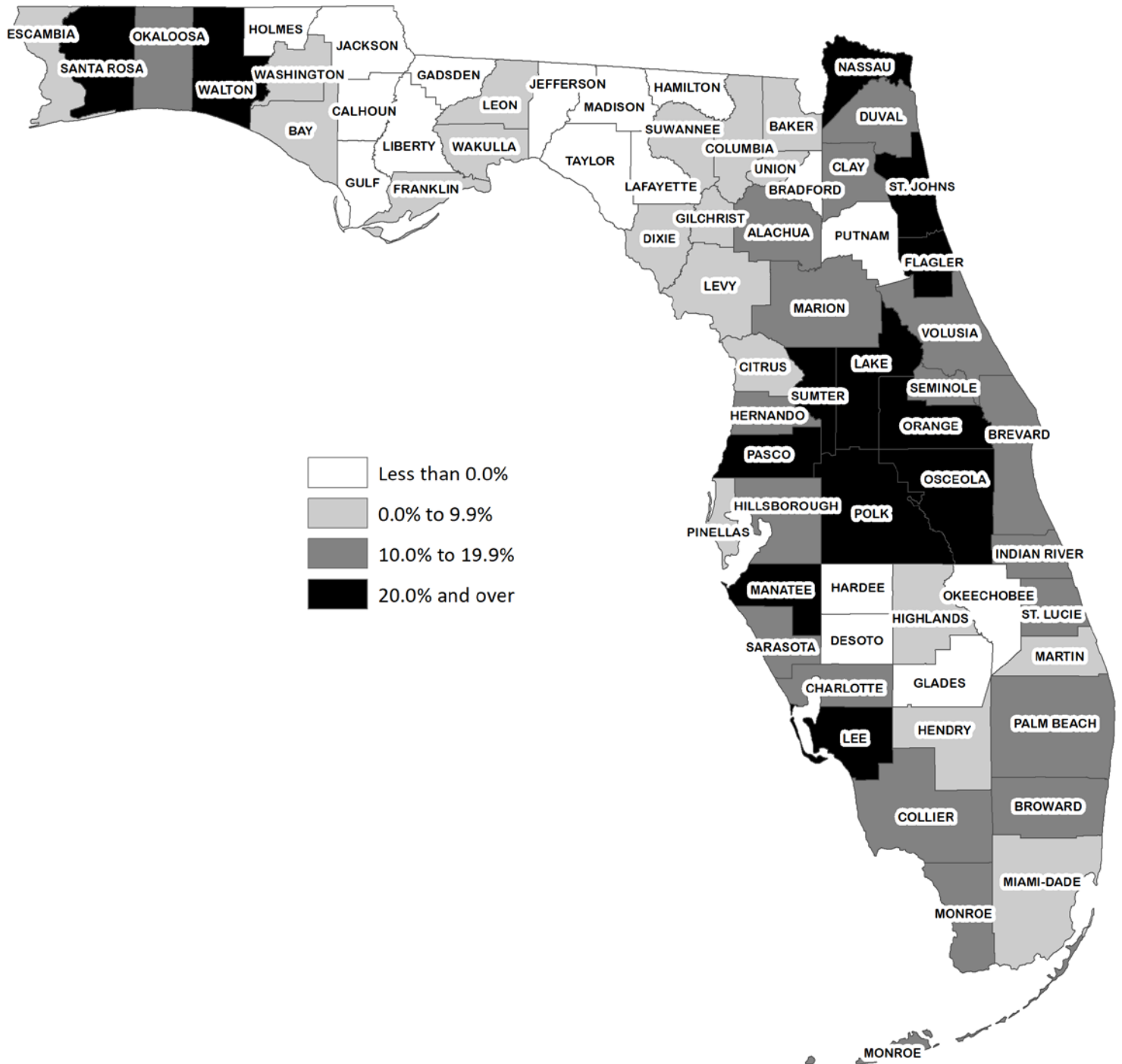


**Table 9. Rank of Florida Counties by Percent Change in Population, 2010 to 2020**

Rank	State and County	Percent Change	Population		Rank	State and County	Percent Change	Population	
			2020	2010				2020	2010
	FLORIDA	14.6	21,538,187	18,801,332	34	Martin	8.3	158,431	146,318
1	Osceola	44.7	388,656	268,685	35	Miami-Dade	8.2	2,701,767	2,496,457
2	St. Johns	43.9	273,425	190,039	36	Escambia	8.2	321,905	297,619
3	Sumter	38.9	129,752	93,420	37	Franklin	7.8	12,451	11,549
4	Walton	36.8	75,305	55,043	38	Leon	6.1	292,198	275,487
5	Lake	29.3	383,956	297,047	39	Gilchrist	5.5	17,864	16,939
6	Orange	24.8	1,429,908	1,145,956	40	Levy	5.2	42,915	40,801
7	Santa Rosa	24.2	188,000	151,372	41	Pinellas	4.6	959,107	916,542
8	Manatee	23.8	399,710	322,833	42	Suwannee	4.6	43,474	41,551
9	Nassau	23.2	90,352	73,314	43	Baker	4.2	28,259	27,115
10	Lee	23.0	760,822	618,754	44	Union	3.9	16,147	15,535
11	Pasco	20.9	561,891	464,697	45	Bay	3.8	175,216	168,852
12	Flagler	20.6	115,378	95,696	46	Columbia	3.2	69,698	67,531
13	Polk	20.4	725,046	602,095	47	Highlands	2.5	101,235	98,786
14	Hillsborough	18.8	1,459,762	1,229,226	48	Dixie	2.1	16,759	16,422
15	St. Lucie	18.5	329,226	277,789	49	Washington	1.7	25,318	24,896
16	Okaloosa	17.1	211,668	180,822	50	Hendry	1.2	39,619	39,140
17	Collier	16.9	375,752	321,520	51	Bradford	-0.8	28,303	28,520
18	Charlotte	16.8	186,847	159,978	52	Okeechobee	-0.9	39,644	39,996
19	Indian River	15.8	159,788	138,028	53	Holmes	-1.4	19,653	19,927
20	Duval	15.2	995,567	864,263	54	Putnam	-1.4	73,321	74,364
21	Sarasota	14.4	434,006	379,448	55	Jefferson	-1.7	14,510	14,761
22	Clay	14.3	218,245	190,865	56	DeSoto	-2.5	33,976	34,862
23	Marion	13.5	375,908	331,303	57	Taylor	-3.4	21,796	22,570
24	Monroe	13.4	82,874	73,090	58	Liberty	-4.7	7,974	8,365
25	Palm Beach	13.0	1,492,191	1,320,134	59	Jackson	-4.9	47,319	49,746
26	Alachua	12.6	278,468	247,336	60	Hamilton	-5.4	14,004	14,799
27	Hernando	12.6	194,515	172,778	61	Gadsden	-5.5	43,826	46,389
28	Volusia	11.9	553,543	494,593	62	Glades	-5.9	12,126	12,884
29	Brevard	11.6	606,612	543,376	63	Madison	-6.5	17,968	19,224
30	Seminole	11.4	470,856	422,718	64	Calhoun	-6.7	13,648	14,625
31	Broward	11.2	1,944,375	1,748,066	65	Lafayette	-7.3	8,226	8,870
32	Wakulla	9.7	33,764	30,776	66	Hardee	-8.7	25,327	27,731
33	Citrus	8.9	153,843	141,236	67	Gulf	-10.5	14,192	15,863

Note: Data for 2010 include census corrections.

Figure 2. Percent Change in Population, 2010 to 2020



**Table 10. Rank of the Top 100 Cities in Florida by Population Size in 2020, 2010, and 2000**

City	Population			Rank			Percent Change	
	2020	2010	2000	2020	2010	2000	2010–2020	2000–2010
Jacksonville	949,611	821,784	735,617	1	1	1	15.6	11.7
Miami	442,241	399,508	362,470	2	2	2	10.7	10.2
Tampa	384,959	335,709	303,447	3	3	3	14.7	10.6
Orlando	307,573	238,300	185,951	4	5	6	29.1	28.2
St. Petersburg	258,308	244,769	248,232	5	4	4	5.5	-1.4
Hialeah	223,109	224,667	226,419	6	6	5	-0.7	-0.8
Port St. Lucie	204,851	164,603	88,769	7	9	15	24.5	85.4
Tallahassee	196,169	181,376	150,624	8	7	8	8.2	20.4
Cape Coral	194,016	154,305	102,286	9	10	13	25.7	50.9
Fort Lauderdale	182,760	165,521	152,397	10	8	7	10.4	8.6
Pembroke Pines	171,178	154,019	137,427	11	11	10	11.1	12.1
Hollywood	153,067	140,768	139,368	12	12	9	8.7	1.0
Gainesville	141,085	124,476	95,447	13	13	14	13.3	30.4
Miramar	134,721	122,041	72,739	14	14	25	10.4	67.8
Coral Springs	134,394	121,096	117,549	15	15	11	11.0	3.0
Palm Bay	119,760	103,190	79,413	16	18	20	16.1	29.9
West Palm Beach	117,415	100,343	82,103	17	19	19	17.0	22.2
Clearwater	117,292	107,685	108,789	18	16	12	8.9	-1.0
Lakeland	112,641	97,422	78,452	19	21	21	15.6	24.2
Pompano Beach	112,046	99,845	78,191	20	20	22	12.2	27.7
Miami Gardens	111,640	107,166	(X)	21	17	(X)	4.2	(X)
Davie	105,691	91,992	75,720	22	22	23	14.9	21.5
Boca Raton	97,422	84,392	74,764	23	27	24	15.4	12.9
Sunrise	97,335	84,439	85,787	24	26	17	15.3	-1.6
Deltona	93,692	85,182	69,543	25	24	27	10.0	22.5
Plantation	91,750	84,955	82,934	26	25	18	8.0	2.4
Palm Coast	89,258	75,180	32,732	27	30	62	18.7	129.7
Deerfield Beach	86,859	75,018	64,585	28	31	29	15.8	16.2
Fort Myers	86,395	62,298	48,208	29	35	41	38.7	29.2
Melbourne	84,678	76,205	71,382	30	29	26	11.1	6.8
Miami Beach	82,890	87,778	87,933	31	23	16	-5.6	-0.2
Largo	82,485	77,648	69,371	32	28	28	6.2	11.9
Homestead	80,737	60,509	31,909	33	38	64	33.4	89.6
Boynton Beach	80,380	68,217	60,389	34	32	31	17.8	13.0
Kissimmee	79,226	59,682	47,814	35	40	42	32.7	24.8
Doral	75,874	45,709	(X)	36	56	(X)	66.0	(X)
North Port	74,793	57,357	22,797	37	42	80	30.4	151.6
Lauderhill	74,482	66,887	57,585	38	33	34	11.4	16.2
Tamarac	71,897	60,427	55,588	39	39	36	19.0	8.7
Daytona Beach	71,488	61,005	64,112	40	36	30	17.2	-4.8
Weston	68,107	65,333	49,286	41	34	40	4.2	32.6
Delray Beach	66,846	60,522	60,020	42	37	32	10.4	0.8
Ocala	63,591	56,315	45,943	43	44	43	12.9	22.6
Port Orange	62,596	56,048	45,823	44	45	44	11.7	22.3
Wellington	61,637	56,508	38,216	45	43	53	9.1	47.9
Sanford	61,051	53,570	38,291	46	47	52	14.0	39.9
Jupiter	61,047	55,156	39,328	47	46	51	10.7	40.2
North Miami	60,191	58,912	59,880	48	41	33	2.2	-1.6
Palm Beach Gardens	59,182	48,440	35,058	49	54	59	22.2	38.2
St. Cloud	58,964	35,183	20,074	50	73	88	67.6	75.3
Margate	58,712	53,284	53,909	51	48	37	10.2	-1.2
Coconut Creek	57,833	52,909	43,566	52	49	46	9.3	21.4

**Table 10. Rank of the Top 100 Cities in Florida by Population  
Size in 2020, 2010, and 2000 (Continued)**

City	Population			Rank			Percent Change	
	2020	2010	2000	2020	2010	2000	2010–2020	2000–2010
Bradenton	55,698	49,546	49,504	53	52	39	12.4	0.1
Apopka	54,873	41,542	26,642	54	60	72	32.1	55.9
Sarasota	54,842	51,917	52,715	55	51	38	5.6	-1.5
Pensacola	54,312	51,923	56,255	56	50	35	4.6	-7.7
Bonita Springs	53,644	43,857	32,797	57	57	61	22.3	33.7
Pinellas Park	53,093	49,079	45,658	58	53	45	8.2	7.5
Coral Gables	49,248	46,776	42,249	59	55	47	5.3	10.7
Winter Haven	49,219	33,874	26,487	60	78	73	45.3	27.9
Titusville	48,789	43,761	40,670	61	58	50	11.5	7.6
Fort Pierce	47,297	41,590	37,516	62	59	54	13.7	10.9
Ocoee	47,295	35,579	24,391	63	70	77	32.9	45.9
Winter Garden	46,964	34,568	14,351	64	76	111	35.9	140.9
Altamonte Springs	46,231	41,496	41,200	65	62	48	11.4	0.7
Cutler Bay	45,425	40,286	(X)	66	65	(X)	12.8	(X)
North Lauderdale	44,794	41,023	32,264	67	64	63	9.2	27.1
Oakland Park	44,229	41,363	30,966	68	63	66	6.9	33.6
Greenacres	43,990	37,573	27,569	69	67	71	17.1	36.3
North Miami Beach	43,676	41,523	40,786	70	61	49	5.2	1.8
Ormond Beach	43,080	38,137	36,301	71	66	56	13.0	5.1
Clermont	43,021	28,742	9,338	72	85	156	49.7	207.8
Lake Worth Beach	42,219	34,910	35,133	73	74	58	20.9	-0.6
Hallandale Beach	41,217	37,113	34,282	74	68	60	11.1	8.3
Aventura	40,242	35,762	25,267	75	69	76	12.5	41.5
Oviedo	40,059	33,342	26,316	76	79	74	20.1	26.7
Plant City	39,764	34,721	29,760	77	75	69	14.5	16.7
Royal Palm Beach	38,932	34,140	21,523	78	77	81	14.0	58.6
Winter Springs	38,342	33,282	30,860	79	80	67	15.2	7.8
Riviera Beach	37,604	32,488	29,884	80	82	68	15.7	8.7
DeLand	37,351	27,031	20,904	81	88	86	38.2	29.3
Estero	36,939	(X)	(X)	82	(X)	(X)	(X)	(X)
Dunedin	36,068	35,321	35,691	83	72	57	2.1	-1.0
Lauderdale Lakes	35,954	32,593	31,705	84	81	65	10.3	2.8
Parkland	34,670	23,962	13,835	85	93	115	44.7	73.2
Cooper City	34,401	28,547	27,914	86	86	70	20.5	2.3
Panama City	32,939	35,505	36,417	87	71	55	-7.2	-2.5
Dania Beach	31,723	29,639	20,061	88	83	89	7.0	47.7
Miami Lakes	30,467	29,361	(X)	89	84	(X)	3.8	(X)
New Smyrna Beach	30,142	22,464	20,048	90	96	90	34.2	12.1
Winter Park	29,795	27,852	24,090	91	87	78	7.0	15.6
Casselberry	28,794	26,241	23,438	92	89	79	9.7	12.0
Rockledge	27,678	24,926	20,170	93	90	87	11.0	23.6
Crestview	27,134	20,978	14,766	94	100	109	29.3	42.1
Leesburg	27,000	20,117	15,956	95	105	101	34.2	26.1
Palm Springs	26,890	18,928	11,699	96	109	131	42.1	61.8
Temple Terrace	26,690	24,541	20,918	97	92	85	8.8	17.3
Haines City	26,669	20,560	13,174	98	104	120	29.7	56.1
Key West	26,444	24,649	25,478	99	91	75	7.3	-3.3
West Melbourne	25,924	18,355	9,824	100	112	149	41.2	86.8

(X) Not applicable.

Note: Data for 2000 and 2010 include census corrections.

**Table 11. Rank of the Top 100 Cities in Florida by Population Change, 2010 to 2020**

Rank	City	Change	Population		Rank	City	Change	Population	
			2020	2010				2020	2010
1	Jacksonville	127,827	949,611	821,784	51	Sanford	7,481	61,051	53,570
2	Orlando	69,273	307,573	238,300	52	Lake Worth Beach	7,309	42,219	34,910
3	Tampa	49,250	384,959	335,709	53	Ocala	7,276	63,591	56,315
4	Miami	42,733	442,241	399,508	54	Leesburg	6,883	27,000	20,117
5	Port St. Lucie	40,248	204,851	164,603	55	Plantation	6,795	91,750	84,955
6	Cape Coral	39,711	194,016	154,305	56	Oviedo	6,717	40,059	33,342
7	Doral	30,165	75,874	45,709	57	Port Orange	6,548	62,596	56,048
8	Fort Myers	24,097	86,395	62,298	58	Greenacres	6,417	43,990	37,573
9	St. Cloud	23,781	58,964	35,183	59	Delray Beach	6,324	66,846	60,522
10	Homestead	20,228	80,737	60,509	60	Crestview	6,156	27,134	20,978
11	Kissimmee	19,544	79,226	59,682	61	Davenport	6,155	9,043	2,888
12	North Port	17,436	74,793	57,357	62	Bradenton	6,152	55,698	49,546
13	Fort Lauderdale	17,239	182,760	165,521	63	Haines City	6,109	26,669	20,560
14	Pembroke Pines	17,159	171,178	154,019	64	Panama City Beach	6,076	18,094	12,018
15	West Palm Beach	17,072	117,415	100,343	65	Jupiter	5,891	61,047	55,156
16	Gainesville	16,609	141,085	124,476	66	Sweetwater	5,864	19,363	13,499
17	Palm Bay	16,570	119,760	103,190	67	Cooper City	5,854	34,401	28,547
18	Winter Haven	15,345	49,219	33,874	68	Fort Pierce	5,707	47,297	41,590
19	Lakeland	15,219	112,641	97,422	69	Margate	5,428	58,712	53,284
20	Tallahassee	14,793	196,169	181,376	70	Cutler Bay	5,139	45,425	40,286
21	Clermont	14,279	43,021	28,742	71	Wellington	5,129	61,637	56,508
22	Palm Coast	14,078	89,258	75,180	72	Riviera Beach	5,116	37,604	32,488
23	Davie	13,699	105,691	91,992	73	Winter Springs	5,060	38,342	33,282
24	St. Petersburg	13,539	258,308	244,769	74	Tavares	5,052	19,003	13,951
25	Apopka	13,331	54,873	41,542	75	Plant City	5,043	39,764	34,721
26	Coral Springs	13,298	134,394	121,096	76	Titusville	5,028	48,789	43,761
27	Boca Raton	13,030	97,422	84,392	77	Ormond Beach	4,943	43,080	38,137
28	Sunrise	12,896	97,335	84,439	78	Coconut Creek	4,924	57,833	52,909
29	Miramar	12,680	134,721	122,041	79	Largo	4,837	82,485	77,648
30	Winter Garden	12,396	46,964	34,568	80	Royal Palm Beach	4,792	38,932	34,140
31	Hollywood	12,299	153,067	140,768	81	Altamonte Springs	4,735	46,231	41,496
32	Pompano Beach	12,201	112,046	99,845	82	Venice	4,715	25,463	20,748
33	Boynton Beach	12,163	80,380	68,217	83	Eustis	4,631	23,189	18,558
34	Deerfield Beach	11,841	86,859	75,018	84	Aventura	4,480	40,242	35,762
35	Ocoee	11,716	47,295	35,579	85	Miami Gardens	4,474	111,640	107,166
36	Tamarac	11,470	71,897	60,427	86	Minneola	4,440	13,843	9,403
37	Palm Beach Gardens	10,742	59,182	48,440	87	Fruitland Park	4,247	8,325	4,078
38	Parkland	10,708	34,670	23,962	88	Hallandale Beach	4,104	41,217	37,113
39	Daytona Beach	10,483	71,488	61,005	89	Freeport	4,074	5,861	1,787
40	DeLand	10,320	37,351	27,031	90	Pinellas Park	4,014	53,093	49,079
41	Bonita Springs	9,787	53,644	43,857	91	Mount Dora	3,971	16,341	12,370
42	Groveland	9,776	18,505	8,729	92	Zephyrhills	3,906	17,194	13,288
43	Clearwater	9,607	117,292	107,685	93	Maitland	3,792	19,543	15,751
44	Wildwood	9,021	15,730	6,709	94	North Lauderdale	3,771	44,794	41,023
45	Deltona	8,510	93,692	85,182	95	Lauderdale Lakes	3,361	35,954	32,593
46	Melbourne	8,473	84,678	76,205	96	Sebastian	3,125	25,054	21,929
47	Palm Springs	7,962	26,890	18,928	97	Niceville	3,023	15,772	12,749
48	New Smyrna Beach	7,678	30,142	22,464	98	Lake Mary	2,976	16,798	13,822
49	Lauderhill	7,595	74,482	66,887	99	DeBary	2,940	22,260	19,320
50	West Melbourne	7,569	25,924	18,355	100	Sarasota	2,925	54,842	51,917

Note: Data for 2010 include census corrections.



**Table 12. Rank of the Top 100 Cities in Florida by Percent Change in Population, 2010 to 2020**

Rank	City	Percent Change	Population		Rank	City	Percent Change	Population	
			2020	2010				2020	2010
1	Freeport	228.0	5,861	1,787	51	Cape Coral	25.7	194,016	154,305
2	Davenport	213.1	9,043	2,888	52	Eustis	25.0	23,189	18,558
3	Lake Buena Vista	140.0	24	10	53	Lake Hamilton	24.9	1,537	1,231
4	Wildwood	134.5	15,730	6,709	54	Port St. Lucie	24.5	204,851	164,603
5	Groveland	112.0	18,505	8,729	55	Orchid	24.3	516	415
6	Fruitland Park	104.1	8,325	4,078	56	Maitland	24.1	19,543	15,751
7	St. Leo	76.3	2,362	1,340	57	Niceville	23.7	15,772	12,749
8	Polk City	73.7	2,713	1,562	58	Bal Harbour	23.1	3,093	2,513
9	St. Cloud	67.6	58,964	35,183	59	Windermere	23.1	3,030	2,462
10	Doral	66.0	75,874	45,709	60	Venice	22.7	25,463	20,748
11	Fanning Springs	54.7	1,182	764	61	Bunnell	22.4	3,276	2,676
12	Panama City Beach	50.6	18,094	12,018	62	Bonita Springs	22.3	53,644	43,857
13	Clermont	49.7	43,021	28,742	63	Palm Beach Gardens	22.2	59,182	48,440
14	Howey-in-the-Hills	49.6	1,643	1,098	64	Daytona Beach Shores	21.9	5,179	4,247
15	Newberry	48.3	7,342	4,950	65	Lake Mary	21.5	16,798	13,822
16	Minneola	47.2	13,843	9,403	66	Juno Beach	21.5	3,858	3,176
17	Winter Haven	45.3	49,219	33,874	67	Gulf Stream	21.4	954	786
18	Parkland	44.7	34,670	23,962	68	Highland Beach	21.4	4,295	3,539
19	Sweetwater	43.4	19,363	13,499	69	West Miami	21.3	7,233	5,965
20	Palm Springs	42.1	26,890	18,928	70	Lake Worth Beach	20.9	42,219	34,910
21	Green Cove Springs	41.7	9,786	6,908	71	Cooper City	20.5	34,401	28,547
22	West Melbourne	41.2	25,924	18,355	72	Bellevue	20.5	5,413	4,492
23	Dundee	40.8	5,235	3,717	73	Oviedo	20.1	40,059	33,342
24	Beverly Beach	40.2	474	338	74	Key Biscayne	20.0	14,809	12,344
25	Fort Myers	38.7	86,395	62,298	75	Cinco Bayou	19.3	457	383
26	Oakland	38.5	3,516	2,538	76	Orange City	19.2	12,632	10,599
27	DeLand	38.2	37,351	27,031	77	Tamarac	19.0	71,897	60,427
28	Lazy Lake	37.5	33	24	78	Palm Coast	18.7	89,258	75,180
29	Tavares	36.2	19,003	13,951	79	Boynton Beach	17.8	80,380	68,217
30	Callahan	35.9	1,526	1,123	80	Midway	17.7	3,537	3,004
31	Winter Garden	35.9	46,964	34,568	81	Belle Isle	17.4	7,032	5,988
32	Leesburg	34.2	27,000	20,117	82	Daytona Beach	17.2	71,488	61,005
33	New Smyrna Beach	34.2	30,142	22,464	83	Yankeetown	17.1	588	502
34	Homestead	33.4	80,737	60,509	84	Grant-Valkaria	17.1	4,509	3,850
35	Eagle Lake	33.4	3,008	2,255	85	Greenacres	17.1	43,990	37,573
36	Palm Shores	33.3	1,200	900	86	West Palm Beach	17.0	117,415	100,343
37	Weeki Wachee	33.3	16	12	87	Punta Gorda	17.0	19,471	16,641
37	Ocoee	32.9	47,295	35,579	88	Marathon	16.8	9,689	8,297
39	Kissimmee	32.7	79,226	59,682	89	Haverhill	16.8	2,187	1,873
40	Mount Dora	32.1	16,341	12,370	90	Alachua	16.7	10,574	9,059
41	Apopka	32.1	54,873	41,542	91	Palm Beach Shores	16.5	1,330	1,142
42	North Port	30.4	74,793	57,357	92	Florida City	16.4	13,085	11,245
43	Haines City	29.7	26,669	20,560	93	High Springs	16.2	6,215	5,350
44	Mascotte	29.6	6,609	5,101	94	Islamorada, Village of Islands	16.1	7,107	6,119
45	Zephyrhills	29.4	17,194	13,288	95	Palm Bay	16.1	119,760	103,190
46	Crestview	29.3	27,134	20,978	96	Deerfield Beach	15.8	86,859	75,018
47	Orlando	29.1	307,573	238,300	97	Riviera Beach	15.7	37,604	32,488
48	Lake Alfred	27.1	6,374	5,015	98	Lakeland	15.6	112,641	97,422
49	Medley	26.0	1,056	838	99	Auburndale	15.6	15,616	13,507
50	Bushnell	26.0	3,047	2,418	100	Jacksonville	15.6	949,611	821,784

Note: Data for 2010 include census corrections.

**Table 13. Population by Race and Hispanic Origin by County, 2020**

State and County	Total Population	Percent of Total Population				
		White	Black	Asian	Other	Hispanic
FLORIDA	21,538,187	51.5	14.5	2.9	4.6	26.5
Alachua	278,468	57.6	18.4	6.4	5.5	12.1
Baker	28,259	78.5	13.5	0.6	4.0	3.4
Bay	175,216	73.3	10.0	2.3	6.5	7.9
Bradford	28,303	71.8	19.2	0.5	3.8	4.8
Brevard	606,612	71.0	9.3	2.6	5.9	11.2
Broward	1,944,375	33.1	26.6	3.8	5.1	31.3
Calhoun	13,648	76.9	12.2	0.3	6.0	4.6
Charlotte	186,847	82.3	4.7	1.4	4.1	7.5
Citrus	153,843	85.5	2.5	1.6	4.4	6.0
Clay	218,245	68.3	11.7	3.0	6.4	10.6
Collier	375,752	62.7	6.0	1.4	2.7	27.2
Columbia	69,698	70.4	16.4	1.2	4.6	7.3
DeSoto	33,976	54.8	12.4	0.6	2.8	29.5
Dixie	16,759	82.0	9.3	0.3	4.2	4.1
Duval	995,567	49.4	28.8	4.9	5.6	11.3
Escambia	321,905	62.4	21.2	3.1	6.9	6.5
Flagler	115,378	73.1	9.1	2.1	5.0	10.7
Franklin	12,451	78.7	11.3	0.2	4.4	5.4
Gadsden	43,826	32.2	53.2	0.3	2.7	11.6
Gilchrist	17,864	83.0	4.4	0.3	4.7	7.5
Glades	12,126	58.8	11.8	0.3	3.9	25.2
Gulf	14,192	79.1	11.9	0.4	4.7	3.9
Hamilton	14,004	54.5	31.6	0.3	3.2	10.4
Hardee	25,327	46.9	8.3	0.7	2.3	41.9
Hendry	39,619	30.5	10.6	0.9	2.2	55.8
Hernando	194,515	74.1	4.9	1.3	4.8	14.9
Highlands	101,235	64.7	9.4	1.6	3.6	20.7
Hillsborough	1,459,762	45.7	15.4	4.8	4.8	29.3
Holmes	19,653	85.3	6.2	0.4	4.6	3.5
Indian River	159,788	73.5	8.2	1.5	3.8	13.0
Jackson	47,319	64.7	25.4	0.6	4.5	4.7
Jefferson	14,510	60.1	31.7	0.2	3.4	4.5
Lafayette	8,226	73.8	12.4	0.1	2.2	11.4
Lake	383,956	65.9	9.9	2.2	5.0	17.0
Lee	760,822	64.5	7.4	1.7	3.7	22.8



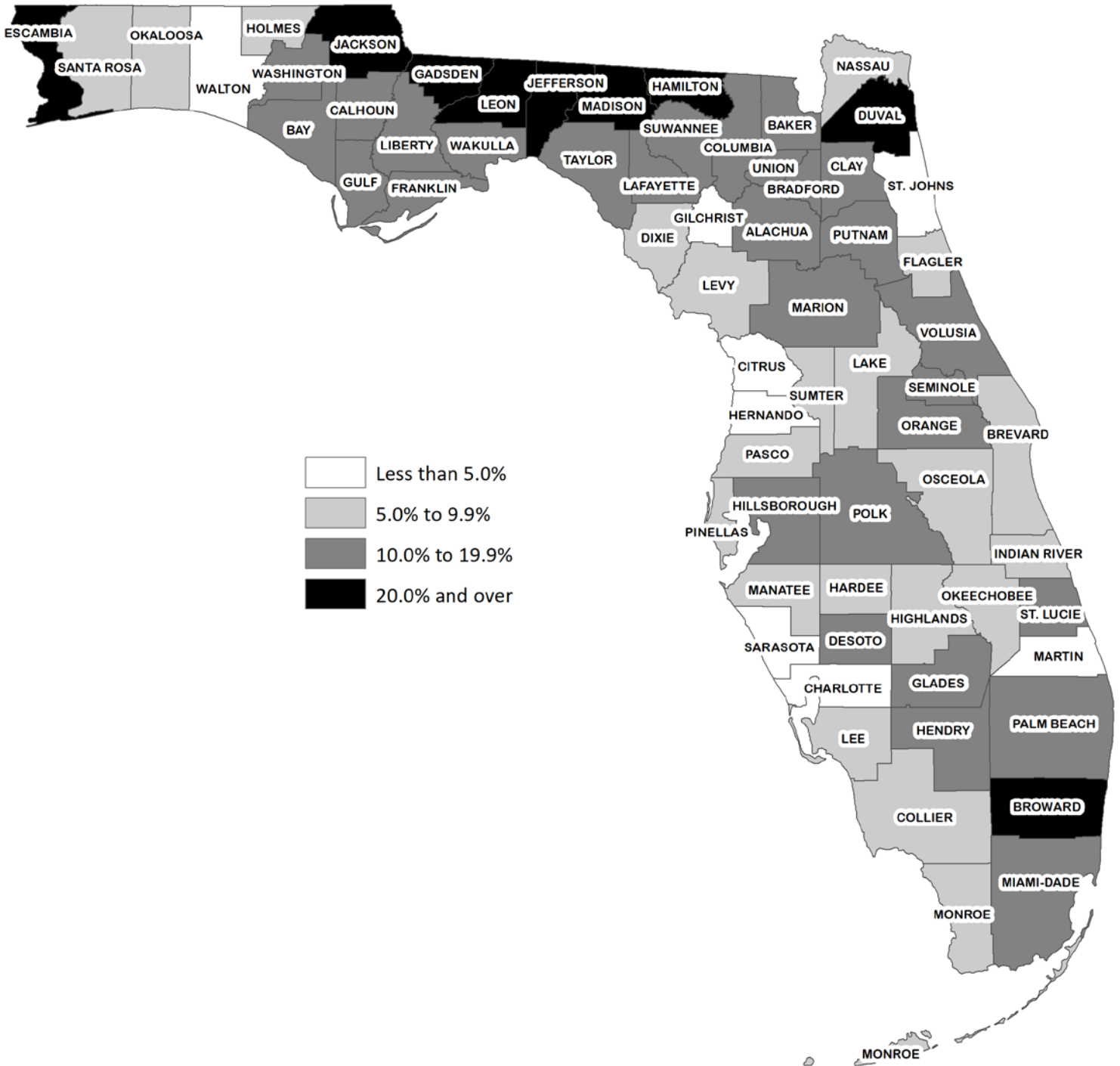
**Table 13. Population by Race and Hispanic Origin by County, 2020**

(Continued)

State and County	Total Population	Percent of Total Population					Hispanic
		Non-Hispanic					
		White	Black	Asian	Other		
Leon	292,198	53.9	29.9	3.6	4.7	7.8	
Levy	42,915	76.6	8.4	0.7	4.8	9.5	
Liberty	7,974	71.8	17.0	0.2	3.9	7.0	
Madison	17,968	56.4	35.0	0.3	3.5	4.9	
Manatee	399,710	68.3	7.8	2.1	4.0	17.8	
Marion	375,908	67.5	11.4	1.6	4.6	14.9	
Martin	158,431	75.2	4.6	1.4	3.5	15.3	
Miami-Dade	2,701,767	13.4	14.0	1.5	2.3	68.7	
Monroe	82,874	66.0	5.5	1.4	3.7	23.4	
Nassau	90,352	83.9	5.5	1.0	4.7	4.9	
Okaloosa	211,668	69.1	8.9	3.1	8.2	10.7	
Okeechobee	39,644	62.2	8.4	0.8	3.7	24.9	
Orange	1,429,908	37.2	18.4	5.4	5.9	33.1	
Osceola	388,656	29.2	9.0	2.9	4.6	54.3	
Palm Beach	1,492,191	52.3	17.1	2.9	4.3	23.5	
Pasco	561,891	69.8	5.6	2.9	5.0	16.6	
Pinellas	959,107	71.4	9.5	3.5	4.9	10.7	
Polk	725,046	54.2	13.9	1.8	4.2	25.9	
Putnam	73,321	68.9	15.4	0.6	4.4	10.7	
St. Johns	273,425	78.4	4.7	3.6	5.0	8.3	
St. Lucie	329,226	53.6	19.6	1.7	4.9	20.1	
Santa Rosa	188,000	78.5	5.7	2.0	7.5	6.3	
Sarasota	434,006	80.6	3.7	1.9	3.8	10.0	
Seminole	470,856	56.1	10.7	5.3	5.3	22.6	
Sumter	129,752	84.2	6.4	1.0	2.6	5.8	
Suwannee	43,474	72.8	11.3	0.6	4.2	11.0	
Taylor	21,796	71.7	19.3	1.0	4.0	4.0	
Union	16,147	71.7	19.8	0.2	3.5	4.7	
Volusia	553,543	68.6	10.0	1.9	4.6	14.9	
Wakulla	33,764	77.0	12.4	0.6	5.3	4.7	
Walton	75,305	80.5	4.4	1.2	5.7	8.2	
Washington	25,318	77.0	12.8	0.5	6.1	3.6	



Figure 4. Black Population as a Percent of Total Population, 2020



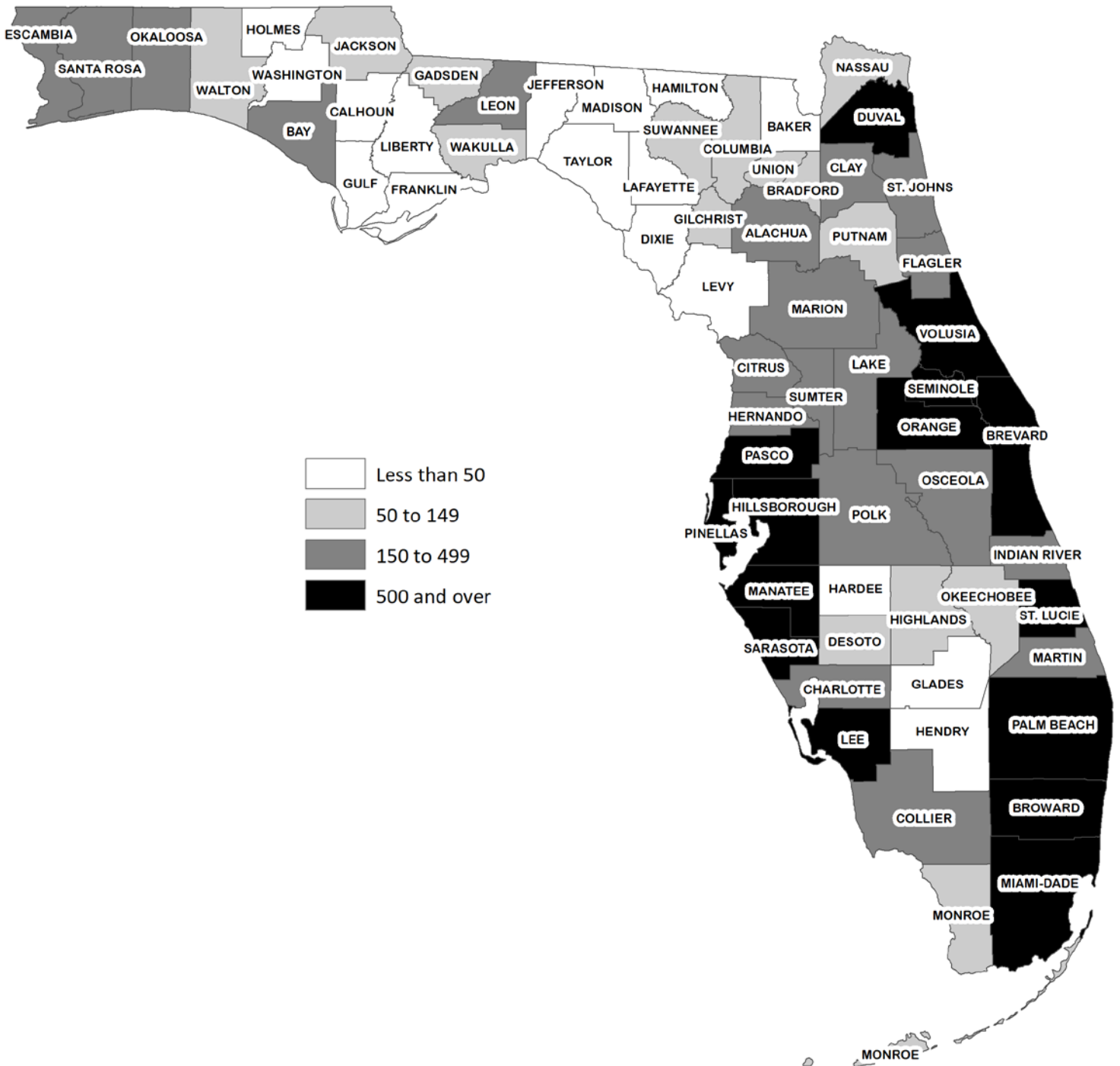
**Table 14. Population Per Square Mile for Florida Counties in  
2020, 2010, 2000, and 1990**

State and County	Land Area in 2020 (sq. miles)	Population Per Square Mile				Rank			
		2020	2010	2000	1990	2020	2010	2000	1990
Florida	53,652	401	351	298	241	(X)	(X)	(X)	(X)
Pinellas	274	3,504	3,345	3,363	3,108	1	1	1	1
Broward	1,203	1,617	1,445	1,341	1,044	2	2	2	2
Orange	902	1,585	1,269	993	751	3	5	6	7
Seminole	309	1,522	1,368	1,182	930	4	3	4	4
Hillsborough	1,022	1,428	1,205	979	816	5	6	7	6
Miami-Dade	1,900	1,422	1,315	1,187	1,020	6	4	3	3
Duval	763	1,305	1,134	1,022	882	7	7	5	5
Lee	781	974	788	562	429	8	8	10	10
Sarasota	556	781	682	586	500	9	9	8	8
Palm Beach	1,964	760	670	574	440	10	10	9	9
Pasco	747	753	622	462	376	11	11	12	13
Brevard	1,015	598	535	469	393	12	12	11	12
St. Lucie	572	576	486	337	263	13	13	17	17
Manatee	743	538	434	355	285	14	16	16	16
Volusia	1,101	503	449	403	337	15	15	14	14
Escambia	657	490	454	449	400	16	14	13	11
St. Johns	601	455	316	205	139	17	20	26	29
Leon	668	437	413	359	288	18	17	15	15
Hernando	473	411	365	277	214	19	18	18	19
Lake	952	404	317	224	160	20	22	24	27
Polk	1,798	403	335	269	225	21	19	19	18
Clay	605	361	316	233	175	22	21	22	23
Alachua	876	318	283	249	207	23	23	20	20
Indian River	503	318	274	225	179	24	24	23	22
Osceola	1,328	293	202	130	81	25	30	31	32
Martin	544	291	269	233	185	26	25	21	21
Charlotte	681	274	235	208	163	27	27	25	25
Citrus	582	264	243	203	161	28	26	27	26
Flagler	486	237	197	103	59	29	31	34	40
Marion	1,588	237	209	163	123	30	29	30	30
Sumter	557	233	171	98	57	31	33	36	41
Bay	759	231	223	196	167	32	28	28	24
Okaloosa	930	228	194	183	155	33	32	29	28
Collier	1,997	188	161	126	76	34	34	32	37
Santa Rosa	1,012	186	150	116	81	35	35	33	33

**Table 14. Population Per Square Mile for Florida Counties in  
2020, 2010, 2000, and 1990 (Continued)**

State and County	Land Area in 2020 (sq. miles)	Population Per Square Mile				Rank			
		2020	2010	2000	1990	2020	2010	2000	1990
Nassau	649	139	113	89	68	36	36	37	38
Putnam	728	101	102	97	89	37	37	35	31
Highlands	1,018	99	97	86	67	38	38	40	39
Bradford	294	96	97	89	77	39	39	38	36
Columbia	798	87	85	71	53	40	41	42	42
Gadsden	516	85	90	87	80	41	40	39	34
Monroe	983	84	74	81	79	42	42	41	35
Walton	1,038	73	53	39	27	43	47	50	53
Union	244	66	64	55	42	44	43	43	44
Suwannee	689	63	60	51	39	45	44	45	45
Wakulla	606	56	51	38	23	46	49	53	55
DeSoto	637	53	55	51	37	47	45	46	47
Okeechobee	769	52	52	47	39	48	48	47	46
Jackson	918	52	54	51	45	49	46	44	43
Gilchrist	350	51	48	41	28	50	50	49	52
Baker	585	48	46	38	32	51	51	52	49
Washington	585	43	43	36	29	52	53	54	51
Holmes	479	41	42	39	33	53	54	51	48
Hardee	638	40	43	42	31	54	52	48	50
Levy	1,118	38	36	31	23	55	55	56	56
Hendry	1,156	34	34	31	22	56	56	55	57
Hamilton	514	27	29	26	21	57	57	59	58
Madison	697	26	28	27	24	58	59	57	54
Gulf	553	26	28	26	21	59	58	58	59
Jefferson	598	24	25	22	19	60	61	61	61
Calhoun	567	24	26	23	19	61	60	60	60
Dixie	705	24	23	20	15	62	62	62	64
Franklin	545	23	22	18	16	63	64	64	62
Taylor	1,043	21	22	18	16	64	63	63	63
Lafayette	543	15	16	13	10	65	65	66	65
Glades	807	15	16	13	9	66	66	65	66
Liberty	836	10	10	8	7	67	67	67	67

Figure 5. Population Per Square Mile, 2020



## Appendix: Location of Florida Cities

City	County	City	County
Alachua	Alachua	Bunnell	Flagler
Alford	Jackson	Bushnell	Sumter
Altamonte Springs	Seminole	Callahan	Nassau
Altha	Calhoun	Callaway	Bay
Anna Maria	Manatee	Campbellton	Jackson
Apalachicola	Franklin	Cape Canaveral	Brevard
Apopka	Orange	Cape Coral	Lee
Arcadia	DeSoto	Carrabelle	Franklin
Archer	Alachua	Caryville	Washington
Astatula	Lake	Casselberry	Seminole
Atlantic Beach	Duval	Cedar Key	Levy
Atlantis	Palm Beach	Center Hill	Sumter
Auburndale	Polk	Century	Escambia
Aventura	Miami-Dade	Chattahoochee	Gadsden
Avon Park	Highlands	Chiefland	Levy
Bal Harbour	Miami-Dade	ChIPLEY	Washington
Baldwin	Duval	Cinco Bayou	Okaloosa
Bartow	Polk	Clearwater	Pinellas
Bascom	Jackson	Clermont	Lake
Bay Harbor Islands	Miami-Dade	Clewiston	Hendry
Bay Lake	Orange	Cloud Lake	Palm Beach
Bell	Gilchrist	Cocoa	Brevard
Belle Glade	Palm Beach	Cocoa Beach	Brevard
Belle Isle	Orange	Coconut Creek	Broward
Belleair	Pinellas	Coleman	Sumter
Belleair Beach	Pinellas	Cooper City	Broward
Belleair Bluffs	Pinellas	Coral Gables	Miami-Dade
Belleair Shore	Pinellas	Coral Springs	Broward
Belleview	Marion	Cottondale	Jackson
Beverly Beach	Flagler	Crescent City	Putnam
Biscayne Park	Miami-Dade	Crestview	Okaloosa
Blountstown	Calhoun	Cross City	Dixie
Boca Raton	Palm Beach	Crystal River	Citrus
Bonifay	Holmes	Cutler Bay	Miami-Dade
Bonita Springs	Lee	Dade City	Pasco
Bowling Green	Hardee	Dania Beach	Broward
Boynton Beach	Palm Beach	Davenport	Polk
Bradenton	Manatee	Davie	Broward
Bradenton Beach	Manatee	Daytona Beach	Volusia
Branford	Suwannee	Daytona Beach Shores	Volusia
Briny Breezes	Palm Beach	DeBary	Volusia
Bristol	Liberty	Deerfield Beach	Broward
Bronson	Levy	DeFuniak Springs	Walton
Brooker	Bradford	DeLand	Volusia
Brooksville	Hernando	Delray Beach	Palm Beach

## Appendix: Location of Florida Cities

(Continued)

City	County	City	County
Deltona	Volusia	Groveland	Lake
Destin	Okaloosa	Gulf Breeze	Santa Rosa
Doral	Miami-Dade	Gulf Stream	Palm Beach
Dundee	Polk	Gulfport	Pinellas
Dunedin	Pinellas	Haines City	Polk
Dunnellon	Marion	Hallandale Beach	Broward
Eagle Lake	Polk	Hampton	Bradford
Eatonville	Orange	Hastings**	St. Johns
Ebro	Washington	Havana	Gadsden
Edgewater	Volusia	Haverhill	Palm Beach
Edgewood	Orange	Hawthorne	Alachua
El Portal	Miami-Dade	Hialeah	Miami-Dade
Estero*	Lee	Hialeah Gardens	Miami-Dade
Esto	Holmes	High Springs	Alachua
Eustis	Lake	Highland Beach	Palm Beach
Everglades	Collier	Highland Park	Polk
Fanning Springs	Gilchrist/Levy	Hillcrest Heights	Polk
Fellsmere	Indian River	Hilliard	Nassau
Fernandina Beach	Nassau	Hillsboro Beach	Broward
Flagler Beach	Flagler/Volusia	Holly Hill	Volusia
Florida City	Miami-Dade	Hollywood	Broward
Fort Lauderdale	Broward	Holmes Beach	Manatee
Fort Meade	Polk	Homestead	Miami-Dade
Fort Myers	Lee	Horseshoe Beach	Dixie
Fort Myers Beach	Lee	Howey-in-the-Hills	Lake
Fort Pierce	St. Lucie	Hypoluxo	Palm Beach
Fort Walton Beach	Okaloosa	Indialantic	Brevard
Fort White	Columbia	Indian Creek	Miami-Dade
Freeport	Walton	Indian Harbour Beach	Brevard
Frostproof	Polk	Indian River Shores	Indian River
Fruitland Park	Lake	Indian Rocks Beach	Pinellas
Gainesville	Alachua	Indian Shores	Pinellas
Glen Ridge	Palm Beach	Indiantown***	Martin
Glen St. Mary	Baker	Inglis	Levy
Golden Beach	Miami-Dade	Interlachen	Putnam
Golf	Palm Beach	Inverness	Citrus
Graceville	Jackson	Islamorada, Village of Islands	Monroe
Grand Ridge	Jackson	Islandia****	Miami-Dade
Grant-Valkaria	Brevard	Jacksonville	Duval
Green Cove Springs	Clay	Jacksonville Beach	Duval
Greenacres	Palm Beach	Jacob City	Jackson
Greensboro	Gadsden	Jasper	Hamilton
Greenville	Madison	Jay	Santa Rosa
Greenwood	Jackson	Jennings	Hamilton
Gretna	Gadsden	Juno Beach	Palm Beach



## Appendix: Location of Florida Cities

(Continued)

City	County	City	County
Jupiter	Palm Beach	Maitland	Orange
Jupiter Inlet Colony	Palm Beach	Malabar	Brevard
Jupiter Island	Martin	Malone	Jackson
Kenneth City	Pinellas	Manalapan	Palm Beach
Key Biscayne	Miami-Dade	Mangonia Park	Palm Beach
Key Colony Beach	Monroe	Marathon	Monroe
Key West	Monroe	Marco Island	Collier
Keystone Heights	Clay	Margate	Broward
Kissimmee	Osceola	Marianna	Jackson
La Crosse	Alachua	Marineland	Flagler/St. Johns
LaBelle	Hendry	Mary Esther	Okaloosa
Lady Lake	Lake	Mascotte	Lake
Lake Alfred	Polk	Mayo	Lafayette
Lake Buena Vista	Orange	McIntosh	Marion
Lake Butler	Union	Medley	Miami-Dade
Lake City	Columbia	Melbourne	Brevard
Lake Clarke Shores	Palm Beach	Melbourne Beach	Brevard
Lake Hamilton	Polk	Melbourne Village	Brevard
Lake Helen	Volusia	Mexico Beach	Bay
Lakeland	Polk	Miami	Miami-Dade
Lake Mary	Seminole	Miami Beach	Miami-Dade
Lake Park	Palm Beach	Miami Gardens	Miami-Dade
Lake Placid	Highlands	Miami Lakes	Miami-Dade
Lake Wales	Polk	Miami Shores	Miami-Dade
Lake Worth Beach	Palm Beach	Miami Springs	Miami-Dade
Lantana	Palm Beach	Micanopy	Alachua
Largo	Pinellas	Midway	Gadsden
Lauderdale-By-The-Sea	Broward	Milton	Santa Rosa
Lauderdale Lakes	Broward	Minneola	Lake
Lauderhill	Broward	Miramar	Broward
Laurel Hill	Okaloosa	Monticello	Jefferson
Lawtey	Bradford	Montverde	Lake
Layton	Monroe	Moore Haven	Glades
Lazy Lake	Broward	Mount Dora	Lake
Lee	Madison	Mulberry	Polk
Leesburg	Lake	Naples	Collier
Lighthouse Point	Broward	Neptune Beach	Duval
Live Oak	Suwannee	New Port Richey	Pasco
Longboat Key	Manatee/Sarasota	New Smyrna Beach	Volusia
Longwood	Seminole	Newberry	Alachua
Loxahatchee Groves	Palm Beach	Niceville	Okaloosa
Lynn Haven	Bay	Noma	Holmes
Macclenny	Baker	North Bay Village	Miami-Dade
Madeira Beach	Pinellas	North Lauderdale	Broward
Madison	Madison	North Miami	Miami-Dade

## Appendix: Location of Florida Cities

(Continued)

City	County	City	County
North Miami Beach	Miami-Dade	Plant City	Hillsborough
North Palm Beach	Palm Beach	Plantation	Broward
North Port	Sarasota	Polk City	Polk
North Redington Beach	Pinellas	Pomona Park	Putnam
Oak Hill	Volusia	Pompano Beach	Broward
Oakland	Orange	Ponce de Leon	Holmes
Oakland Park	Broward	Ponce Inlet	Volusia
Ocala	Marion	Port Orange	Volusia
Ocean Breeze	Martin	Port Richey	Pasco
Ocean Ridge	Palm Beach	Port St. Joe	Gulf
Ocoee	Orange	Port St. Lucie	St. Lucie
Okeechobee	Okeechobee	Punta Gorda	Charlotte
Oldsmar	Pinellas	Quincy	Gadsden
Opa-locka	Miami-Dade	Raiford	Union
Orange City	Volusia	Reddick	Marion
Orange Park	Clay	Redington Beach	Pinellas
Orchid	Indian River	Redington Shores	Pinellas
Orlando	Orange	Riviera Beach	Palm Beach
Ormond Beach	Volusia	Rockledge	Brevard
Otter Creek	Levy	Royal Palm Beach	Palm Beach
Oviedo	Seminole	Safety Harbor	Pinellas
Pahokee	Palm Beach	St. Augustine	St. Johns
Palatka	Putnam	St. Augustine Beach	St. Johns
Palm Bay	Brevard	St. Cloud	Osceola
Palm Beach	Palm Beach	St. Leo	Pasco
Palm Beach Gardens	Palm Beach	St. Lucie Village	St. Lucie
Palm Beach Shores	Palm Beach	St. Marks	Wakulla
Palm Coast	Flagler	St. Pete Beach	Pinellas
Palm Shores	Brevard	St. Petersburg	Pinellas
Palm Springs	Palm Beach	San Antonio	Pasco
Palmetto	Manatee	Sanford	Seminole
Palmetto Bay	Miami-Dade	Sanibel	Lee
Panama City	Bay	Sarasota	Sarasota
Panama City Beach	Bay	Satellite Beach	Brevard
Parker	Bay	Sea Ranch Lakes	Broward
Parkland	Broward	Sebastian	Indian River
Paxton	Walton	Sebring	Highlands
Pembroke Park	Broward	Seminole	Pinellas
Pembroke Pines	Broward	Sewall's Point	Martin
Penney Farms	Clay	Shalimar	Okaloosa
Pensacola	Escambia	Sneads	Jackson
Perry	Taylor	Sopchoppy	Wakulla
Pierson	Volusia	South Bay	Palm Beach
Pinecrest	Miami-Dade	South Daytona	Volusia
Pinellas Park	Pinellas	South Miami	Miami-Dade

## Appendix: Location of Florida Cities

(Continued)

City	County	City	County
South Palm Beach	Palm Beach	Weeki Wachee*****	Hernando
South Pasadena	Pinellas	Welaka	Putnam
Southwest Ranches	Broward	Wellington	Palm Beach
Springfield	Bay	Westlake*****	Palm Beach
Starke	Bradford	West Melbourne	Brevard
Stuart	Martin	West Miami	Miami-Dade
Sunny Isles Beach	Miami-Dade	West Palm Beach	Palm Beach
Sunrise	Broward	Weston	Broward
Surfside	Miami-Dade	West Park	Broward
Sweetwater	Miami-Dade	Westville	Holmes
Tallahassee	Leon	Wewahitchka	Gulf
Tamarac	Broward	White Springs	Hamilton
Tampa	Hillsborough	Wildwood	Sumter
Tarpon Springs	Pinellas	Williston	Levy
Tavares	Lake	Wilton Manors	Broward
Temple Terrace	Hillsborough	Windermere	Orange
Tequesta	Palm Beach	Winter Garden	Orange
Titusville	Brevard	Winter Haven	Polk
Treasure Island	Pinellas	Winter Park	Orange
Trenton	Gilchrist	Winter Springs	Seminole
Umatilla	Lake	Worthington Springs	Union
Valparaiso	Okaloosa	Yankeetown	Levy
Venice	Sarasota	Zephyrhills	Pasco
Vernon	Washington	Zolfo Springs	Hardee
Vero Beach	Indian River		
Virginia Gardens	Miami-Dade		
Waldo	Alachua		
Wauchula	Hardee		
Wausau	Washington		
Webster	Sumter		

**Notes:**

- \* The Village of Estero was incorporated on December 31, 2014.
- \*\* The City of Hastings was disincorporated on February 28, 2018.
- \*\*\* The Village of Indiantown was incorporated on December 31, 2017.
- \*\*\*\* The City of Islandia was disincorporated on March 6, 2012.
- \*\*\*\*\* The City of Weeki Wachee was disincorporated on June 9, 2020.
- \*\*\*\*\* The City of Westlake was incorporated on June 20, 2016.

**UF** | **Bureau of Economic and Business Research**  
*College of Liberal Arts and Sciences*  
UNIVERSITY of FLORIDA

Ayers Technological Plaza  
720 SW 2nd Ave, Suite 150  
P.O. Box 117148  
Gainesville, Florida 32611-7148  
phone: 352-392-0171  
[www.bebr.ufl.edu](http://www.bebr.ufl.edu)

**BEBR**